

# 3M

## 3800 Series

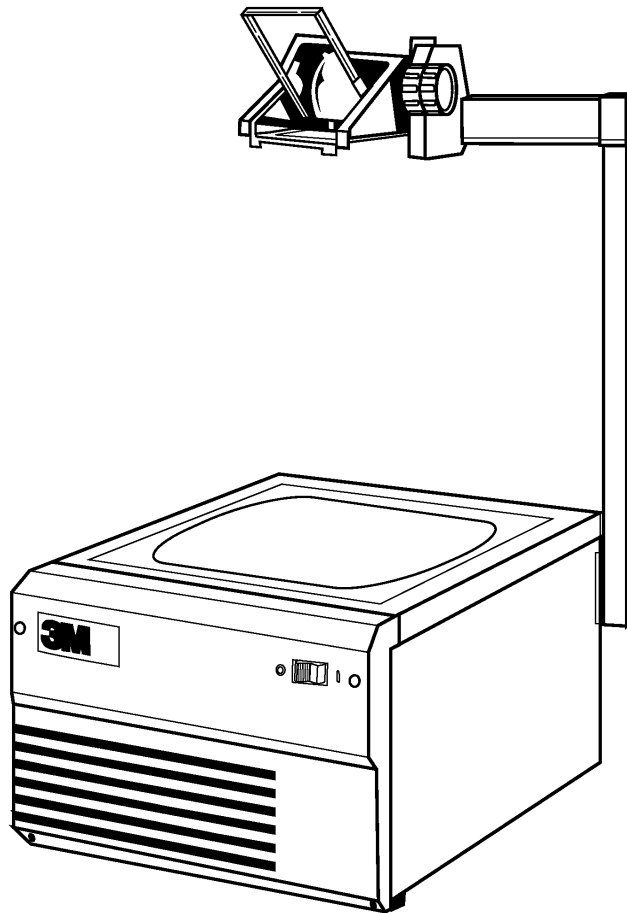
### Overhead Projector

**Discontinued Model**

- No technical support
- No replacement parts

# Illustrated Parts Breakdown

For: 3805 3808 3820



---

<b>Introduction</b> .....	<b>7-1</b>
<b>Part Numbers</b> .....	<b>7-1</b>
<b>Locating and Identifying a Part</b> .....	<b>7-1</b>
<b>Machine Identification Plate</b> .....	<b>7-1</b>
Section 0 OVERVIEW .....	7-3
Section 1 OPEN SINGLET HEAD ASSEMBLY .....	7-4
Section 2 CLAMSHELL HEAD ASSEMBLY .....	7-6
Section 3 ARM AND FOCUS ASSEMBLY .....	7-8
Section 4 TOP COVER ASSEMBLY .....	7-10
Section 5 BASE ASSEMBLY .....	7-12
Section 6 FRONT COVER ASSEMBLY .....	7-14
Section 7 LAMP HOUSING .....	7-16
Section 8 WIRE JUMPERS .....	7-18
Appendix A SPECIFICATIONS .....	7-21

**Introduction**

This Illustrated Parts Breakdown (IPB) contains the information necessary to locate and identify specific parts of the 3800 Series Overhead Projectors.

**Part Numbers**

All components available on a replacement basis are listed with their 3M identification number. The parts identification list opposite each illustration provides the description adequate to identify components.

**Locating and Identifying a Part**

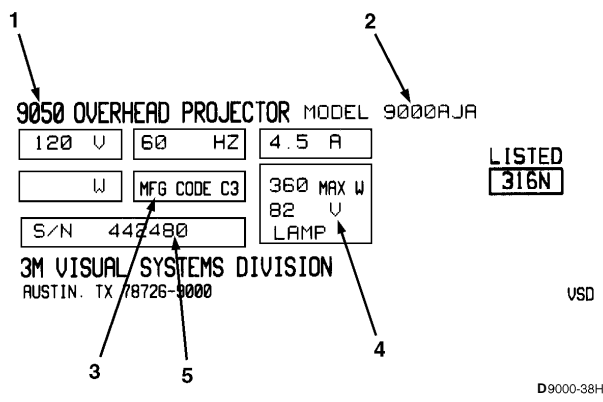
If physical appearance and general location of an item are known:

1. Use the Overview illustration to determine which section includes the item.
2. Refer to the section and locate the item on the exploded view illustration.

The part identification numbers provided in this manual are from the most current data available. Make sure part identification numbers for your component have not been amended by changes and updates made to your 3800 Series Overhead Projector.

**Machine Identification Plate**

The Machine Identification Plate is located on the bottom side of each projector and lists specific information that is needed when calling for technical assistance or ordering parts.



**Figure 7-1. Machine Identification Plate**

When ordering parts, include part identification number, description, quantity and the following information:

1. Product Name: The specific version number of the projector.
2. Model Number/Alpha Code: The series number of the projector followed by a three or four character alpha code identifier. The Alpha Code indicates the design level, specific product characteristics, power cord or distribution specific to a country.
3. MFG Code: The date the projector was manufactured. See example below:

MFG Code			
Letter		Digit	
C	1995	1	Jan – Mar
C	1995	2	Apr – Jun
D	1996	3	Jul – Sep
E	1997	4	Oct – Dec

4. Lamp: The electrical rating of the lamp.
5. S/N: The serial number assigned to this projector.

For part orders contact:

Dealers: Refer to Dealers Guide  
 3M Subsidiaries: Contact Export Operations

*This page intentionally left blank.*

---

**Table of Contents**

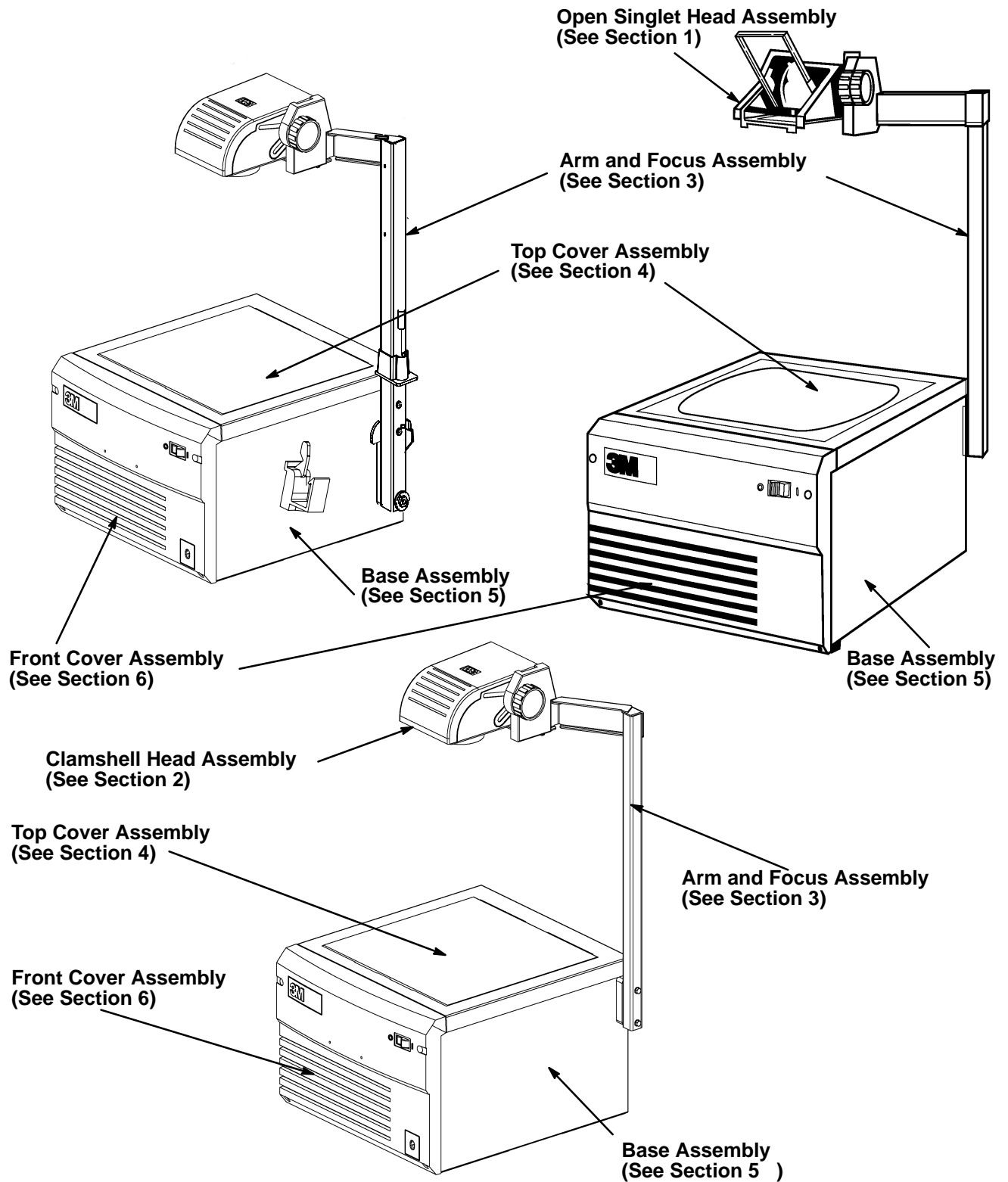
<b>Section No.</b>	<b>Title</b>	<b>Page</b>
0	Overview	3
1	Open Singlet Head Assembly	4
2	Clamshell Head Assembly	6
3	Arm and Focus Assembly	8
4	Top Cover Assembly	10
5	Base Assembly	12
6	Front Cover Assembly	14
7	Lamp Housing	16
8	Wire Jumpers	18
Appendix A	Specifications	21

**IMPORTANT NOTICE**

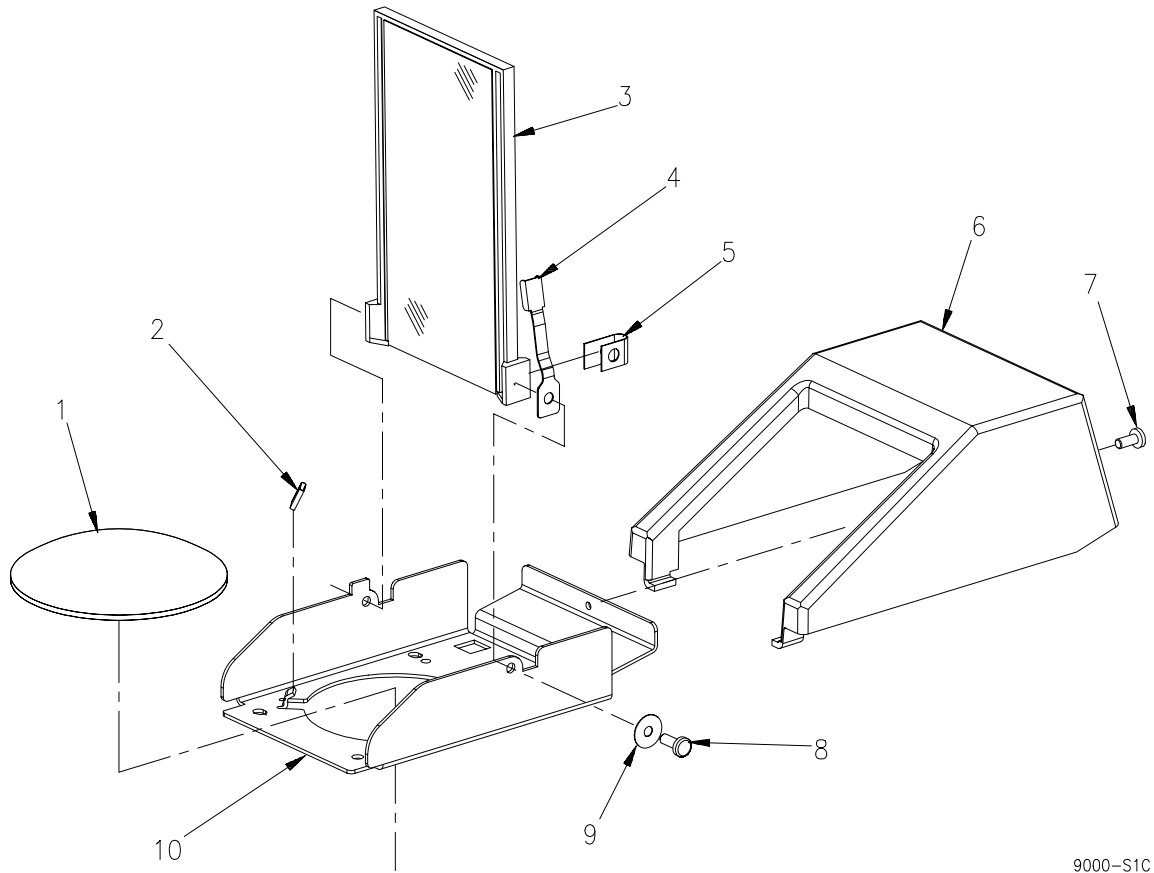
**3M reserves the right to sell or furnish NEW OR RECONDITIONED PARTS.  
New and reconditioned parts are covered by the same 3M new parts limited warranty.**

*This page intentionally left blank.*

Section 0  
OVERVIEW



**Section 1**  
**OPEN SINGLET HEAD ASSEMBLY**

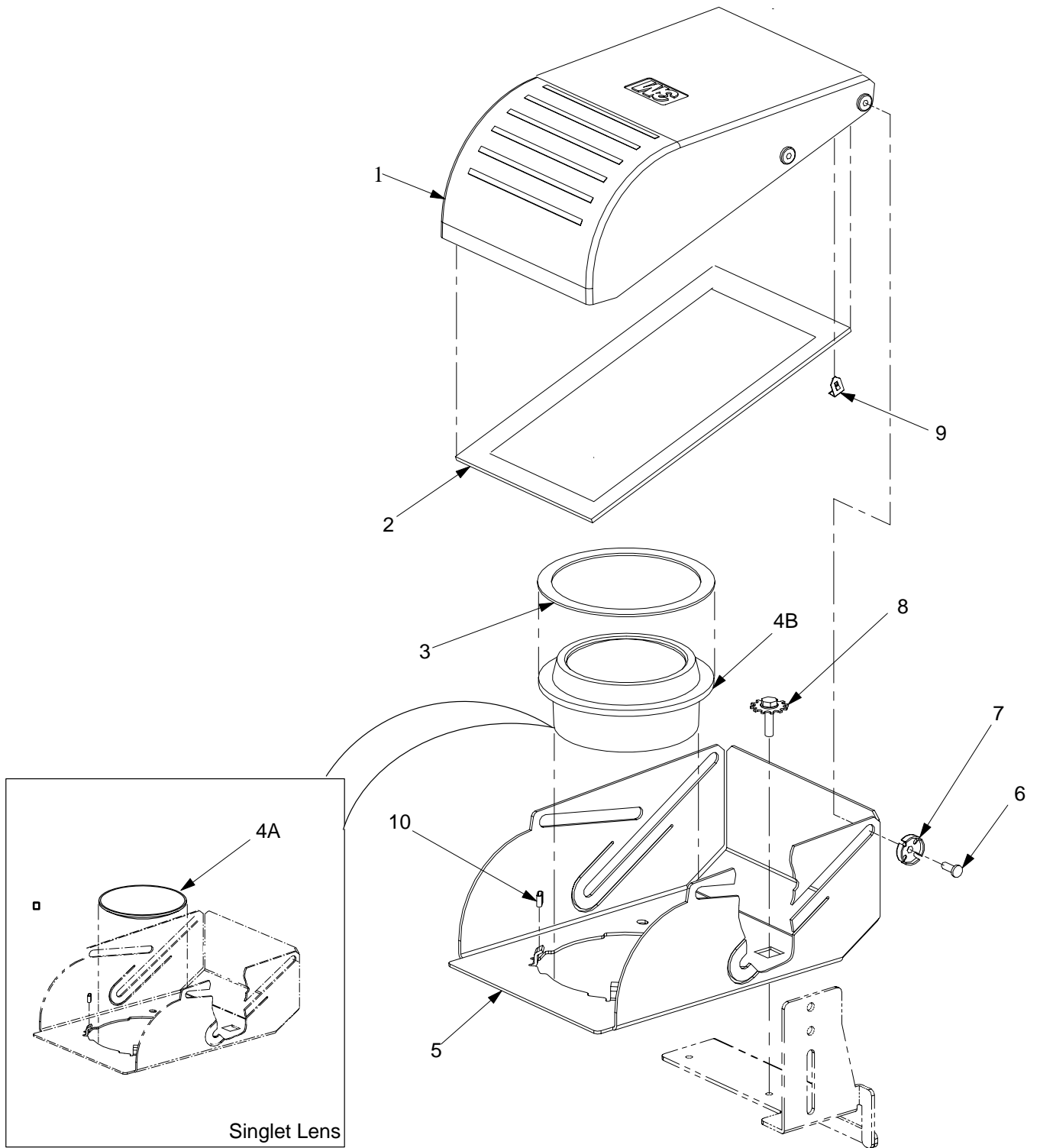


9000-S1C

**Section 1**  
**OPEN SINGLET HEAD ASSEMBLY**

Item No.	Part Number	Description	Qty
0	78-8079-9151-4	HEAD ASSEMBLY, Open Singlet (Complete)	1
1	78-8014-8951-5	LENS, Wide Angle (293mm)	1
2	78-8064-1646-3	TUBING, Lens	3
3	78-8096-5798-0	MIRROR ASSEMBLY, Open Singlet, Mirror	1
4	78-8064-1605-9	SPRING, Mirror Damping	1
5	78-8003-9762-8	NUT, U-Type, 8-32	1
6	78-8079-8802-3	COVER, Head, Singlet	1
7	26-1008-5592-8	SCREW, Taptite, M3.5 x 8	1
8	26-1005-9570-5	SCREW, Mach. 8-32 x 7/16	1
9	26-1004-0460-2	WASHER, Plain Nylon	1
10	78-8079-8803-1	BRACKET, Lens, Singlet	1

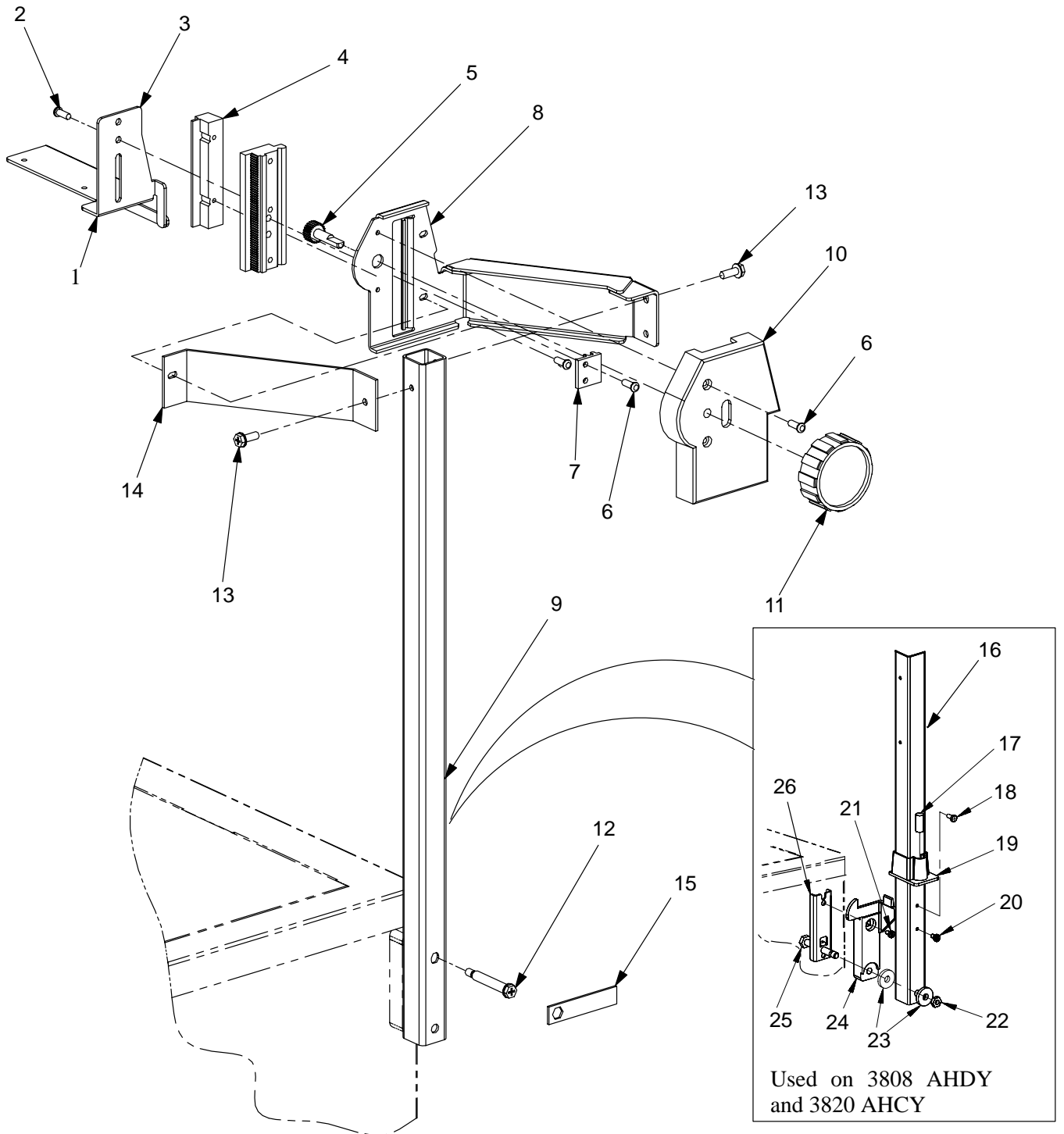
Section 2  
CLAMSHELL HEAD ASSEMBLY



**Section 2**  
**CLAMSHELL HEAD ASSEMBLY**

Item No.	Part Number	Description	Qty
!A	78-8096-5760-0	COVER, Head, Clamshell	1
1B	78-8096-5832-7	COVER, Head, Clamshell, (Used on China versions only)	1
2A	78-8096-5801-2	MIRROR ASSEMBLY, Clamshell Head, Singlet	1
2B	78-8096-5799-8	MIRROR ASSEMBLY, Clamshell Head, Triplet	1
3	78-8096-5790-7	RING, Adapter, Triplet Lens	1
4A	78-8014-8951-5	LENS, Singlet (293mm)	1
4B	78-8064-1833-7	LENS, Triplet (340mm)	1
5A	78-8096-5761-8	BRACKET, Head	1
5B	78-8096-5831-9	BRACKET, Head (Used on China versions only)	1
6	26-1007-5427-9	SCREW, Plastite, 6-19 X 3/8	2
7	78-8096-5802-0	BUSHING, Flange	2
8	26-1009-9749-8	SCREW, Taptite, Sems, M4 X 10	2
9	26-1009-9788-6	CLIP, Mirror	4
10	78-8064-1646-3	TUBING, Lens	3

Section 3  
ARM AND FOCUS ASSEMBLY



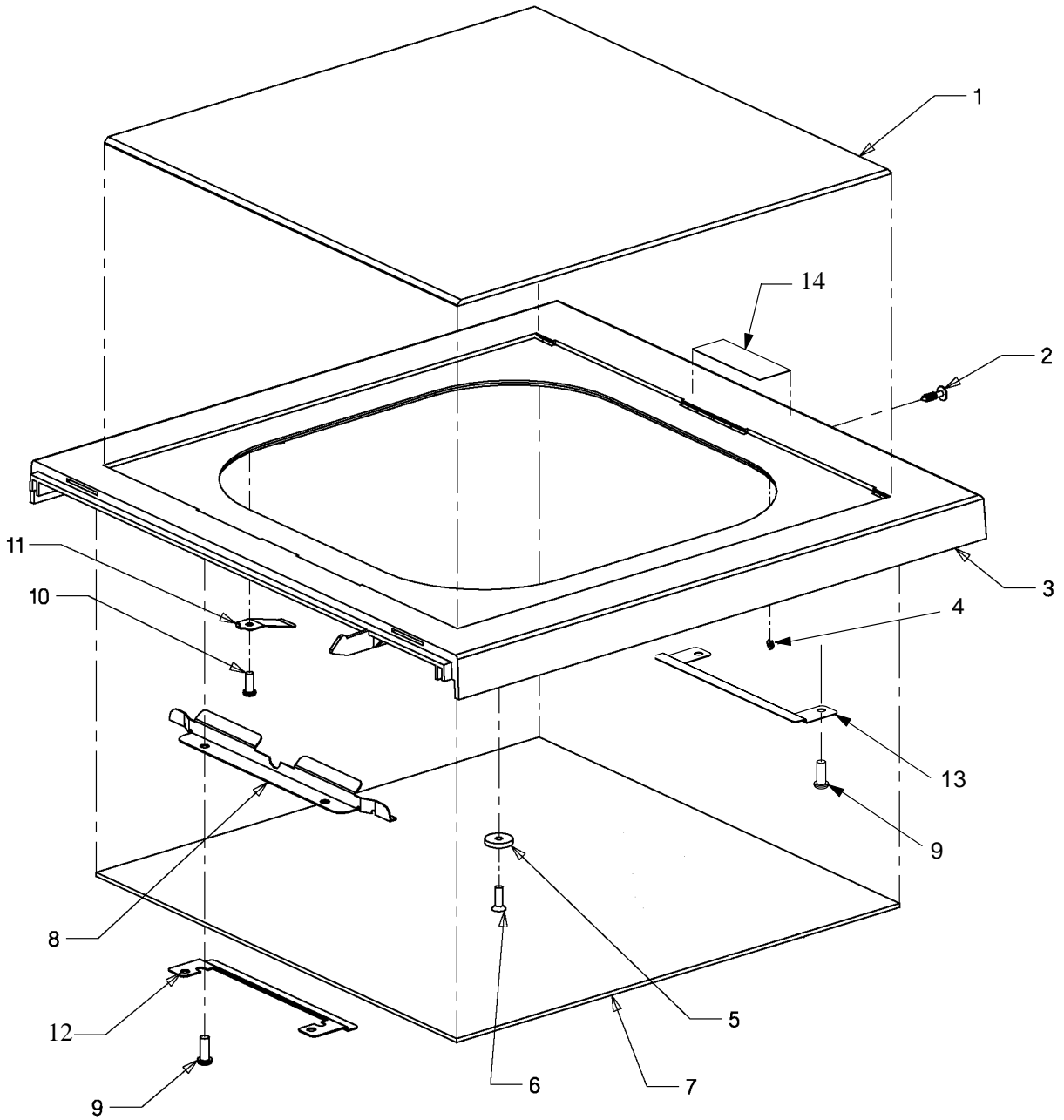
**Section 3**  
**ARM AND FOCUS ASSEMBLY**

Item No.	Part Number	Description	Qty
1	78-8096-5758-4	BRACKET, Head	1
2	26-1002-6172-1	SCREW, Plastite, M4.7 X 10	2
3	78-8064-1555-6	GUIDE, Gear Rack	1
4	78-8064-1552-3	GEAR RACK, Focus	1
5	78-8064-1522-6	GEAR, Focus	1
6	26-1002-4971-8	SCREW, Plastite, 6-19 X 1/2	2
7	78-8064-1556-4	SLIDE, Focus	1
8	78-8096-5744-4	ARM, Detachable	1
9A	78-8096-5743-6	POST (Not used on versions indicated in Note 1 and 2.)	1
9B	78-8096-5788-1	POST, Extended (See Note 1)	1
10	78-8064-1506-9	COVER, Focus	1
11	78-8064-1601-8	KNOB, Focus	1
12	78-8079-8811-4	BOLT, Post	2
13	26-1009-9690-4	SCREW, Crimptite, 10-24 X 1/2	3
14	78-8096-5787-3	BRACKET, Stiffening Arm	1
15	78-8096-5804-6	WRENCH	1
16A	78-8096-5828-5	POST, Folding (Used on 3808 AHDY)	1
16B	78-8096-5826-9	POST, Folding (Used on 3820 AHCY)	1
17	26-1009-9847-0	SPRING, Compression (See Note 2)	1
18	78-8079-8997-1	SCREW, Latch (See Note 2)	1
19	78-8079-8852-8	POST LOCK (See Note 2)	1
20	26-1008-5592-8	SCREW, Taptite, M3.5 x 8 (See Note 2)	2
21	26-1002-5107-8	SCREW, Taptite, Pan Head, 10-32 x 5/8 (See Note 2)	1
22	26-1006-7602-7	NUT, Hex, 1/4 - 20, Elastic (See Note 2)	1
23	26-1009-7284-8	WASHER (See Note 2)	2
24	78-8079-8875-9	POST MOUNT, Pivot (See Note 2)	1
25	78-8079-8850-2	BOLT, Pivot (See Note 2)	1
26	78-8079-8846-0	BRACKET, Pivot (See Note 2)	1

**Note:**

1. Used on 3820 AACT, AHCE, AHCF, AHCH, AHCK, ARCP only.
2. Used on 3808 AHDY and 3820 AHCY only.

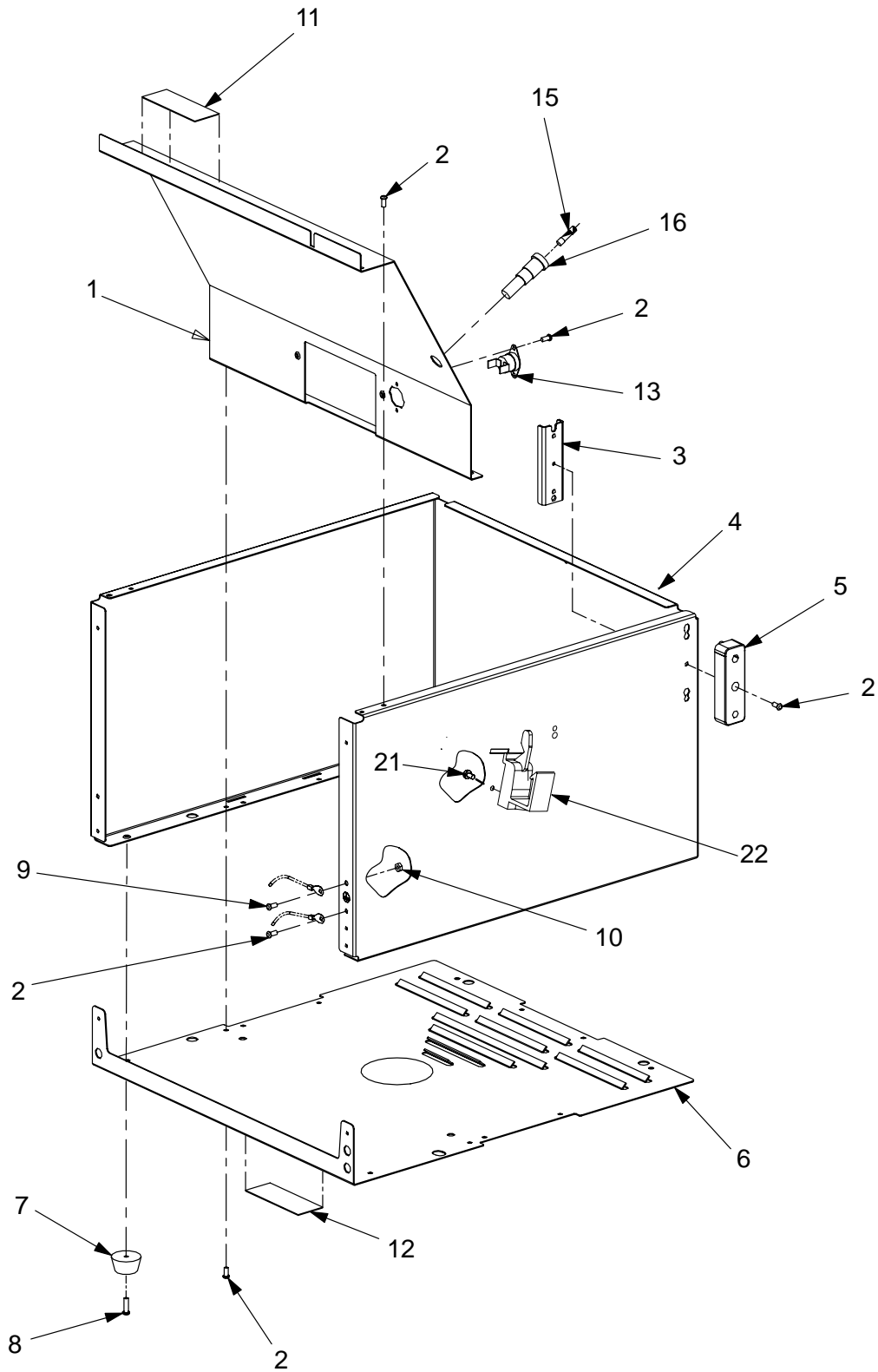
Section 4  
TOP COVER ASSEMBLY



**Section 4**  
**TOP COVER ASSEMBLY**

Item No.	Part Number	Description	Qty
1	78-8064-1473-2	GLASS, Stage	1
2A	78-8096-5750-1	SCREW, Cover	1
2B	78-8096-5805-3	SCREW, Cover Thumb	1
3A	78-8096-5701-4	COVER, Top (10.5 X 10.5)	1
3B	78-8096-5729-5	COVER, Top (A4)	1
4	78-8003-8593-8	RING, Retaining, Rotor Clip	1
5	78-8096-5731-1	WASHER, Plastic	5
6	26-1001-7983-2	NUT, Keps, 6-32	1
7	78-8097-3637-0	FRESNEL	1
8	78-8064-1531-7	RETAINER, Stage Glass	1
9	26-1002-6172-1	SCREW, Plastite, M4 .7 X 10	2
10	26-1002-4971-8	SCREW, Plastite, 6-19 X 1/2	1
11	78-8096-5717-0	SPRING, Cover Detent	1
12	78-8096-5822-8	RETAINER, Back, Fresnel,	1
13	78-8096-5814-5	RETAINER, Front, Fresnel,	1
14	78-8096-5809-5	LABEL, Lampchanger	1

Section 5  
BASE ASSEMBLY



**Section 5**  
**BASE ASSEMBLY**

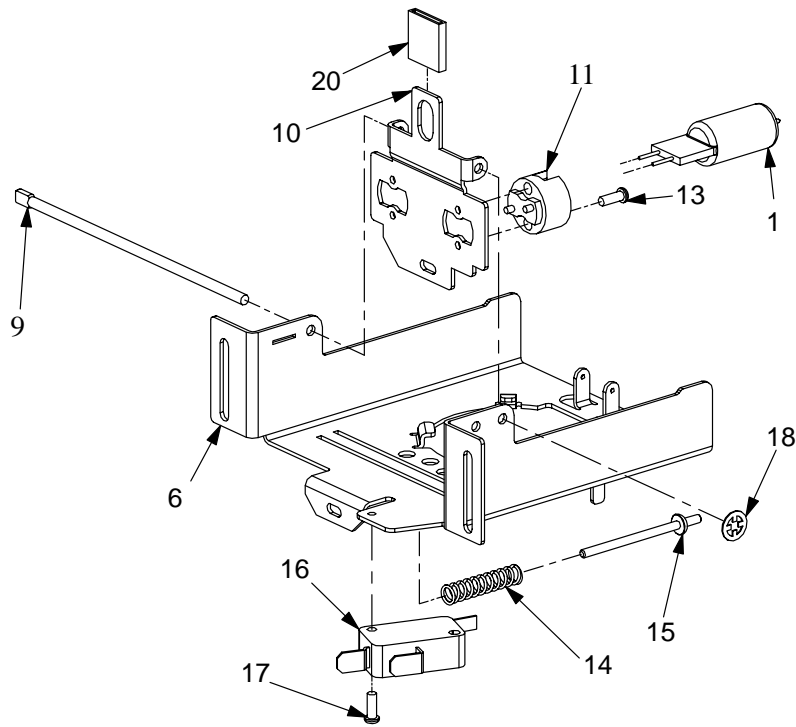
Item No.	Part Number	Description	Qty
1	78-8096-5713-9	BAFFLE	1
2	26-1008-5592-8	SCREW, Taptite, M3.5 X 8	10
3	78-8079-8810-6	BRACKET, Backup, Fixed Post	1
4A	78-8096-5808-7	BASE	1
4B	78-8096-5827-7	BASE (Used on folding post versions only.)	1
5	78-8079-8809-8	BLOCK, Post	1
6	78-8096-5712-1	BASE, Floor	1
7	26-1008-5211-5	FOOT, Mounting	4
8	78-8073-6942-2	SCREW, Foot	4
9	26-1002-5268-8	SCREW, Machine, 6-32 X 3/8	1
10	26-1001-7983-2	NUT, Keps, 6-32	1
11A	78-8096-5807-9	LABEL, Lamp Replacement, EHJ	1
11B	78-8096-5771-7	LABEL, Lamp Replacement, FNT	1
12	34-7033-0130-8	LABEL, Blank (Nameplate)	1
13	78-8096-5770-9	THERMOSTAT, Safety	1
14	Not Used		
15	26-1008-6347-6	FUSE, 4 Amp	1
16	26-1005-6624-4	FUSEHOLDER	1
17 - 20	Not Used		
21	26-1002-4948-6	SCREW, Plastite, 6-19 X 5/16 (Used on folding post versions only.)	2
22	78-8079-8890-3	CRADLE, Post (Used on folding post versions only.)	1
Not Shown	78-8003-8335-4	TIE, Strap	AR



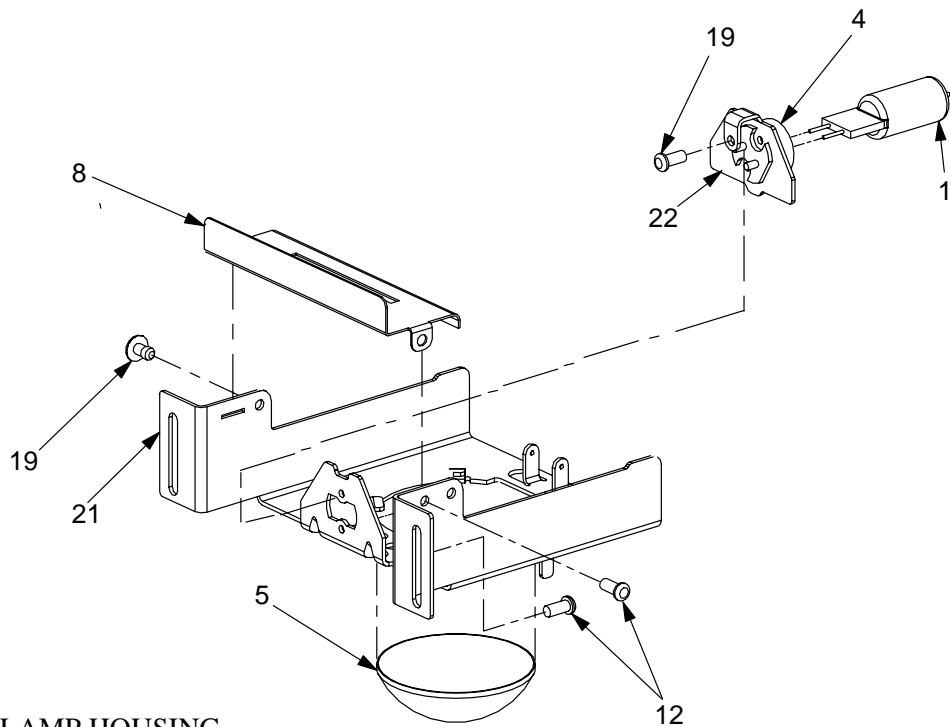
**Section 6**  
**FRONT COVER ASSEMBLY**

Item No.	Part Number	Description	Qty
1	78-8096-5710-5	COVER, Front	1
2	78-8079-8797-5	PLATE, Cord, Small (Gray)	1
3A	78-8065-8223-1	POWER CORD, Europe, 10 Ft.	1
3B	78-8096-5779-0	POWER CORD, Japan, 10 Ft	1
3C	78-8065-8222-3	POWER CORD, U.K.	1
3D	78-8096-5830-1	POWER CORD, China, 10 Ft.	1
4A	78-8096-5702-2	MOTOR, (230V)	1
4B	78-8096-5703-0	MOTOR, (120V)	1
5	78-8096-5718-8	SWITCH, Rocker (See Note 1)	1
6A	78-8079-9070-6	TRANSFORMER, 120V, Taiwan	1
6B	78-8079-8859-3	TRANSFORMER, FNT (220V)	1
6C	78-8079-8860-1	TRANSFORMER, FNT (230/240V)	1
6D	78-8096-5834-3	TRANSFORMER, China	1
7	Not Used		
8	78-8079-9194-4	BLADE, Fan	1
9	78-8096-5730-3	BRACKET, Motor	1
10	78-8096-5726-1	MICROSWITCH	1
11	78-8096-5728-7	BRACKET, Transformer	1
12	78-8096-5740-2	SPRING, Torsion	1
13	26-1008-4567-1	SCREW, Type BT, 4-24 X 3/4	2
14	26-1009-8678-0	SCREW, Taptite, M4 X 60,	4
15	26-1002-4971-8	SCREW, Plastite, 6-19 X 1/2	2
16	26-1002-4967-6	SCREW, Plastite, 4-20 X 3/8	2
17	26-1008-5592-8	SCREW, Taptite, M3.5 X 8	8
18	Not Used		
19	26-1005-6624-4	FUSEHOLDER	1
20	26-1008-6347-6	FUSE, 4 Amp	1
21	Not Used		
22	26-1004-2053-3	WASHER, Lock, Internal/External Tooth, #8	1
23	Not Used		
24	78-8005-1147-5	CLIP	1
25	26-1005-4113-0	CLIP, Clamp	1
26	78-8079-9018-5	LABEL, Fuse, 4Amp	1

**Section 7  
LAMP HOUSING**



**DUAL LAMP HOUSING**

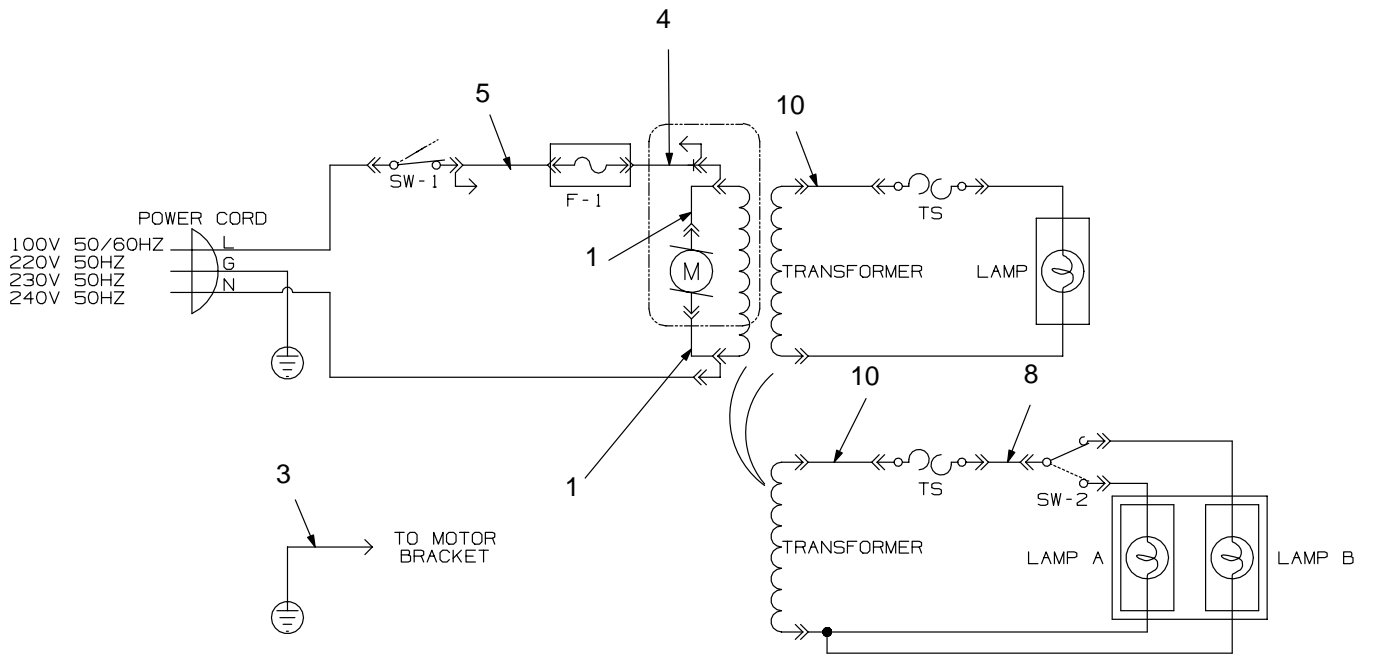


**SINGLE LAMP HOUSING**

**Section 7**  
**LAMP HOUSING**

Item No.	Part Number	Description	Qty
1A	78-8054-1175-4	LAMP, Projection, FNT, 275W, 24V	1
1B	78-8062-0930-6	LAMP, Projection, EHJ, 250W, 24V	1
2 - 3	Not Used		
4A	78-8096-5716-2	SOCKET, Lamp, TP61	1
4B	78-8096-5789-9	SOCKET, Black Leads	1
5	78-8096-5720-4	REFLECTOR	1
6	78-8096-5734-5	BRACKET, Reflector, Dual	1
7	Not Used		
8	78-8096-5747-7	BRACKET, Deflector	1
9	78-8096-5727-9	ROD, Pivot	1
10	78-8096-5745-1	BRACKET, Socket, Dual	1
11	78-8096-5785-7	SOCKET ASSEMBLY, Dual	1
12	26-1008-5592-8	SCREW, Taptite, M3.5 X 8	3
13	26-1002-5086-4	SCREW, Taptite, 4-40 X 3/8	2
14	12-7992-3100-1	SPRING, Compression	1
15	78-8096-5749-3	SHAFT, Over Center	1
16	78-8096-5768-3	SWITCH, Lampchanger	1
17	26-1002-6208-3	SCREW, Taptite, M3 X 16	2
18	78-8656-5801-3	RING, Push-on,	1
19	26-1004-9300-1	SCREW, Taptite, M3 X 6	1
20	78-8096-5793-1	TUBING, Insulation	1
21	78-8096-5722-0	BRACKET, Reflector	1
22	78-8096-5811-1	SOCKET ASSEMBLY, FNT Single	1

**Section 8**  
**WIRE JUMPERS**



**Section 8**  
**WIRE JUMPERS**

Item No.	Part Number	Description	Qty
1	78-8096-5737-8	JUMPER 8"	2
2	Not Used		
3	78-8096-5741-0	JUMPER, Ground 7"	1
4	78-8079-8973-2	JUMPER, 10" Black (Switch/Fuse) (Used on FNT versions only.)	1
5	78-8097-3619-8	JUMPER, 5", Black	1
6 - 7	Not Used		
8	78-8079-8966-6	JUMPER	1
9	Not Used		
10	78-8065-8273-6	WIRE, Lead, Power Supply, Kill Switch (Used on FNT versions only.)	1

*This page intentionally left blank.*

## Appendix A SPECIFICATIONS

Country	Power Cord	Model Alpha	Stock Number	Voltage/Hz	Agency	Stage Size	Head Type	Lamp Changer	Color Tuning	Post Type	Lamp Type	Handle	Lamp Control	Lamps Installed	Fresnel	Power	Fuse	Amps	Cord Storage
Thailand	European	3805 AHAF	78-9236-5925-0	220/50		A4	Open Singlet	No	Internal	Fixed	FNT	No	None	1	4400 SE CL	Transformer	T4A	1.7	No
Korea	European	3805 AHAK	78-9236-5924-3	220/60		A4	Open Singlet	No	Internal	Fixed	FNT	No	None	1	4400 SE CL	Transformer	T4A	1.7	No
Thailand	European	3808 AHDF	78-9236-5939-1	220/50		A4	Open Singlet	Yes	Internal	Fixed	FNT	No	None	1	4400 SE CL	Transformer	T4A	1.7	No
Korea	European	3808 AHDK	78-9236-5938-3	220/60		A4	Open Singlet	Yes	Internal	Fixed	FNT	No	None	1	4400 SE CL	Transformer	T4A	1.7	No
Thailand	European	3820 AHCF	78-9236-5953-2	220/50		A4	Open Triplet	Yes	Internal	Fixed	FNT	No	None	1	9800 DE CL	Transformer	T4A	1.7	No
Korea	European	3820 AHCK	78-9236-5952-4	220/60		A4	Open Triplet	Yes	Internal	Fixed	FNT	No	None	1	9800 DE CL	Transformer	T4A	1.7	No
Taiwan	Japan	3805 AAAT	78-9236-5922-7	120/60		A4	Open Singlet	No	Internal	Fixed	FNT	No	None	1	4400 SE CL	Transformer	T4A	3	No
Philippines	Japan	3805 ARAP	78-9236-5920-1	240/60		A4	Open Singlet	No	Internal	Fixed	FNT	No		1	4400 SE CL	Transformer	T4A	1.7	No
Taiwan	Japan	3808 AADT	78-9236-5936-7	120/60		A4	Open Singlet	Yes	Internal	Fixed	FNT	No	None	1	4400 SE CL	Transformer	T4A	3	No
Philippines	Japan	3808 ARDP	78-9236-5934-2	240/60		A4	Open Singlet	Yes	Internal	Fixed	FNT	No	None	1	4400 SE CL	Transformer	T4A	1.7	No
Taiwan	Japan	3820 AACT	78-9236-5950-8	120/60		A4	Open Triplet	Yes	Internal	Fixed	FNT	No	None	1	9800 DE CL	Transformer	T4A	3	No
Philippines	Japan	3820 ARCP	78-9236-5948-2	240/60		A4	Open Triplet	Yes	Internal	Fixed	FNT	No	None	1	9800 DE CL	Transformer	T4A	1.7	No
Hong Kong	Other	3805 AHAH	78-9236-5919-3	220/50		A4	Open Singlet	No	Internal	Fixed	FNT	No		1	4400 SE CL	Transformer	T4A	1.7	No
Hong Kong	Other	3808 AHDH	78-9236-5933-4	220/50		A4	Open Singlet	Yes	Internal	Fixed	FNT	No	None	1	4400 SE CL	Transformer	T4A	1.7	No
Hong Kong	Other	3820 AHCH	78-9236-5947-4	220/50		A4	Open Triplet	Yes	Internal	Fixed	FNT	No	None	1	9800 DE CL	Transformer	T4A	1.7	No
Singapore & Malaysia	U.K.	3805 AHAE	78-9236-6002-7	240/50		A4	Open Singlet	No	Internal	Fixed	FNT	No	None	1	4400 SE CL	Transformer	None	1.7	No
China	U.K.	3805 AHAY	78-9236-6092-8			A4	Open Singlet	No	Internal	Fixed	EHJ	No	None	1	9800 DE CL	Transformer	T4A		No
Singapore & Malaysia	U.K.	3808 AHDE	78-9236-6003-5	240/50		A4	Open Singlet	Yes	Internal	Fixed	FNT	No	None	1	4400 SE CL	Transformer	None	1.7	No
China	U.K.	3808 AHDY	78-9236-6093-6			A4	Open Singlet	Yes	Internal	Folding	EHJ	No	None	1	9800 DE CL	Transformer	T4A		No
Singapore & Malaysia	U.K.	3820 AHCE	78-9236-6004-3	240/50		A4	Open Triplet	Yes	Internal	Fixed	FNT	No	None	1	9800 DE CL	Transformer	None	1.7	No
China	U.K.	3820 AHCY	78-9236-6094-4			A4	Open Triplet	Yes	Internal	Folding	EHJ	No	None	2	9800 DE CL	Transformer	T4A		No

