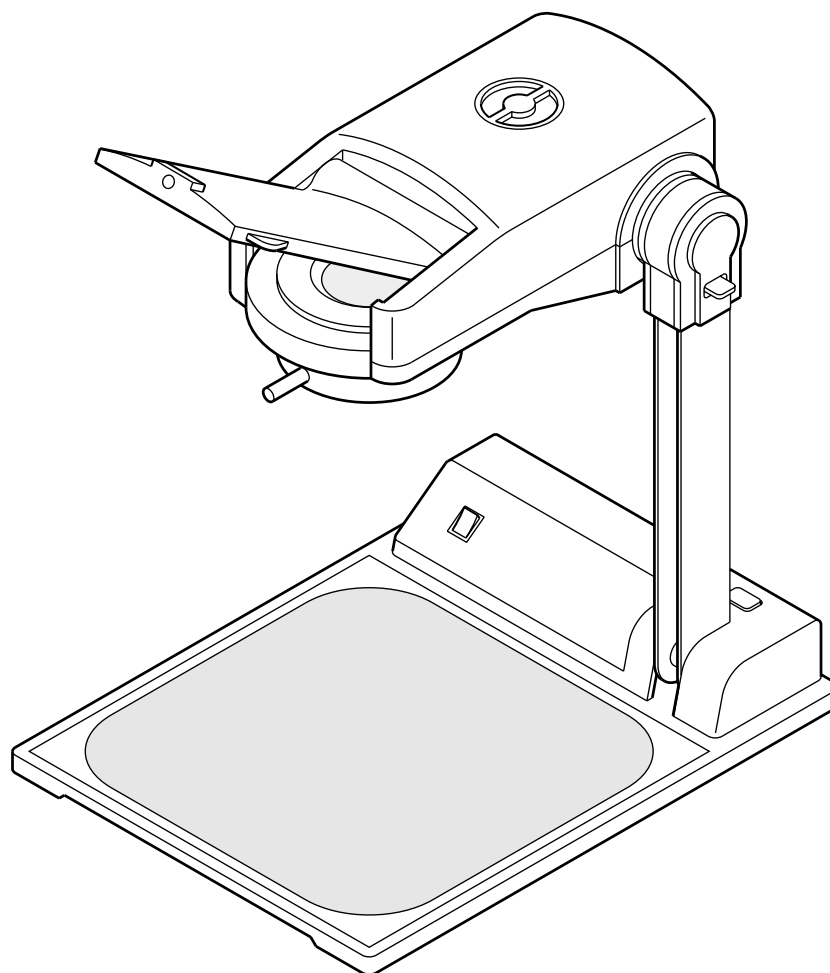


3M 2660 Overhead Projector

Illustrated Parts Breakdown



3M Visual Systems Division
6801 River Place Boulevard
Austin, Texas 78726-9000

OHP Service Documentation Resource
Copyright © 2001, 3M IPC. All Rights Reserved
78-6970-7536-0

Illustrated Parts Breakdown (IPB)

This Illustrated Parts Breakdown (IPB) Manual contains the information necessary to locate and identify assemblies, sub-assemblies, and specific parts of the 2660 Overhead Projector.

Part Numbers

All components available on a replacement basis are listed with their 3M identification number. The parts identification list opposite each illustration provides the description adequate to identify components. If the component is available only as part of the next higher assembly, the description column provides the next higher assembly description or identification number.

Locating and Identifying a Part

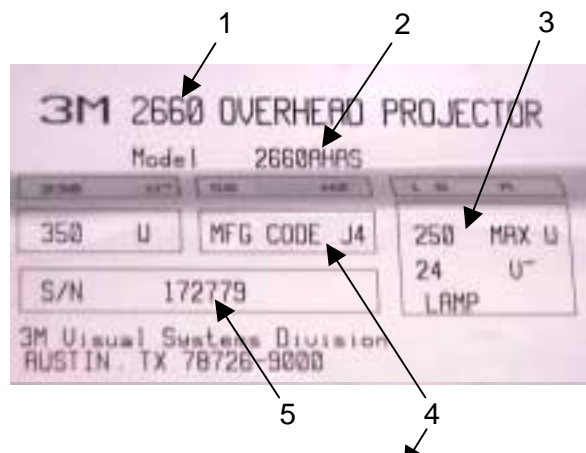
If physical appearance and general location of an item are known:

1. Use the IPB Section Titles to help determine which assembly or sub-assembly includes the item.
2. Refer to the view for the assembly or sub-assembly and locate the item on the exploded view. Match the part callout number to the corresponding number in the parts list.

Machine Identification Plate

The serial number plate for the 2660 is located on the bottom of the projector. The Machine Identification Plate is divided into the following components:

1. Product Name: The specific version number of the projector.
2. Model Number/Alpha Code: The series number of the projector followed by a three or four character alpha code identifier. The Alpha Code indicates the design level, specific product characteristics, power cord or distribution specific to a country.
3. Lamp: The electrical rating of the lamp.
4. MFG Code: The MFG Code indicates the year and quarter the projector was built. (See the example to the right):
5. S/N: The serial number assigned to this projector.



MFG Code			
Letter		Digit	
J	2000	1	Jan-Mar
K	2001	2	Apr-Jun
L	2002	3	Jul-Sep
M	2003	4	Oct-Dec
A	2004	1	Jan-Mar

Ordering Parts

When ordering parts, include the following information:

1. Machine model number and serial number.
2. Parts identification number.
3. Part description.
4. Quantity required.

For U.S. retail customers: Call 1-800-650-8429, or fax 1-800-650-9268. Dealers: Refer to Dealers Guide.
 3M Subsidiaries: Contact Export Operations.

Table of Contents

ILLUSTRATED PARTS BREAKDOWN (IPB)..... 1

[QUICK REFERENCE PARTS INDEX](#) 3

[FIGURE 0. MACHINE OVERVIEW](#)..... 4

[FIGURE 1. HEAD ASSEMBLY SPARE PARTS](#)..... 5

[FIGURE 2. HEAD AND POST SPARE PARTS](#) 6

[FIGURE 3. BASE ASSEMBLY](#) 7

[FIGURE 3. BASE ASSEMBLY PARTS LIST](#)..... 8

[FIGURE 4. PLASTIC COVERS KIT](#)..... 9

[FIGURE 4. PLASTIC COVERS KIT PARTS LIST](#)..... 10

[FIGURE 5. SMALL ELECTRICAL PARTS KIT \(100-127V MACHINES\)](#) 11

[FIGURE 5. SMALL ELECTRICAL KIT PARTS LIST \(100-127V MACHINES\)](#) 12

[FIGURE 6. SMALL ELECTRICAL PARTS KIT \(220-250V MACHINES\)](#) 13

[FIGURE 6. SMALL ELECTRICAL KIT PARTS LIST \(220-250V MACHINES\)](#) 14

[FIGURE 7. SMALL PARTS KIT](#)..... 15

[FIGURE 8. WIRING COMPONENTS](#) 17

[APPENDIX A. SPECIFICATIONS](#)..... 18

[WHERE TO GET ADDITIONAL INFORMATION](#) 22

IMPORTANT NOTICE

**3M reserves the right to sell or furnish NEW OR RECONDITIONED PARTS.
New and reconditioned parts are covered by the same 3M new parts limited warranty.**

Quick Reference Parts Index

Description	Part Number	Figure No.	Item No.
Lamp, FNT, 24V, 275W (100-127V machines)	78-6969-9246-6	1	5A
Lamp, EHJ, 24V, 250W (220-250V machines)	78-6969-9357-1	1	5B
Fresnel Lens, Reflective, A4, 176.2mm FL	78-8065-8539-0	3	3

Figure 0. Machine Overview

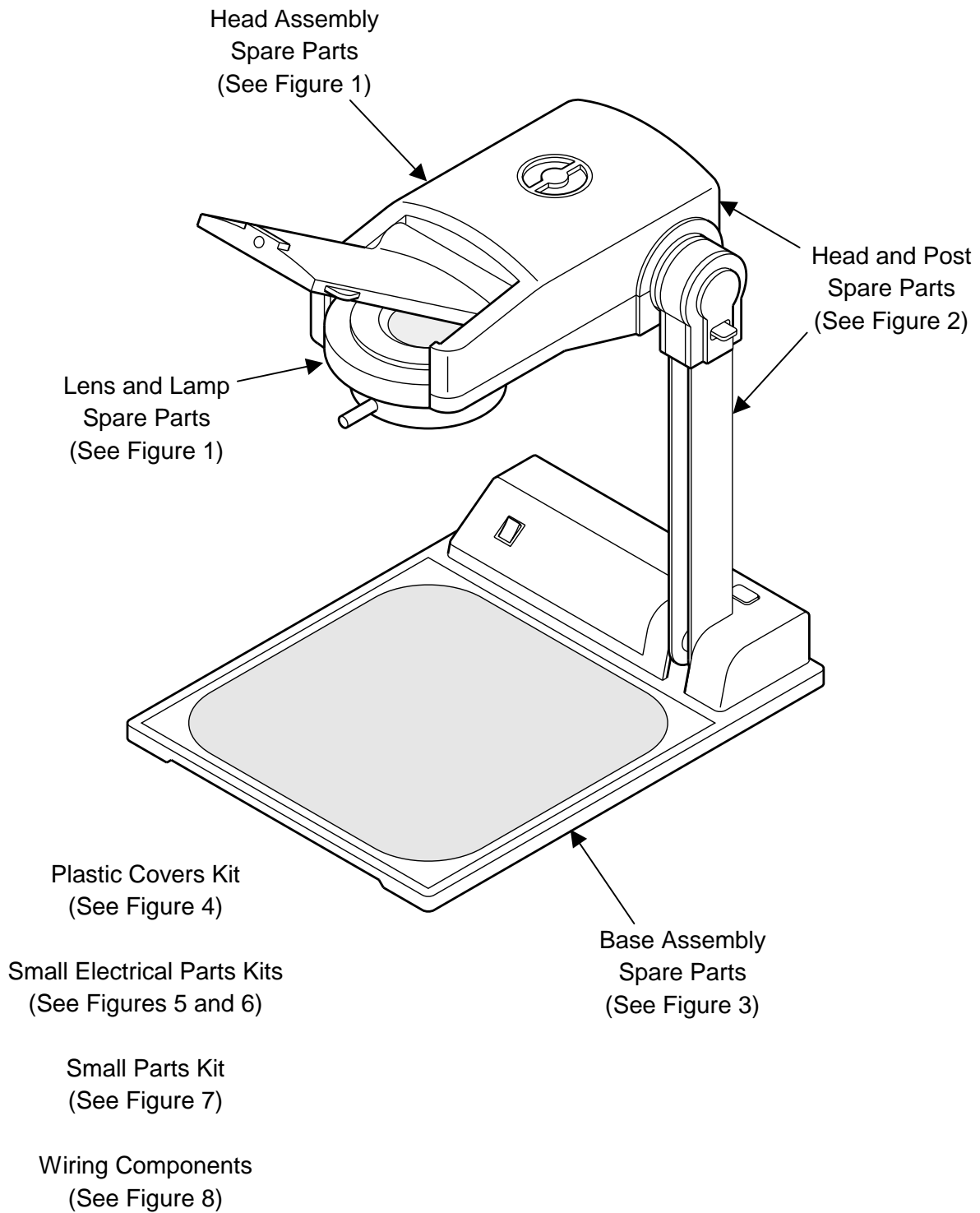
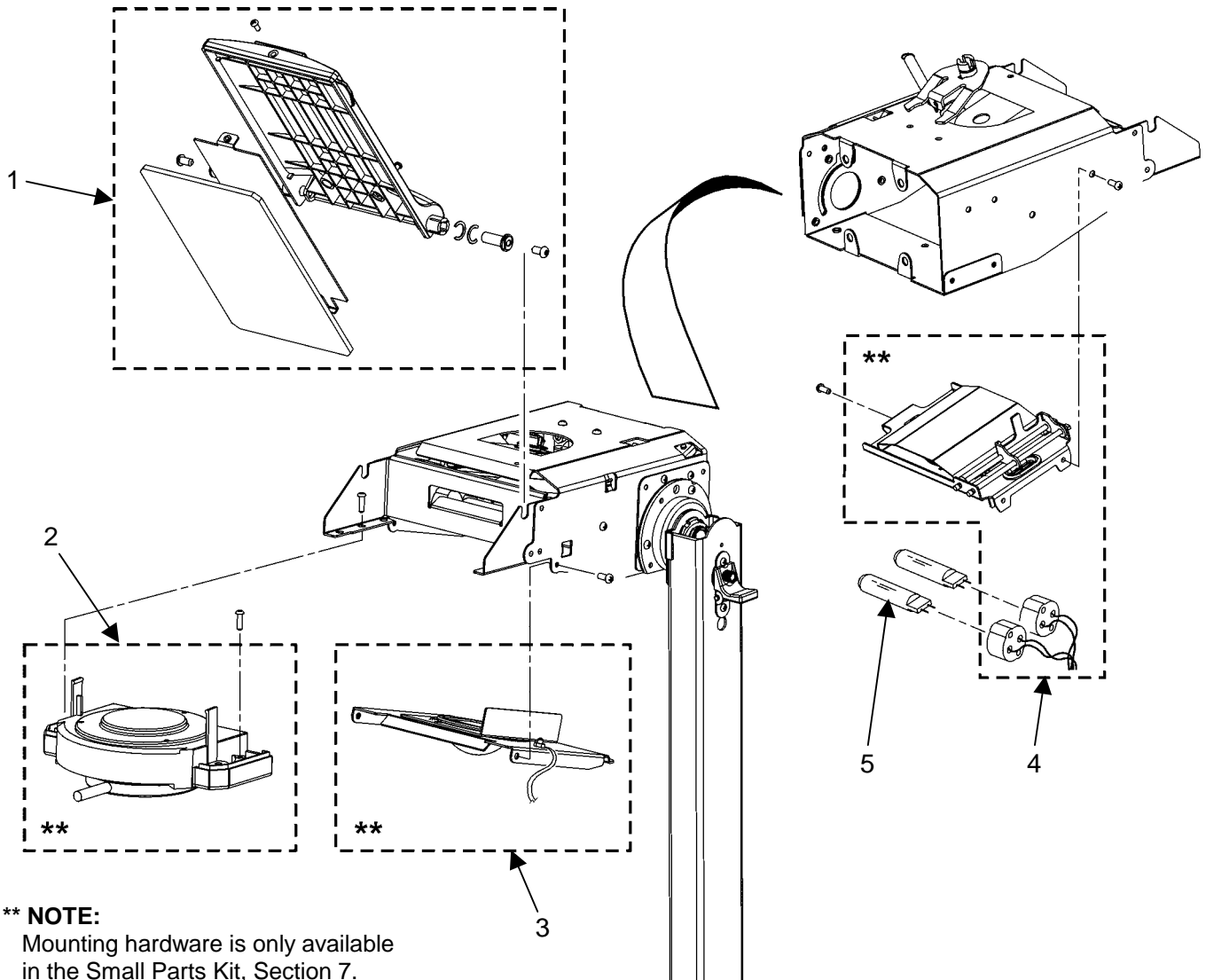


Figure 1. Head Assembly Spare Parts



**** NOTE:**
Mounting hardware is only available
in the Small Parts Kit, Section 7.

Figure 1. Head Assembly Spare Parts

Item No.	3M Part Number	Description	Qty.
1	XO-0038-9281-7	Mirror Assembly	1
2	XO-0038-9280-9	Projection Lens Assembly	1
3	XO-0038-9283-3	Condenser Lens Assembly	1
4	XO-0038-9279-1	Lamp Bracket Assembly	1
5A	78-6969-9246-6	Lamp, FNT, 24V, 275W (100-127V machines)	2
5B	78-6969-9357-1	Lamp, EHJ, 24V, 250W (220-250V machines)	2

Figure 2. Head and Post Spare Parts

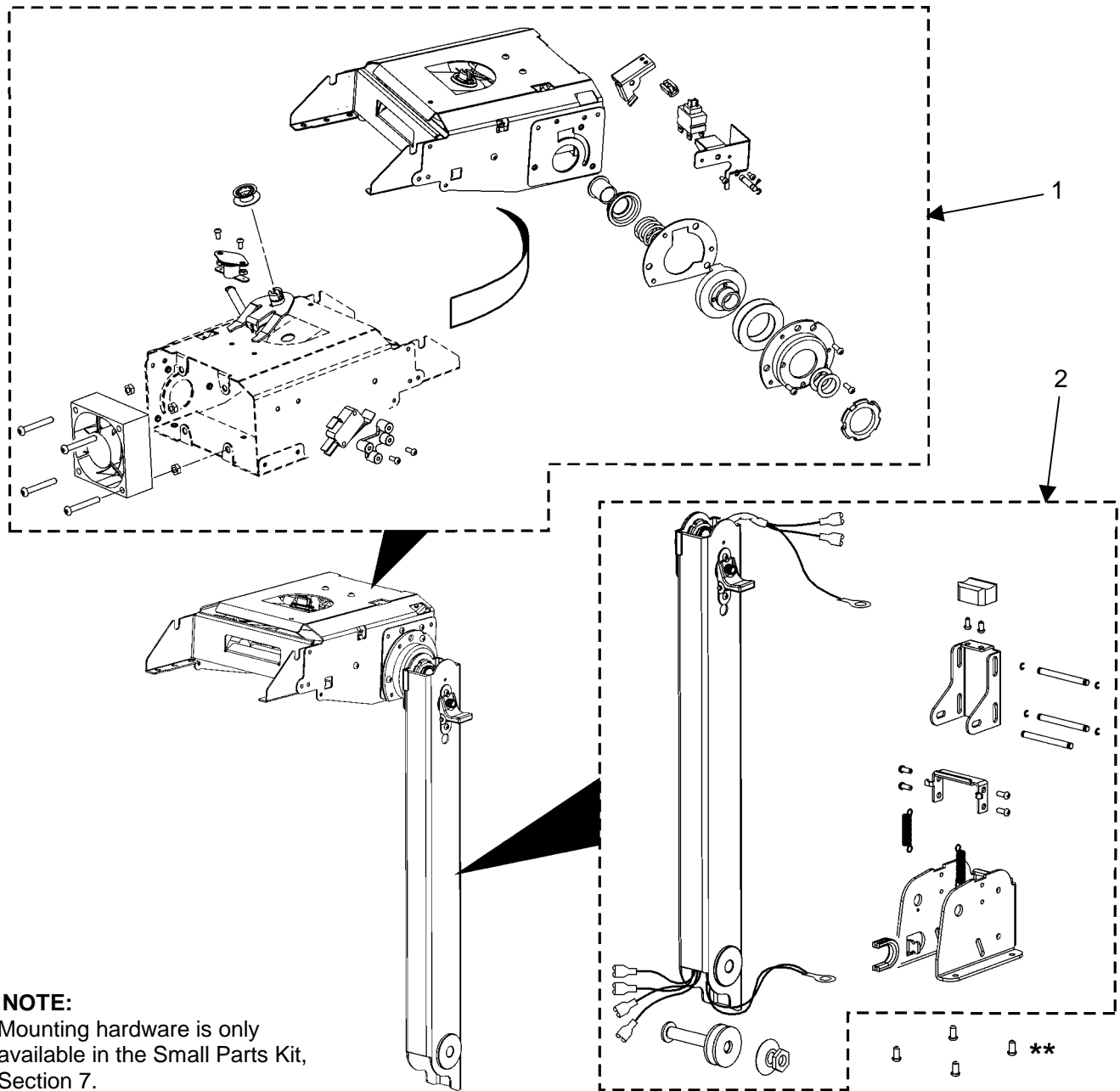


Figure 2. Head and Post Spare Parts

Item No.	3M Part Number	Description	Qty.
1	XO-0038-9284-1	Head Assembly	1
2	XO-0038-9282-5	Post Assembly	1

Figure 3. Base Assembly Spare Parts

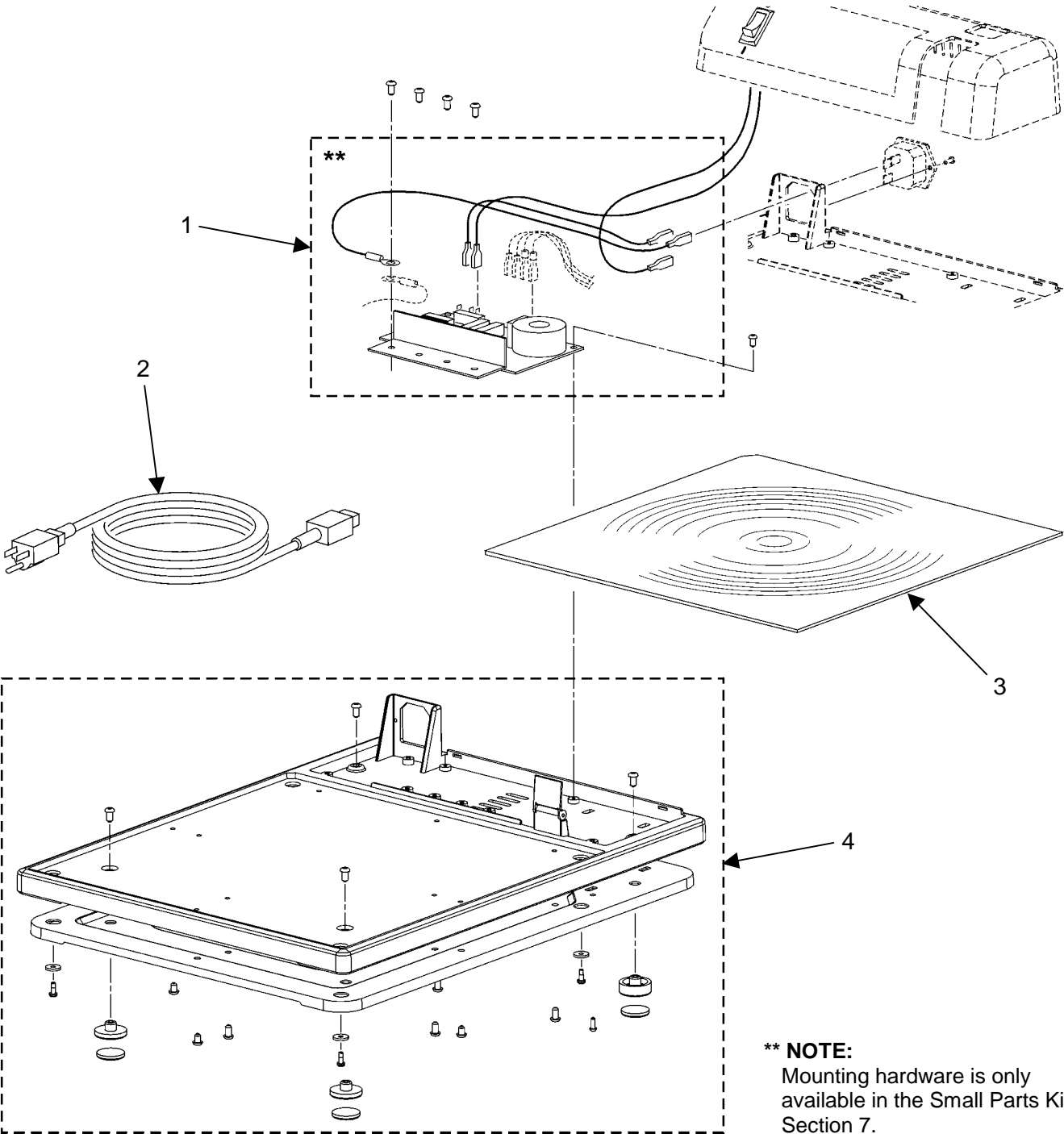


Figure 3. Base Assembly Spare Parts

Item No.	3M Part Number	Description	Qty.
1A	XO-0038-9290-8	Power Supply Assembly (100-127V machines)	1
1B	XO-0038-9286-6	Power Supply Assembly (220-250V machines)	1
2A	- - -	Power Cord, Italy, 10 ft.	1
2B	- - -	Power Cord, U.S.	1
2C	- - -	Power Cord, Japan	1
2D	- - -	Power Cord, European Standard	1
2E	- - -	Power Cord, Australia	1
2F	- - -	Power Cord, United Kingdom	1
2G	- - -	Power Cord, Switzerland	1
2H	- - -	Power Cord, South Africa	1
2I	- - -	Power Cord, India	1
3A	- - -	Fresnel Lens, Reflective, 10.5 inch (100-127V machines)	1
3B	78-8065-8539-0	Fresnel Lens, Reflective, A4 (220-250V machines)	1
4A	XO-0038-9292-4	Base Assembly (100-127V machines)	1
4B	XO-0038-9285-8	Base Assembly (220-250V machines)	1

Figure 4. Plastic Covers Kit

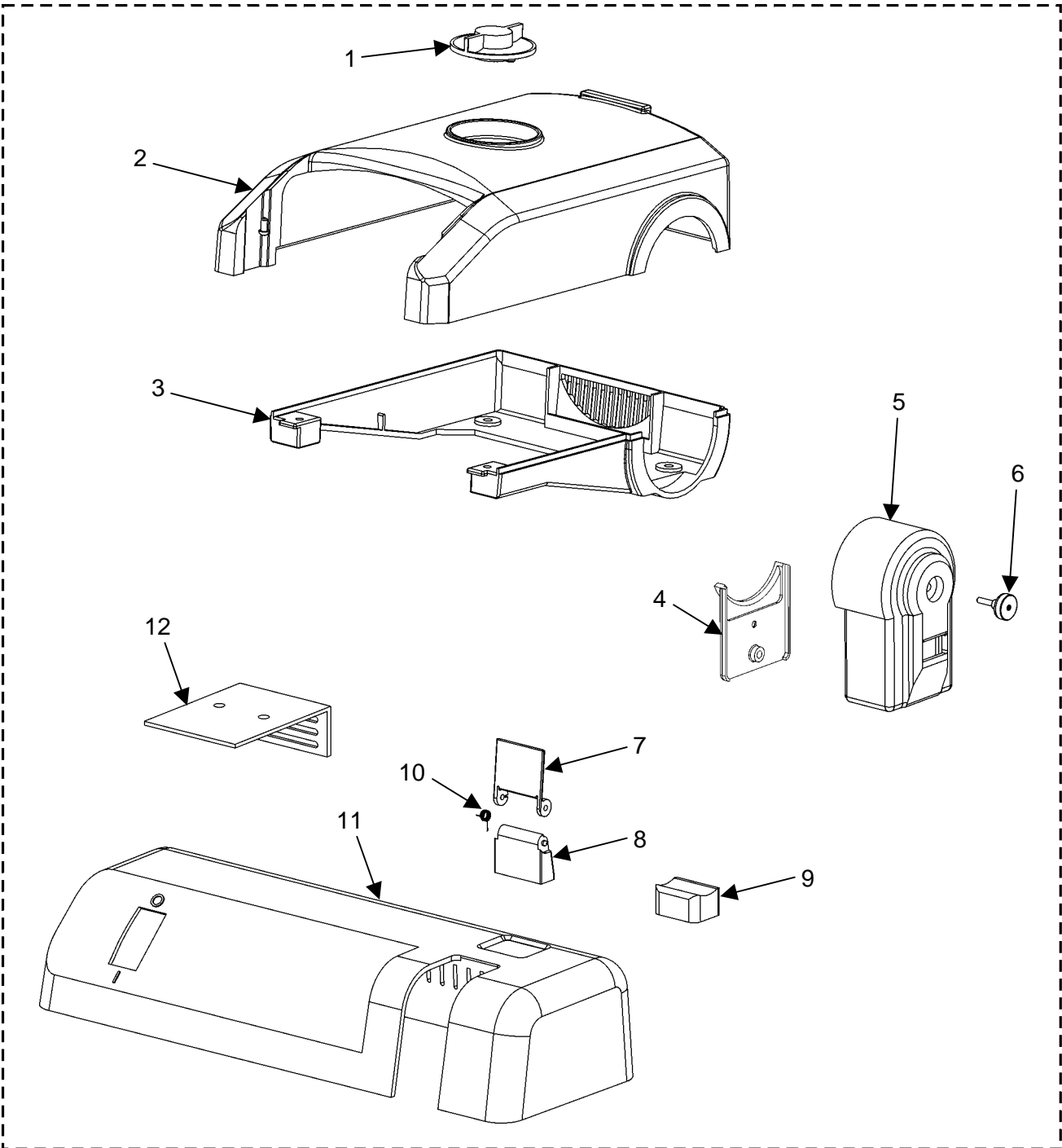


Figure 4. Plastic Covers Kit

Item No.	3M Part Number	Description	Qty.
0	XO-0038-9287-4	Plastic Covers Kit	1
Kit Includes:			
1	---	Button, Lamp Changer	1
2	---	Shroud, Upper	1
3	---	Shroud, Lower	1
4	---	Plug, Top Post	1
5	---	Cover, Top Post	1
6	---	Plug, Small	5
7	---	Cover, Post	1
8	---	Bracket, Post Cover	1
9	---	Button, Bottom	1
10	---	Spring, Post Cover	1
11	---	Cover, Base	1
12	---	Shield, Heat	1

Figure 5. Small Electrical Parts Kit (100-127V Machines)

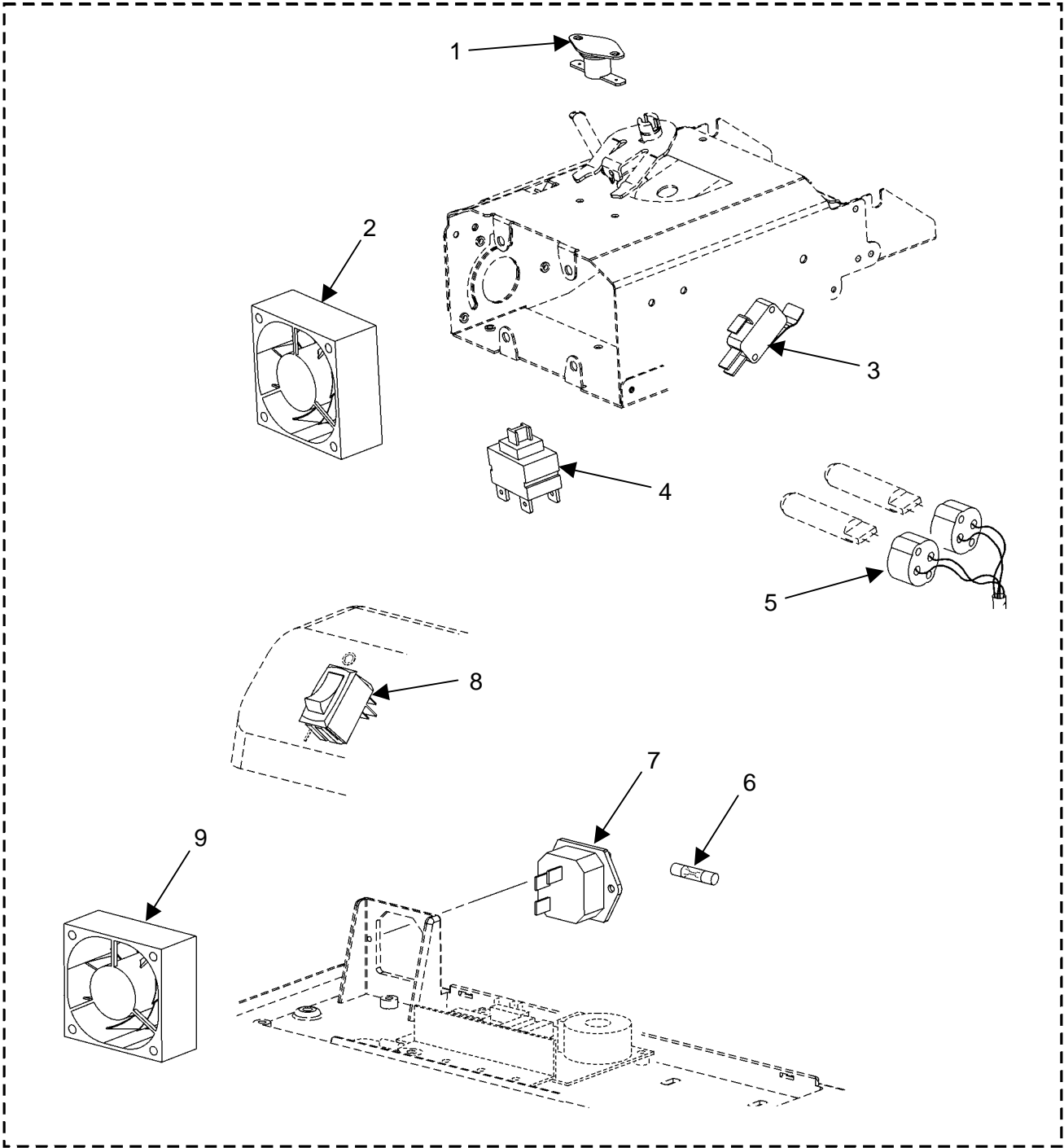


Figure 5. Small Electrical Parts Kit (100-127V Machines)

Item No.	3M Part Number	Description	Qty.
0	XO-0038-9291-6	Small Electrical Parts Kit	1
Kit Includes:			
1	---	Thermostat	2
2	---	Fan, Head	2
3	---	Switch, Lamp Changer	2
4	---	Switch, Safety	2
5	---	Socket, Lamp	4
6	---	Fuse, T4 Amp	6
7	---	Connector, IEC	2
8	---	Switch, On/Off	2
9	---	Fan, Base	2

Figure 6. Small Electrical Parts Kit (220-250V Machines)

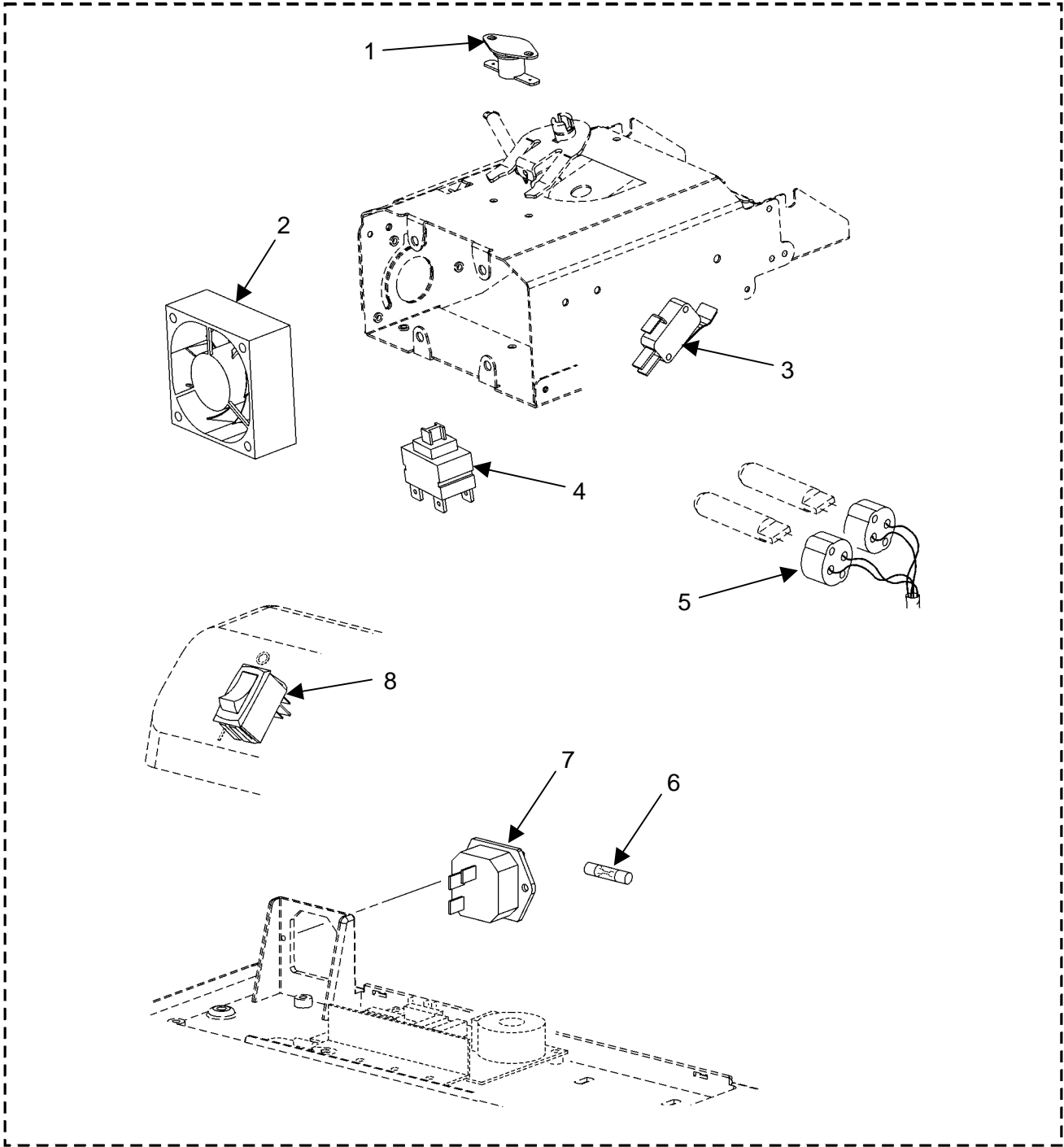


Figure 6. Small Electrical Parts Kit (220-250V Machines)

Item No.	3M Part Number	Description	Qty.
0	XO-0038-9288-2	Small Electrical Parts Kit	1
Kit Includes:			
1	---	Thermostat	2
2	---	Fan, Head	2
3	---	Switch, Lamp Changer	2
4	---	Switch, Safety	2
5	---	Socket, Lamp	4
6	---	Fuse, T2 Amp	6
7	---	Connector, IEC	2
8	---	Switch, On/Off	2

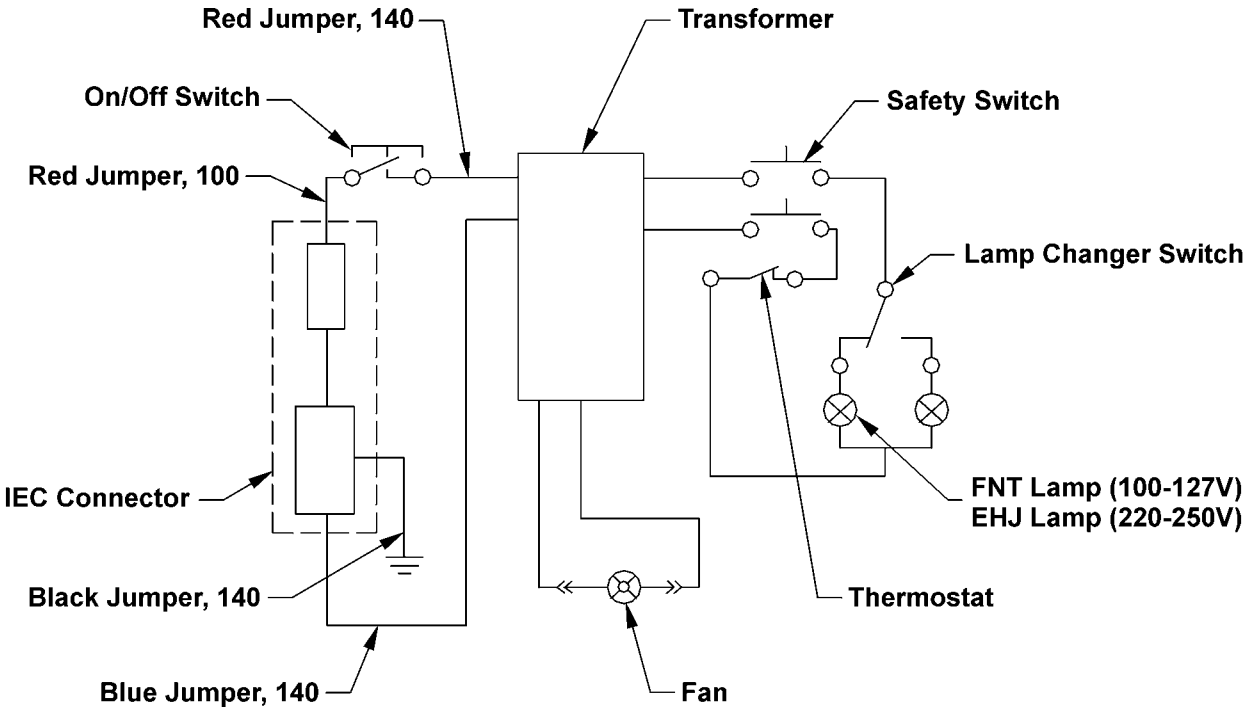
Figure 7. Small Parts Kit (No Picture)

Item No.	3M Part Number	Description	Qty.
0	XO-0038-9289-0	Small Parts Kit	1
Kit Includes:			
1	---	Screw, Fresnel Lens	12
2	---	Screw, ST2.9 x 6F	10
3	---	Screw, ST2.9 x 8F	12
4	---	Screw, ST2.9 x 10F	12
5	---	Screw, ST2.9 x 12F	12
6	---	Screw, ST2.9 x 18	10
7	---	Screw, ST4.2 x 6F	20
8	---	Screw, ST4.2 x 8F	12
9	---	Screw, ST2.9 x 8F	12
10	---	Screw, M2.5 x 6	10
11	---	Screw, M2.5 x 8	10
12	---	Screw, M2.5 x 10	10
13	---	Screw, M3 x 8	12
14	---	Screw, M3 x 10	10
15	---	Screw, M4 x 10	10
16	---	Screw, M2.5 x 6	12
17	---	Screw, M3 x 8	20
18	---	Screw, M4 x 8	12
19	---	Screw, M4 x 30	12
20	---	Screw, M3 x 6	12
21	---	Screw, ST2.9 x 12F	12
22	---	Screw, ST2.9 x 4.5	12
23	---	Screw, 3 x 8	12
24	---	Foot, Front	8

Figure 7. Small Parts Kit (Continued)

Item No.	3M Part Number	Description	Qty.
25	---	Foot, Rear	8
26	---	Cushion, Foot	10
27	---	Nut, M3	12
28	---	Nut, M4	12
29	---	Nut, M8	12
30	---	Nut, Inside Bracket	6
31	---	Bolt, Post Mount	4
32	---	Spring, External	6
33	---	Spring, Post Cover	6
34	---	Spring, Post Up	6
35	---	Small Plug	10
36	---	Washer	10
37	---	Washer, Toothed, 4mm	10
38	---	Washer, Toothed, 3mm	10
39	---	Washer, Bolt, Plastic	8
40	---	Washer, Spring	8
41	---	Washer, Plastic	8

Figure 8. Wiring Components



APPENDIX A – 2660 SPECIFICATIONS

Model Alpha	2660 AAAD	2660 AAAT	2660 ABAJ	2660 ABAS	2660 AHAA	2660 AHAC
Country	Saudi Arabia	Taiwan	Japan	Indonesia	Australia	Chile
Power Cord	United States	Japan	Japan	Europe	Australia	Italy
Voltage/Hz	127/60	120/60	100/50/60	220/50	240/50	230/50
Agency			MITI		SAA	
Stage Size	A4	A4	A4	A4	A4	A4
Head Type	Open Triplet Varifocal	Open Triplet Varifocal	Open Triplet Varifocal	Open Triplet Varifocal	Open Triplet Varifocal	Open Triplet Varifocal
Lamp Changer	Yes	Yes	Yes	Yes	Yes	Yes
Color Tuning	Internal	Internal	Internal	Internal	Internal	Internal
Post Type	Folding	Folding	Folding	Folding	Folding	Folding
Lamp Type	EHJ	EHJ	EHJ	FNT	FNT	FNT
Handle	No	No	No	No	No	No
Lamp Control	No	No	No	No	No	No
Lamps Installed	2	2	2	2	2	2
Fresnel	Single Element	Single Element	Single Element	Single Element	Single Element	Single Element
Power	Solid State Power Supply	Solid State Power Supply	Solid State Power Supply	Solid State Power Supply	Solid State Power Supply	Solid State Power Supply
Fuse	T4 Amp	T4 Amp	T4 Amp	T2 Amp	T2 Amp	T2 Amp
Cord Storage	No	No	No	No	No	No

APPENDIX A - 2660 SPECIFICATIONS (Continued)

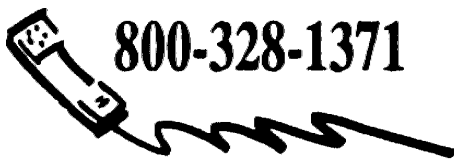
Model Alpha	2660 AHAE	2660 AHAF	2660 AHAG	2660 AHAH	2660 AHAK	2660 AHAL
Country	Malaysia	Thailand	India	Hong Kong	Korea	Singapore
Power Cord	United Kingdom	Europe	India	United Kingdom	Europe	United Kingdom
Voltage/Hz	250/50	240/50	230/50	220/50	220/60	230/50
Agency						
Stage Size	A4	A4	A4	A4	A4	A4
Head Type	Open Triplet Varifocal	Open Triplet Varifocal	Open Triplet Varifocal	Open Triplet Varifocal	Open Triplet Varifocal	Open Triplet Varifocal
Lamp Changer	Yes	Yes	Yes	Yes	Yes	Yes
Color Tuning	Internal	Internal	Internal	Internal	Internal	Internal
Post Type	Folding	Folding	Folding	Folding	Folding	Folding
Lamp Type	FNT	FNT	FNT	FNT	FNT	FNT
Handle	No	No	No	No	No	No
Lamp Control	No	No	No	No	No	No
Lamps Installed	2	2	2	2	2	2
Fresnel	Single Element	Single Element	Single Element	Single Element	Single Element	Single Element
Power	Solid State Power Supply	Solid State Power Supply	Solid State Power Supply	Solid State Power Supply	Solid State Power Supply	Solid State Power Supply
Fuse	T2 Amp	T2 Amp	T2 Amp	T2 Amp	T2 Amp	T2 Amp
Cord Storage	No	No	No	No	No	No

APPENDIX A - 2660 SPECIFICATIONS (Continued)

Model Alpha	2660 AHAN	2660 AHAR	2660 AHAS	2660 AHAU	2660 AHAY	2660 AHAZ
Country	New Zealand	South Africa	Europe Std.	United Kingdom	China	Switzerland
Power Cord	Australia	South Africa	Europe	United Kingdom	China	Switzerland
Voltage/Hz	240/50	240/50	230/50	230-240/50	220/50	230/50
Agency		SABS	European	European		SEV
Stage Size	A4	A4	A4	A4	A4	A4
Head Type	Open Triplet Varifocal	Open Triplet Varifocal	Open Triplet Varifocal	Open Triplet Varifocal	Open Triplet Varifocal	Open Triplet Varifocal
Lamp Changer	Yes	Yes	Yes	Yes	Yes	Yes
Color Tuning	Internal	Internal	Internal	Internal	Internal	Internal
Post Type	Folding	Folding	Folding	Folding	Folding	Folding
Lamp Type	FNT	FNT	FNT	FNT	FNT	FNT
Handle	No	No	No	No	No	No
Lamp Control	No	No	No	No	No	No
Lamps Installed	2	2	2	2	2	2
Fresnel	Single Element	Single Element	Single Element	Single Element	Single Element	Single Element
Power	Solid State Power Supply	Solid State Power Supply	Solid State Power Supply	Solid State Power Supply	Solid State Power Supply	Solid State Power Supply
Fuse	T2 Amp	T2 Amp	T2 Amp	T2 Amp	T2 Amp	T2 Amp
Cord Storage	No	No	No	No	No	No

APPENDIX A - 2660 SPECIFICATIONS (Continued)

Model Alpha	2660 AAAB	2660 ARAP	2660 AJA			
Country	Brazil	Philippines	U.S./Canada/ Mexico			
Power Cord	Japan	Japan	United States			
Voltage/Hz	127/220/60	240/60	110/50			
Agency			UL/CSA			
Stage Size	A4	A4	A4			
Head Type	Open Triplet Varifocal	Open Triplet Varifocal	Open Triplet Varifocal			
Lamp Changer	Yes	Yes	Yes			
Color Tuning	Internal	Internal	Internal			
Post Type	Folding	Folding	Folding			
Lamp Type	FNT	FNT	EHJ			
Handle	No	No	No			
Lamp Control	No	No	No			
Lamps Installed	2	2	2			
Fresnel	Single Element	Single Element	Single Element			
Power	Solid State Power Supply	Solid State Power Supply	Solid State Power Supply			
Fuse	T4 Amp	T2 Amp	T4 Amp			
Cord Storage	No	No	No			



800-328-1371



<http://www.3M.com/meetings>

Important Notice

All statements, technical information, and recommendations related to 3M's products are based on information believed to be reliable, but the accuracy or completeness is not guaranteed. Before using this product, you must evaluate it and determine if it is suitable for your intended application. You assume all risks and liability associated with such use. Any statements related to the product which are not contained in 3M's current publications, or any contrary statements contained on your purchase order shall have no force or effect unless expressly set forth in a written agreement signed by an authorized officer of 3M.