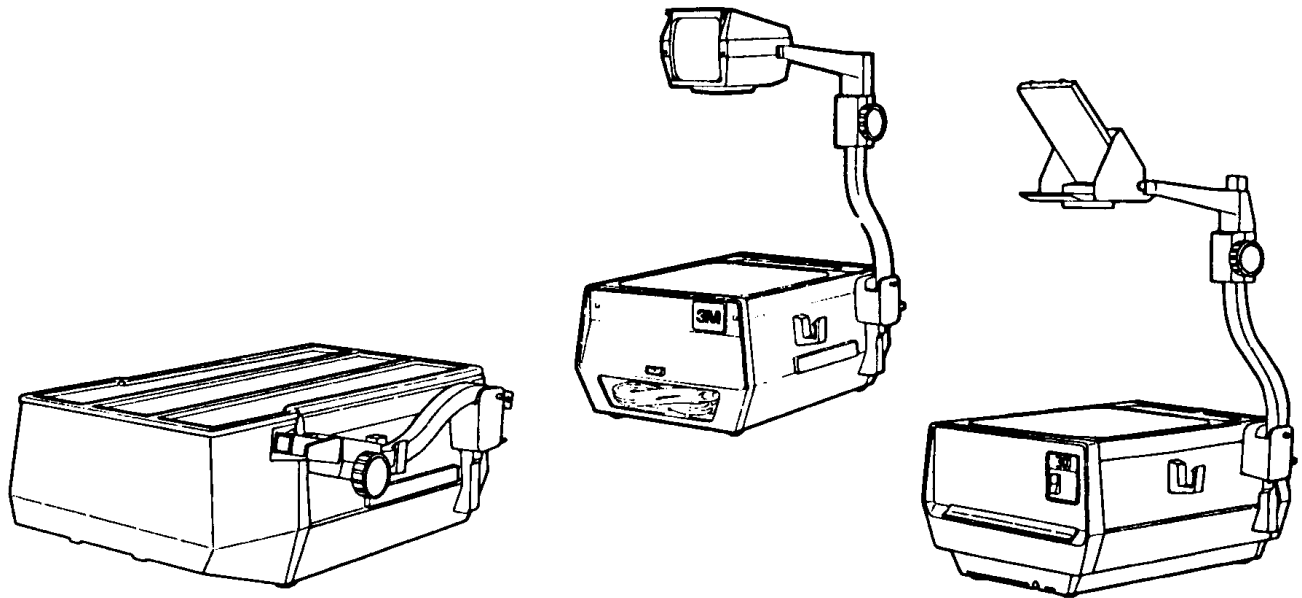


# 3M

# 213 Series Overhead Projector

## Illustrated Parts Breakdown

For: 213 313 394  
395 413 429



3M Visual Systems Division

6801 River Place Boulevard  
Austin, Texas 78726-9000

Printed in U.S.A.

©3M 6/96 78-6970-4959-7 Rev. B

---

<b>Introduction</b> .....	<b>i</b>
<b>Part Numbers</b> .....	<b>i</b>
<b>Locating and Identifying a Part</b> .....	<b>i</b>
<b>Machine Identification Plate</b> .....	<b>i</b>
Section 1 BASE ASSEMBLY .....	16
Section 2 REAR END ASSEMBLY .....	110
Section 3 LAMP CHANGER/LAMP HOLDER ASSEMBLY .....	114
Section 4 FRONT CONTROL MODULE ASSEMBLY .....	116
Section 5 PROJECTION HEAD ASSEMBLY (ARTICULATE) .....	118
Section 6 PROJECTION HEAD ASSEMBLY (NON-ARTICULATE) .....	120
Section 7 PROJECTION HEAD ASSEMBLY (OPEN) .....	121
Section 8 POST MOUNT ARM AND FOCUS ASSEMBLY .....	122
Section 9 ROLLER ATTACHMENT .....	124

**Introduction**

This Illustrated Parts Breakdown (IPB) contains the information necessary to locate and identify specific parts of the 213 Series Overhead Projector.

**Part Numbers**

All components available on a replacement basis are listed with their 3M identification number. The parts identification list opposite each illustration provides the description adequate to identify components.

**Locating and Identifying a Part**

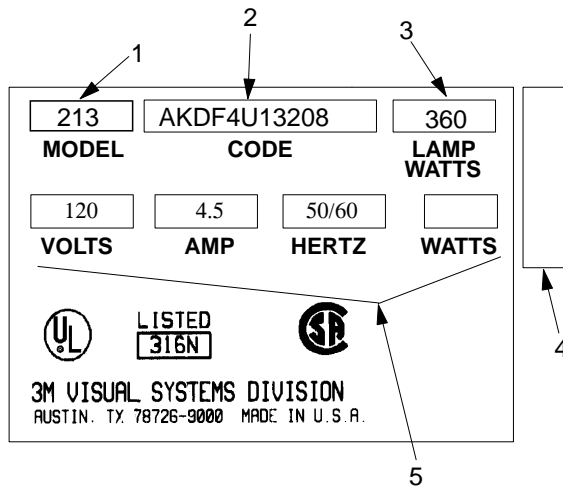
If physical appearance and general location of an item are known:

1. Use the Overview illustration to determine which section includes the item.
2. Refer to the section and locate the item on the exploded view illustration.

The part identification numbers provided in this manual are from the most current data available. Make sure part identification numbers for your component have not been amended by changes and updates made to your 213 Series Overhead Projector.

**Machine Identification Plate**

The Machine Identification Plate is located on the bottom side of each projector and lists specific information that is needed when calling for technical assistance or ordering parts.



**Figure 1-1. Machine Identification Plate**

When ordering parts, include part identification number, description, quantity and the following information:

1. Model: The specific model number of the projector.
2. Code: The code identifier of the projector. Indicates the design level, specific product characteristics, power cord or distribution specific to a country. It also identifies the date of Manufacture. See example below:

MFG Code			
Letter		Digit	
F	1988	1	Jan – Mar
H	1989	2	Apr – Jun
J	1990	3	Jul – Sep
K	1991	4	Oct – Dec

3. Lamp Watts: The electrical rating of the lamp.
4. Serial Number: The serial number assigned to this projector.
5. Volts, Amp, Hertz, Watts: The electrical rating of the projector.

For part orders contact:

Dealers:	Refer to Dealers Guide
3M Subsidiaries:	Contact Export Operations
Retail Customers:	
FAX:	1-800-852-3917
Telephone:	1-800-328-2883

**This page intentionally left blank**

---

**Table of Contents**

<b>Section No.</b>	<b>Title</b>	<b>Page</b>
	Overview .....	5
1 .....	Base Assembly .....	6
2 .....	Rear End Assembly .....	10
3 .....	Lamp Changer/Lamp Holder Assembly .....	14
4 .....	Front Control Module Assembly .....	16
5 .....	Projection Head Assembly (Articulate) .....	18
6 .....	Projection Head Assembly (Non-Articulate) .....	20
7 .....	Projection Head Assembly (Open) .....	21
8 .....	Post Mount Arm And Focus Assembly .....	22
9 .....	Roller Attachment .....	24

**IMPORTANT NOTICE**

**3M reserves the right to sell or furnish NEW OR RECONDITIONED PARTS.  
 New and reconditioned parts are covered by the same 3M new parts limited warranty.  
 Hardware items are subject to availability and may need to be purchased locally.**

**The 213 Series Overhead Projectors are discontinued models. Therefore, all parts are subject to availability.**

## Quick Reference Parts Index

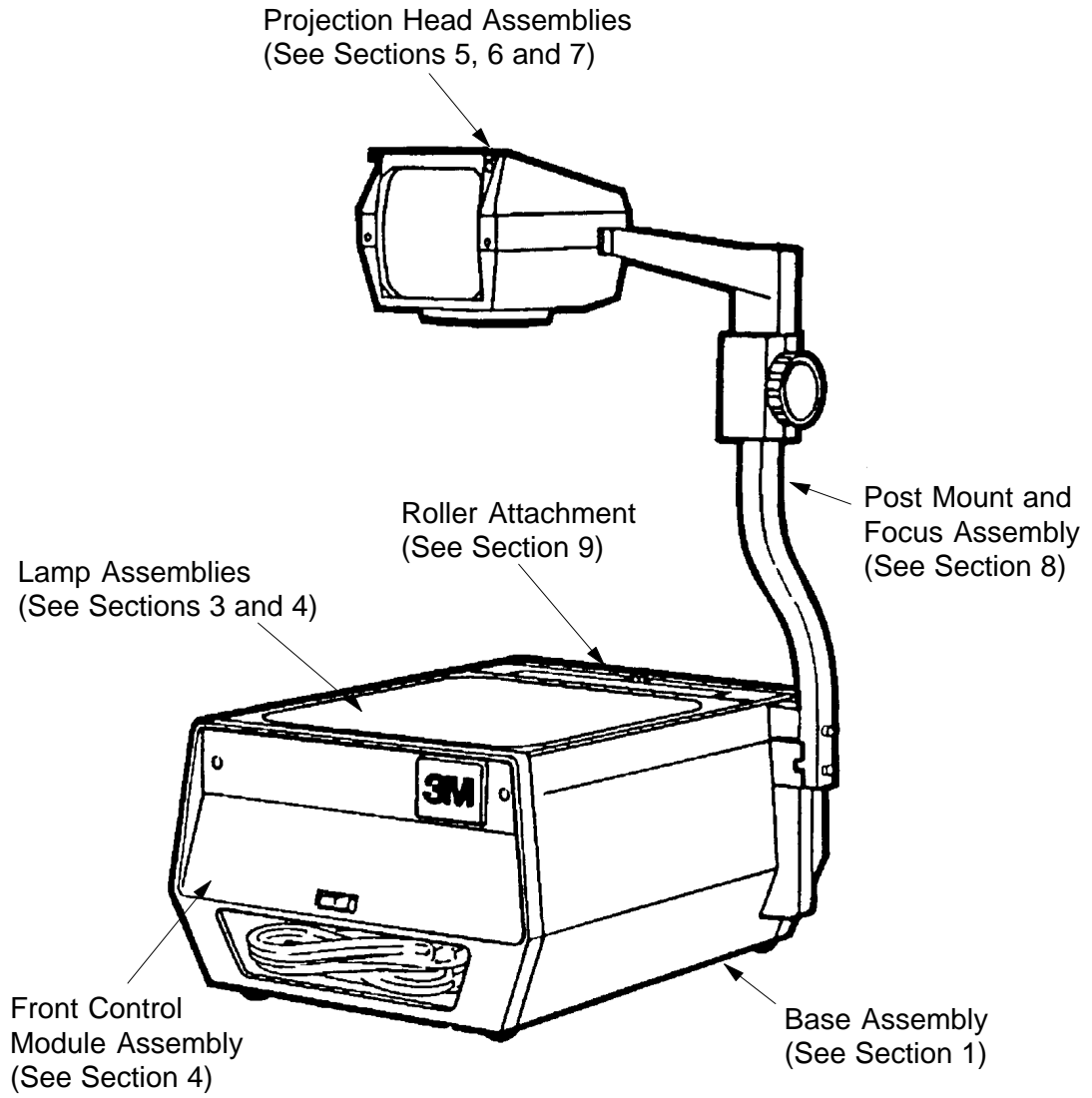
Description	Part Number	Section No.	Item No.
BLADE, Fan	78-8011-1277-8	2	7
COVER ASSEMBLY, Top, Small Body (ADA, AKDE, 313, 394, 395, 413) (Includes items 20 through 31 and 38)	Not Available	2	20A
COVER ASSEMBLY, Top, Large Body (BAA, BCC, BLF, 429) (Includes items 20 through 31 and 38)	78-8014-7439-2	2	20B
COVER, Travel, US, Small Body (Articulate Projection Head only. For AKDE and 395 Models Only)	78-8015-2491-5	1	42A
COVER, Travel, OUS, Large Body (Articulate Projection Head Only)	Not Available	1	42B
FOOT REPLACEMENT KIT (Includes 4 feet and 4 self-tapping screws)	78-8014-8806-1	1	2
FUSE, 4 Amp (All Model 213's have 4 amp fuses. Special projectors such as the Navy DKD & HCDU are double fused)	78-8033-0877-0	1	25
FUSE HOLDER (Optional)	78-8012-7733-2	1	2
KNOB, Changer	78-8011-1266-1	2	35
KNOB, Latch	78-8011-1240-6	2	22
KNOB AND ROLLER ASSEMBLY	78-8015-2358-6	8	20A
LAMP, ENX, 360W, 82V	78-8011-1186-1	3	20A
LAMP, ERV, 320W, 36V	Not Available	3	20B
LAMP, EPW, 360W 100V	78-8011-1199-4	3	20C
LAMP CARRIAGE ASSEMBLY, Standard Aperture (All 213 Models Including Early 313's)	78-8011-1222-4	3	6A
LAMP CARRIAGE ASSEMBLY (313, 394, 395)	78-8052-8257-7	3	6B
LAMP HOLDER, 36V Dual & Single	78-8015-2490-7	3	10A
LAMP HOLDER, 82V & 100V Dual & Single	78-8015-2463-4	3	10B
LENS, Entrance, Bottom, Articulate, 355MM (14")	78-8011-1440-2	5	12A
LENS, Entrance, Bottom, Articulate, 293MM (11.5")	78-8014-8951-5	5	12B
LENS, Entrance and Exit, Non-Articulate, 355MM (14")	78-8704-6039-7	6	4A
LENS, Entrance, Non-Articulate, 293MM (11.5")	78-8014-8951-5	6	4B
LENS, Exit, Front, Articulate, Meniscus, 355MM (14")	78-8014-8812-9	5	5A
LENS, Exit, Front, Articulate, Flat Glass, 293MM (11.5")	78-8054-1517-7	5	5B
LENS, Exit, Non-Articulate, 293MM (11.5")	Not Available	6	4C
LENS ASSEMBLY, Open, Triplet, 327MM (12.9")	78-8014-8947-3	7	3A
LENS ASSEMBLY, Open, Single, 293MM (11.5" For Wide Angle)	78-8014-8951-5	7	3B
MIRROR AND MOUNTING KIT (Includes mirror and all mounting components)	78-8014-8805-3	1	9
MOTOR, 100V	78-8011-1318-0	2	4A
MOTOR, 120V	78-8011-1193-7	2	4B
MOTOR, 220V/240V	78-8011-1317-2	2	4C

## Quick Reference Parts Index (Continued)

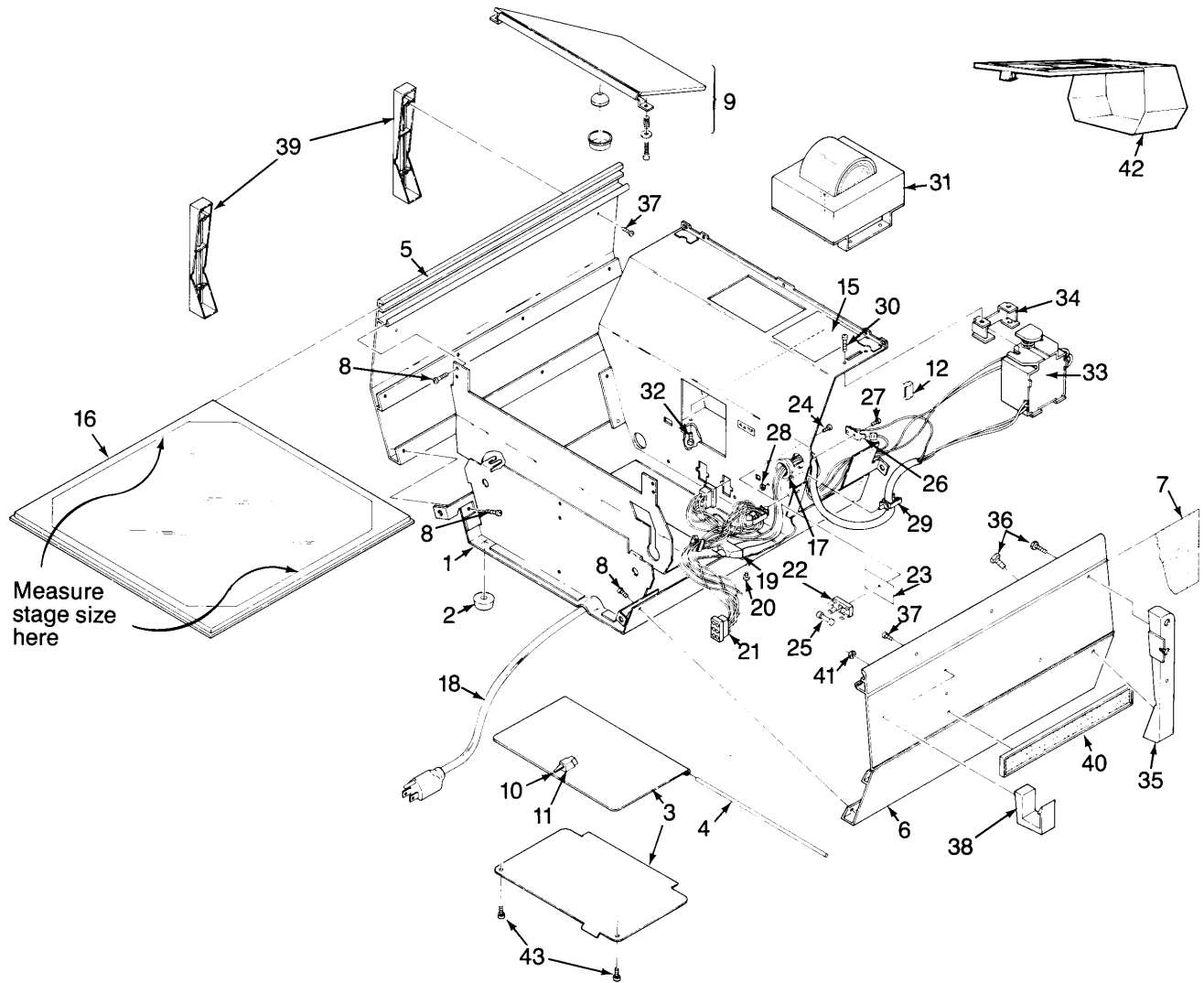
Description	Part Number	Section Item	
		No.	No.
OPTICAL STAGE ASSEMBLY, Low Glare, Radial, Large Body Units, 11 1/4" (285MM) (For CCC, CED, CLF, CJD, CAA) . . . . .	78-8052-8467-2 . . . . .	1 . . .	16A
OPTICAL STAGE ASSEMBLY, Low Glare, Radial, Large Body Units, 10 1/2" (267MM) (For BAA, BCC, BED, BLF, 429) . . . . .	78-8052-8469-8 . . . . .	1 . . .	16B
OPTICAL STAGE ASSEMBLY, Low Glare, Radial, Small Body Units, 10" (254MM) (For ADA, AKDE, DKD, 313, 395, 413) . . . . .	78-8052-8468-0 . . . . .	1 . . .	16C
OUTLET, Accessory, 120V Unit Only . . . . .	78-8011-1194-5 . . . . .	4 . . . .	21
POWER CORD, United States . . . . .	78-8011-1158-0 . . . . .	1 . . .	18E
RECTIFIER, In-line, With Sleeve, Before S/N 628842 . . . . .	78-8052-8351-8 . . . . .	2 . . .	14A
RECTIFIER, In-line, Without Sleeve, Before S/N 628842 . . . . .	78-8064-1834-5 . . . . .	2 . . .	14B
RECTIFIER, Square, After Serial No. 628842 . . . . .	78-8064-1891-5 . . . . .	2 . . .	14C
RESISTOR, Dimmer, 1.2 Ohm, 120V . . . . .	78-8011-1198-6 . . . . .	2 . . .	12A
RESISTOR, 1.75 Ohm (For 100V Models) . . . . .	78-8015-2386-7 . . . . .	2 . . .	12B
SWITCH, Bar . . . . .	78-8011-1175-4 . . . . .	4 . . . .	4
SWITCH, Dimmer, 100/120V Unit . . . . .	Not Available . . . . .	4 . . .	20A
SWITCH, Dimmer, 220/240V Unit . . . . .	78-8011-1195-2 . . . . .	4 . . .	20B
SWITCH, Insulator . . . . .	78-8011-1192-9 . . . . .	3 . . . .	15
SWITCH, Interlock . . . . .	78-8015-5038-1 . . . . .	1 . . . .	33
SWITCH, On-Off . . . . .	78-8014-8833-5 . . . . .	4 . . . .	10
SWITCH, Power, Rocker (313, 394, 395) . . . . .	78-8057-4158-0 . . . . .	4 . . . .	25
SWITCH, Sensing . . . . .	78-8014-8833-5 . . . . .	3 . . . .	14
THERMOSTAT (313, 394, 395) . . . . .	78-8011-1191-1 . . . . .	3 . . .	21C
THERMOSTAT ASSEMBLY, Safety, Single Lamp Unit (All 213 Models Including Early 313's) . . . . .	78-8014-9075-2 . . . . .	3 . . .	21A
THERMOSTAT ASSEMBLY, Safety, Dual Lamp Unit . . . . .	78-8014-9074-5 . . . . .	3 . . .	21B
TRANSFORMER ASSEMBLY, 220/240V to 82V . . . . .	Not Available . . . . .	1 . . .	31A
TRANSFORMER ASSEMBLY, 220/240V to 36V (Auto) . . . . .	Not Available . . . . .	1 . . .	31B
TRANSFORMER ASSEMBLY, 120V (For Navy Only) . . . . .	Not Available . . . . .	1 . . .	31C
WIRE HARNESS, Body . . . . .	Not Available . . . . .	1 . . . .	21
WIRE HARNESS, Rear, Single Lamp . . . . .	78-8014-8908-5 . . . . .	2 . . .	33A
WIRE HARNESS WITH LAMP CHANGER, Rear, Dual Lamp . . . . .	78-8014-8910-1 . . . . .	2 . . .	33B

**This page intentionally left blank**

OVERVIEW



Section 1  
BASE ASSEMBLY



**Section 1**  
**BASE ASSEMBLY**

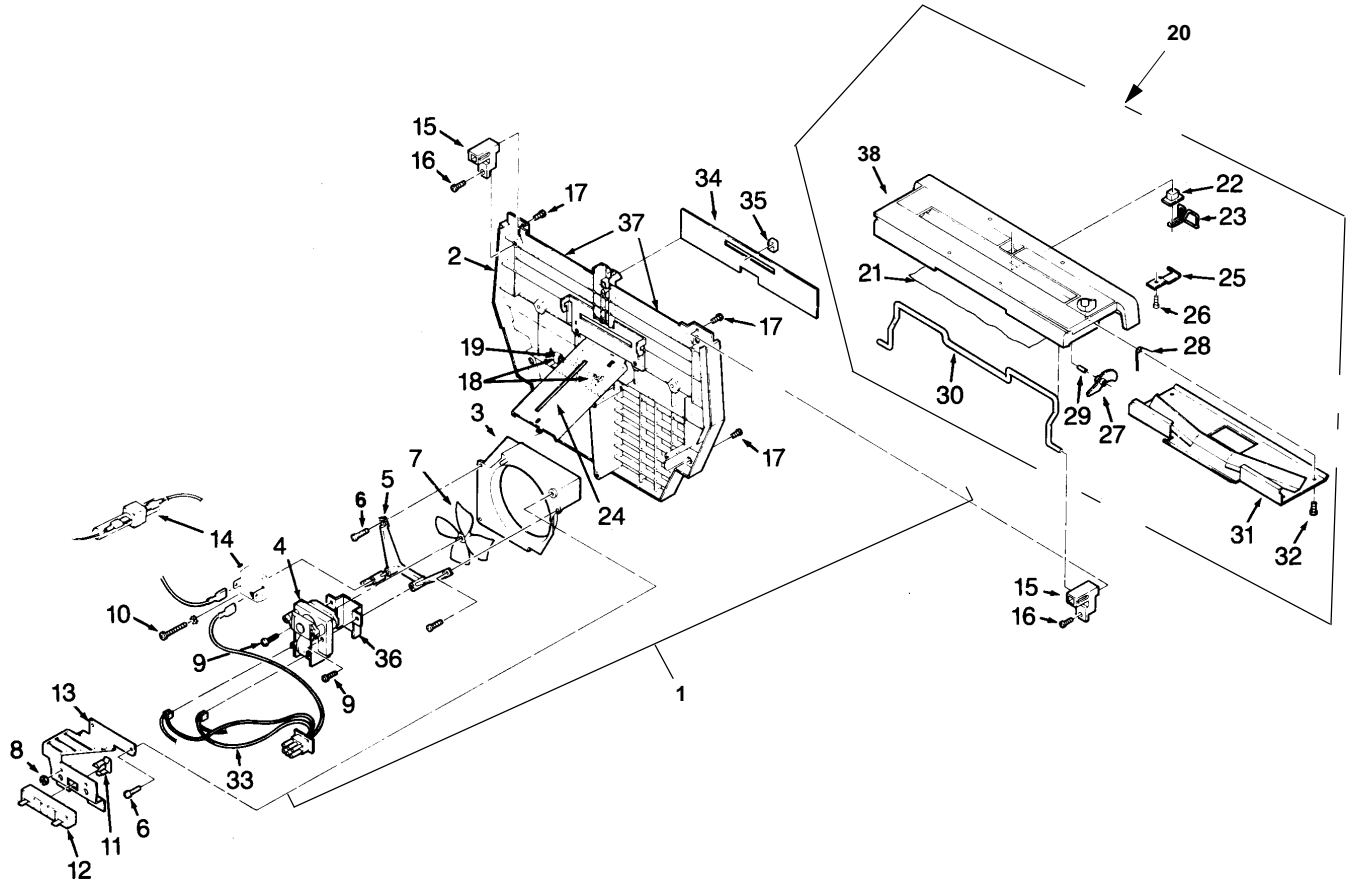
Item No.	Part Number	Description	Qty
1	Not Available	BASE, BRACKET, FOOT AND BAFFLE ASSEMBLY	
2	78-8014-8806-1	FOOT REPLACEMENT KIT (Includes 4 feet and 4 self-tapping screws)	1
3	78-8014-8808-7	CORD COVER DOOR ASSEMBLY (Includes pin and items 10 and 11)	1
4	78-8014-8915-0	COVER DOOR AND HINGE ASSEMBLY (Includes item 4, pin and item 3, door)	1
5	Not Available	EXTRUSION, Left Side (Beige)	
6	Not Available	EXTRUSION, Right Side (Beige)	
7	78-8011-1304-0	TRIM, Dinoc, Side (Optional)	2
8	26-1000-6745-8	SCREW, Pan Head, Taptite, M4 X 7 X 8	4
9	78-8014-8805-3	MIRROR AND MOUNTING KIT (Includes mirror and all mounting components)	1
10	78-8003-8952-6	LATCH DOOR	1
11	78-8011-1309-9	KNOB DOOR	1
12	Purchase Locally	CLIP	1
13	Not Used		
14	Not Used		
15A	78-8011-1421-2	LABEL, Lamp Change, 82V	1
15B	Not Available	LABEL, Lamp Change, 36V	1
15C	Not Available	LABEL, Lamp Change, 100V	1
16A	78-8052-8467-2	OPTICAL STAGE ASSEMBLY, Low Glare, Radial, Large Body Units, 11.25" (285MM) (For CCC, CED, CLF, CJD, CAA)	1
16B	78-8052-8469-8	OPTICAL STAGE ASSEMBLY, Low Glare, Radial, Large Body Units, 10.5" (267MM) (For BAA, BCC, BED, BLF, 429)	1
16C	78-8052-8468-0	OPTICAL STAGE ASSEMBLY, Low Glare, Radial, Small Body Units, 10" (254MM) (For ADA, AKDE, DKD, 313, 395, 413)	1
17	78-8003-8731-4	BUSHING	1
18A	Not Available	POWER CORD, Australia	1
18B	Not Available	POWER CORD, France	1
18C	Not Available	POWER CORD, Germany	1
18D	Not Available	POWER CORD, United Kingdom	1
18E	78-8011-1158-0	POWER CORD, United States	1
18F	Not Available	POWER CORD, South Africa	1
18G	Not Available	POWER CORD, Swiss	1
19	DY-1160-2020-6	BUSHING, Strain Relief	1
20	Purchase Locally	SCREW, Plastite, 6-19 x 1	1
21	Not Available	WIRE HARNESS, Body	1
22	DY-9920-0420-9	FUSE HOLDER (Optional)	1
23	78-8011-1303-2	INSULATOR (For optional fuse holder)	1
24	Not Available	SCREW, M3 X .5 X 6 (Optional) (Use 26-1008-5596-9)	1

**This page intentionally left blank**

**Section 1**  
**BASE ASSEMBLY (Continued)**

Item No.	Part Number	Description	Qty
25	78-8033-0877-0	FUSE, 4 Amp (All Model 213's have 4 amp fuses. Special projectors such as the Navy DKD & HCDU are double fused)	1
26	Not Available	GROUND TERMINAL	1
27	78-8010-7255-0	SCREW, M4 X .7 X 6	1
28	Purchase Locally	NUT, M4	1
29	Not Available	CABLE CLAMP	1
30	78-8010-7258-4	SCREW, M4 X .7 X 20	2
31A	Not Available	TRANSFORMER ASSEMBLY, 220/240V to 82V	1
31B	Not Available	TRANSFORMER ASSEMBLY, 220/240V to 36V (Auto)	1
31C	Not Available	TRANSFORMER ASSEMBLY, 120V (For Navy Only)	1
32	78-8010-7354-1	SCREW, M4 X 7 X 6	4
33	78-8015-5038-1	SWITCH, Interlock	1
34	78-8015-2438-6	BRACKET, Switch Guard	1
35	78-8011-1271-1	POST MOUNT, Beige	1
36	26-1002-7511-9	SCREW, M6 X 1.0 X 12	2
37	26-1000-0336-2	SCREW, 6-19 X 3/8	3
38	78-8052-8283-3	LATCH, Post	1
39	78-8011-1260-4	FOOT, Side	2
40	78-8011-1218-2	HANDLE (Has 2 metal brackets and 2 bolts)	1
41	18-1749-2216-3	NUT, 10-32	2
42A	78-8015-2491-5	TRAVEL COVER, US, Small Body (Articulate Projection Head only. For AKDE and 395 Models Only)	1
42B	Not Available	TRAVEL COVER, OUS, Large Body (Articulate Projection Head Only)	1
43	26-1000-6745-8	SCREW, Pan Hd, Taptite, M4 X 7 X 8	2

Section 2  
REAR END ASSEMBLY



**Section 2**  
**REAR END ASSEMBLY**

Item No.	Part Number	Description	Qty
1A	78-8014-7396-4	REAR END CAP, Small Body, Single Lamp	1
1B	Not Available	REAR END CAP, Small Body, Dual Lamp	1
1C	Not Available	REAR END CAP, Large Body, Single Lamp	1
1D	78-8014-7399-8	REAR END CAP, Large Body, Dual Lamp	1
1E	Not Available	REAR END CAP, Small Body, Single Lamp (313)	1
1F	Not Available	REAR END CAP, Small Body, Dual Lamp (294, 395)	1
2A	78-8015-2339-6	REAR END CAP, Small Body, Single Lamp (See Note 1)	1
2B	78-8015-2341-2	REAR END CAP, Large Body, Single Lamp (See Note 1)	1
2C	78-8015-2343-8	REAR END CAP, Small Body, Single Lamp (4130) (See Note 1)	1
2D	78-8015-2340-4	REAR END CAP, Lamp Changer, Small Body, Dual Lamp (See Note 1)	1
2E	78-8015-2342-0	REAR END CAP, Lamp Changer, Large Body, Dual Lamp (See Note 1)	1
3	78-8011-1255-4	SHROUD, Fan	1
4A	78-8011-1318-0	MOTOR, 100V	1
4B	78-8011-1193-7	MOTOR, 120V	1
4C	78-8011-1317-2	MOTOR, 220V/240V	1
5	78-8011-1336-2	MOTOR MOUNT	1
6	26-1002-4859-5	SCREW, 6-20 X 5/8	2
7	78-8011-1277-8	BLADE, Fan	1
8	18-1728-1516-1	NUT, 6-32	2
9	78-8657-9417-2	SCREW, 6-32 X 5/8	2
10	Not Available	SCREW, 1"	1
11	78-8033-1666-6	CLIP	1
12A	78-8011-1198-6	RESISTOR, Dimmer, 1.2 Ohm, 120V	1
12B	78-8015-2386-7	RESISTOR, 1.75 Ohm (For 100V Models)	1
13	78-8014-9087-7	SHIELD, Light (Not used in 300 Models)	1
14A	78-8052-8351-8	RECTIFIER, In-line, With Sleeve, Before S/N 628842	1
14B	78-8064-1834-5	RECTIFIER, In-line, Without Sleeve, Before S/N 628842	1
14C	78-8073-6970-3	RECTIFIER, Square, After Serial No. 628842	1
15A	78-8014-9097-6	BRACKET, Hinge, Small Body	1
15B	78-8014-9093-5	BRACKET, Hinge, Large Body	1
16	26-1000-0336-2	SCREW, 6 X 19 X 3/8	1
17	Purchase Locally	SCREW, M4 X .7 X 22	4
18	Not Available	CABLE CLAMP (Single Lamp)	2
19	78-8431-5402-8	CABLE CLAMP (Lamp Changer)	1
20A	Not Available	COVER ASSEMBLY, Top, Small Body (ADA, AKDE, 313, 394, 395, 413) (Includes items 20 through 31 and 38)	1
20B	78-8014-7439-2	COVER ASSEMBLY, Top, Large Body (BAA, BCC, BLF, 429) (Includes items 20 through 31 and 38)	1
21A	78-8011-1372-7	TAPE, Heat Shield, Small Body Units	1
21B	78-8011-1375-0	TAPE, Heat Shield, Large Body Units	1
22	78-8011-1240-6	KNOB, Latch	1
23	78-8011-1236-4	LATCH, Wire Form	1

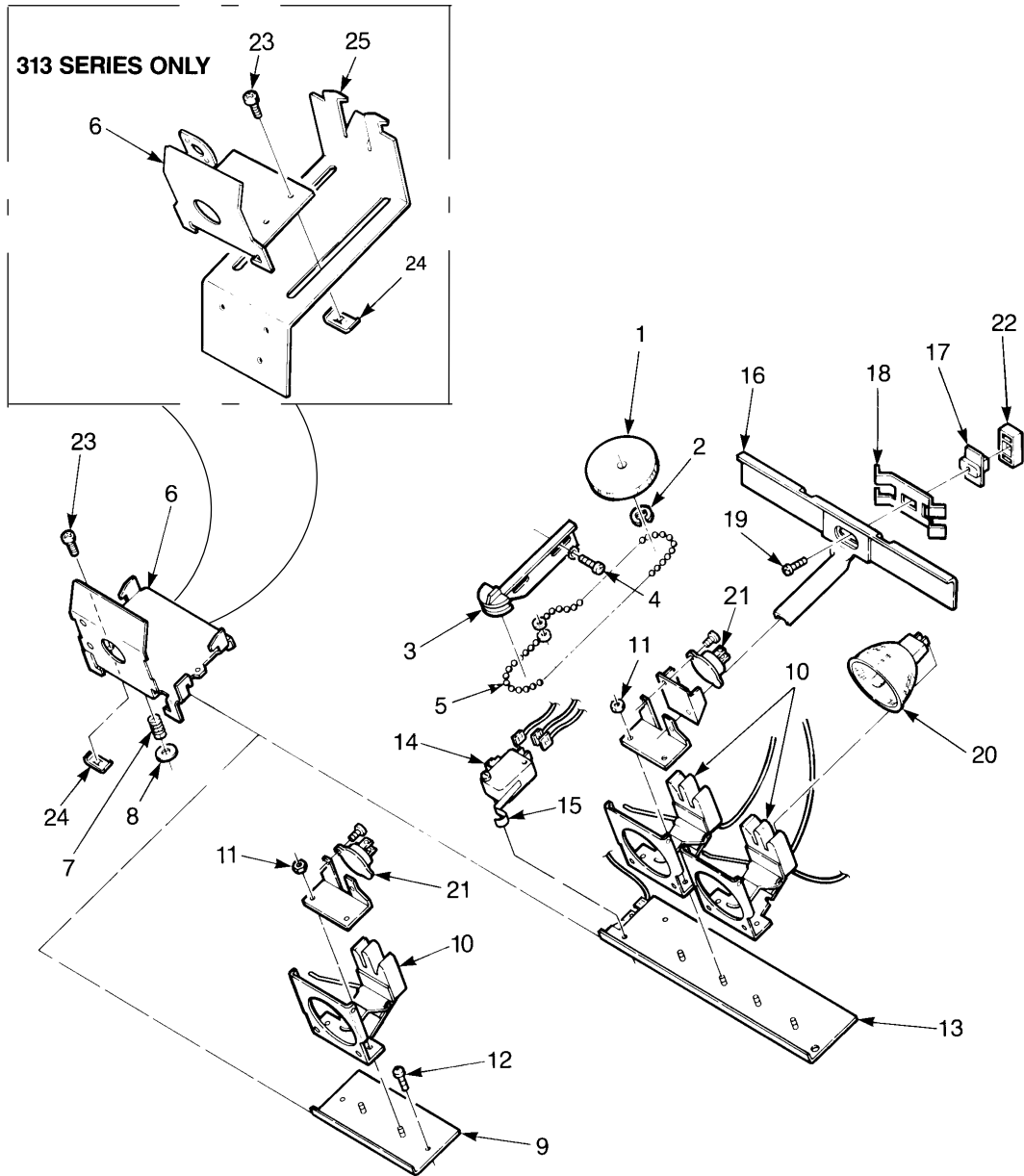
**Note 1.** Includes items 2, 24, 34, and 37. Also includes items 1 and 2 from Section 3, Lamp Changer/Lamp Holder Assembly.

**This page intentionally left blank**

**Section 2**  
**REAR END ASSEMBLY (Continued)**

Item No.	Part Number	Description	Qty
24	78-8011-1455-0	BRACKET, Light Source	1
25	78-8011-1281-0	SPRING, Latch	1
26	26-1000-0337-0	SCREW, 6-19 X 3/8, Pan Head	1
27	78-8011-1244-8	ACTUATOR, Interlock	1
28	78-8011-1245-5	TORSION SPRING	1
29	78-8032-2795-4	PIN-KAYDON AA-174	1
30A	78-8014-8980-4	HINGE, Wire Form, Small Body	1
30B	78-8014-8979-6	HINGE, Wire Form, Large Body	1
31A	78-8011-1301-6	PLATE, Hinge, Small Body	1
31B	78-8011-1300-8	PLATE, Hinge, Large Body	1
32	26-1000-0337-0	SCREW, 6-19 X 3/8 PT	1
33A	78-8014-8908-5	WIRE HARNESS, Rear, Single Lamp	1
33B	78-8014-8910-1	WIRE HARNESS WITH LAMP CHANGER, Rear, Dual Lamp	1
34A	78-8015-2453-5	NAMEPLATE, Rear, Single Lamp (ADA, 413)	1
34B	78-8052-8240-3	NAMEPLATE, Rear, Single Lamp (313)	1
34C	78-8015-2454-3	NAMEPLATE, Rear, Lamp Changer Unit (AKDE)	1
34D	78-8052-8276-7	NAMEPLATE, Rear, Lamp Changer Unit (394)	1
34E	78-8052-8266-8	NAMEPLATE, Rear, Lamp Changer Unit (395)	1
35	78-8011-1266-1	KNOB, Changer	1
36	78-8015-2466-7	SHIELD, Motor	1
37	Not Available	SHIELD, Heat (2 pieces Aluminum tape)	1
38A	78-8014-8943-2	COVER, Top, Small Body (ADA, AKDE, 313, 394, 395)	1
38B	78-8014-9073-7	COVER, Top, Small Body (413)	1
38C	78-8014-8944-0	COVER, Top, Large Body (BAA, BCC, BLF, 429)	1

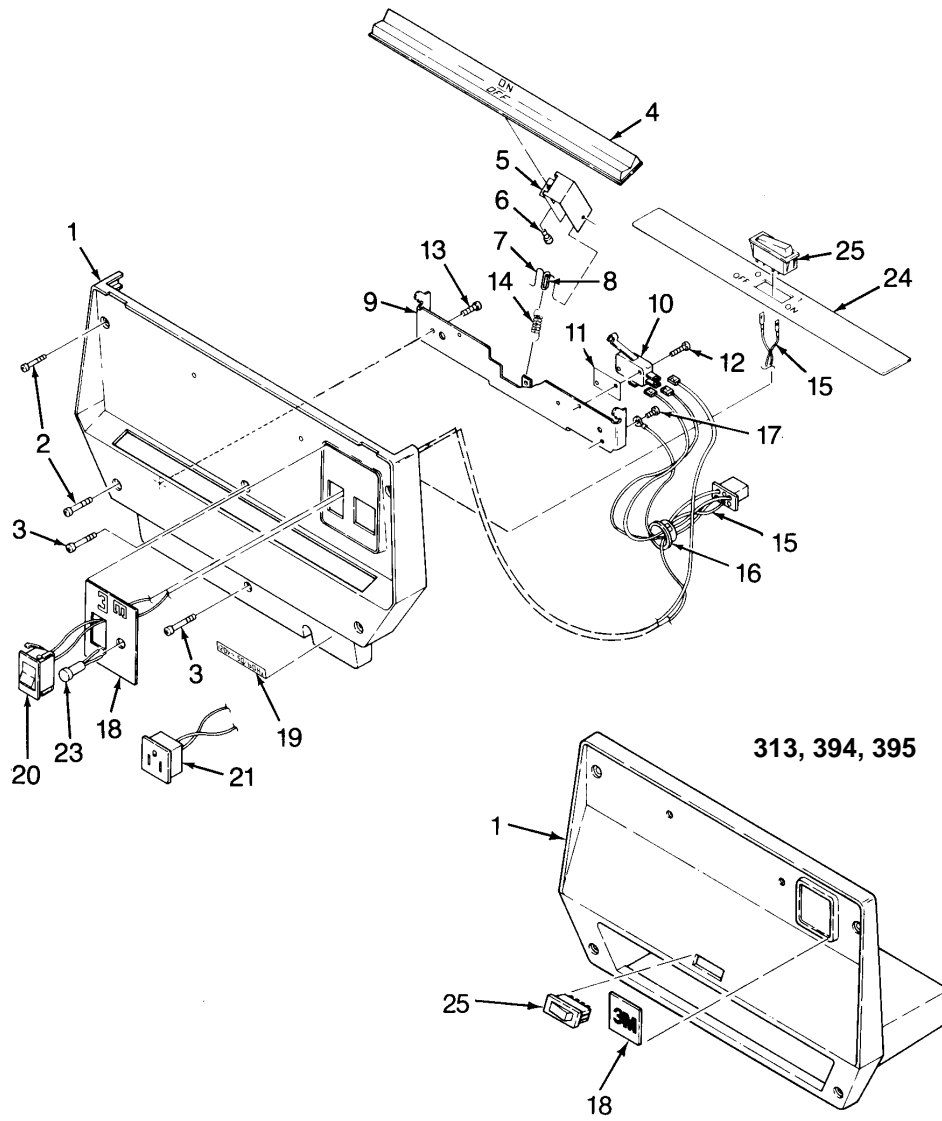
Section 3  
LAMP CHANGER/LAMP HOLDER ASSEMBLY



**Section 3**  
**LAMP CHANGER/LAMP HOLDER ASSEMBLY**

Item No.	Part Number	Description	Qty
1	78-8011-1340-4	.. KNOB COLOR TUNING (See items 1 and 2, Section 2)	1
2	78-8656-4001-1	.. RETAINING RING	1
3	78-8011-1239-8	.. IDLER, Slide	1
4	26-1000-6745-8	.. SCREW, M4 X .7 X 8, Taptite	1
5	78-8011-1227-3	.. CHAIN, Bead	1
6A	78-8011-1222-4	.. LAMP CARRIAGE ASSEMBLY, Standard Aperture (All 213 Models Including Early 313's)	1
6B	78-8052-8257-7	.. LAMP CARRIAGE ASSEMBLY (313, 394, 395)	1
7	78-8014-9017-4	.. SPRING	1
8	Not Available	.. WASHER	1
9	78-8014-8813-7	.. LAMP HOLDER ASSEMBLY PLATE, Single Lamp	1
10A	78-8015-2490-7	.. LAMP HOLDER, 36V Dual & Single	1
10B	78-8015-2463-4	.. LAMP HOLDER, 82V & 100V Dual & Single	1
11	78-8010-7415-0	.. NUT, M3 X .5	2
12	Purchase Locally	.. SCREW, M3 X .5 X 6, Taptite	2
13	78-8011-1454-3	.. CHANGER SLIDE ASSEMBLY	1
14	78-8014-8833-5	.. SWITCH, Sensing	1
15	78-8011-1192-9	.. SWITCH, Insulator	1
16	78-8011-1224-0	.. YOKE, Changer	1
17	Not Used		
18	Not Used		
19	26-1000-0336-2	.. SCREW, 6-19 X 3/8 PT	1
20A	78-8011-1186-1	.. LAMP, ENX, 360W, 82V	1
20B	Not Available	.. LAMP, ERV, 320W, 36V	1
20C	78-8011-1199-4	.. LAMP, EPW, 360W 100V	1
21A	78-8014-9075-2	.. THERMOSTAT ASSEMBLY, Safety, Single Lamp Unit (All 213 Models Including Early 313's)	1
21B	78-8014-9074-5	.. THERMOSTAT ASSEMBLY, Safety, Dual Lamp Unit	1
21C	78-8011-1191-1	.. THERMOSTAT (313, 394, 395)	1
22	Not Used		
23	26-1005-0525-9	.. SCREW, Sems 6-32 X 3/8 (313, 394, 395)	1
24	Not Available	.. NUT, Clip Tinnerman (313, 394, 395)	1
25	Not Available	.. LIGHT SOURCE BRACKET (313)	1

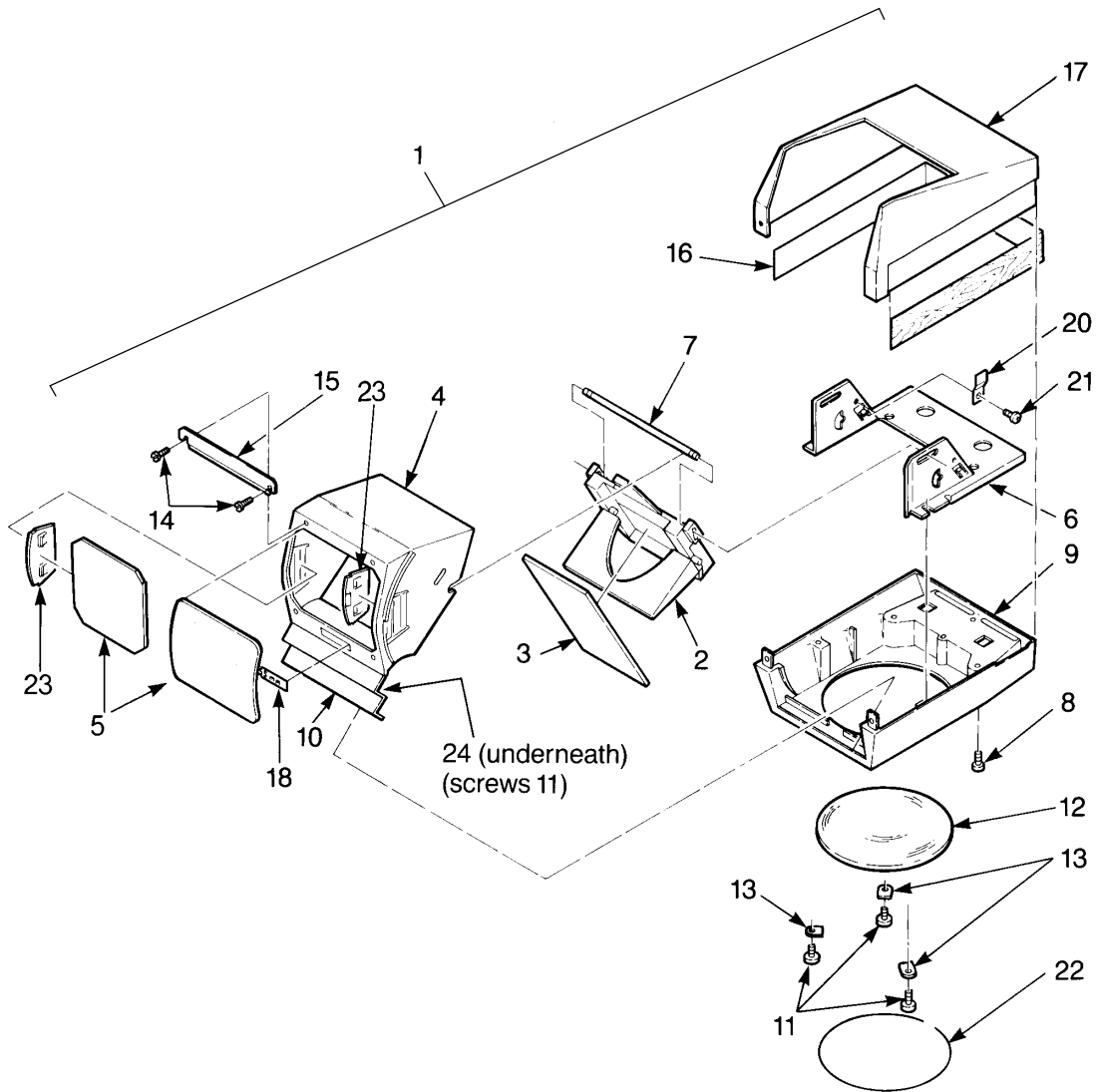
Section 4  
FRONT CONTROL MODULE ASSEMBLY



**Section 4**  
**FRONT CONTROL MODULE ASSEMBLY**

Item No.	Part Number	Description	Qty
1A	78-8014-9072-9	.. FRONT END CAP, Small Body, Beige (413)	1
1B	78-8011-1170-5	.. FRONT END CAP, Small Body, Brown	1
1C	Not Available	.. FRONT END CAP, Small Body (313, 394, 395)	1
1D	Not Available	.. FRONT END CAP, Large Body (BAA, BCC, BLF, CLF, 429) After	1
2	Not Available	.. SCREW, M4 X 7 X 22 (Use 26-1000-0340-4)	4
3	26-1000-0340-4	.. SCREW, M4 X 7 X 35	2
4	78-8011-1175-4	.. SWITCH, Bar	1
5	78-8011-1313-1	.. BRACKET, SPRING	1
6	26-0000-1165-5	.. SCREW, 6-19 X 3/8, Plastite	1
7	78-8011-1319-8	.. YOKE, Wire	1
8	78-8011-1480-8	.. CUSHION YOKE	2
9	Not Available	.. BRACKET, Switch	1
10	78-8014-8833-5	.. SWITCH, On-Off	1
11	78-8011-1192-9	.. SHIELD, Switch	1
12	78-8032-0428-4	.. SCREW, M3 X .5 X 16	2
13	26-1000-0336-2	.. SCREW, 6-19 X 3/8	2
14	78-8011-1321-4	.. SPRING	1
15	Not Available	.. WIRE HARNESS, Control Module	1
16	78-8003-8731-4	.. HEYCO BUSHING	1
17	26-1008-5596-9	.. SCREW (Grounding) M3 X .5 X 6	1
18A	78-8052-8286-6	.. NAMEPLATE, Front End Cap (313 Before S/N 917860)	1
18B	Not Available	.. NAMEPLATE, Front End Cap (313, 394, 395)	1
18C	Not Available	.. NAMEPLATE, Front End Cap (413)	1
18D	Not Available	.. NAMEPLATE, Front End Cap (429)	1
18E	Not Available	.. NAMEPLATE, Front End Cap, Standard (No Option), M213	1
18F	Not Available	.. NAMEPLATE, Front End Cap, Dimmer Only, M213	1
18G	78-8015-2458-4	.. NAMEPLATE, Front End Cap, Dimmer & Indicator, M213	1
18H	Not Available	.. NAMEPLATE, Front End Cap, Indicator Only, M213	1
19A	Not Available	.. LABEL VOLTAGE, 100V Unit	1
19B	Not Available	.. LABEL VOLTAGE, 120V Unit	1
19C	Not Available	.. LABEL VOLTAGE, 220V Unit	1
19D	Not Available	.. LABEL VOLTAGE, 240V Unit	1
20A	Not Available	.. SWITCH, Dimmer, 100/120V Unit	1
20B	78-8011-1195-2	.. SWITCH, Dimmer, 220/240V Unit	1
21	78-8011-1194-5	.. OUTLET, Accessory, 120V Unit Only	1
22	Not Used		
23A	78-8014-8881-4	.. LAMP INDICATOR, 100/120V Unit	1
23B	Not Available	.. LAMP INDICATOR, 220/240V Unit	1
24	78-8014-8950-7	.. SWITCH PANEL	1
25	78-8057-4158-0	.. SWITCH, Rocker, Power (313, 394, 395)	1

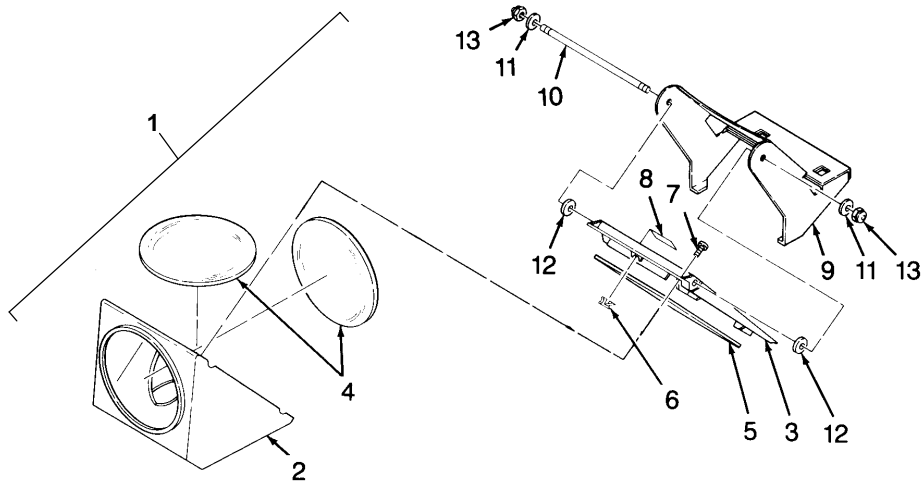
Section 5  
PROJECTION HEAD ASSEMBLY (ARTICULATE)



**Section 5**  
**PROJECTION HEAD ASSEMBLY (ARTICULATE)**

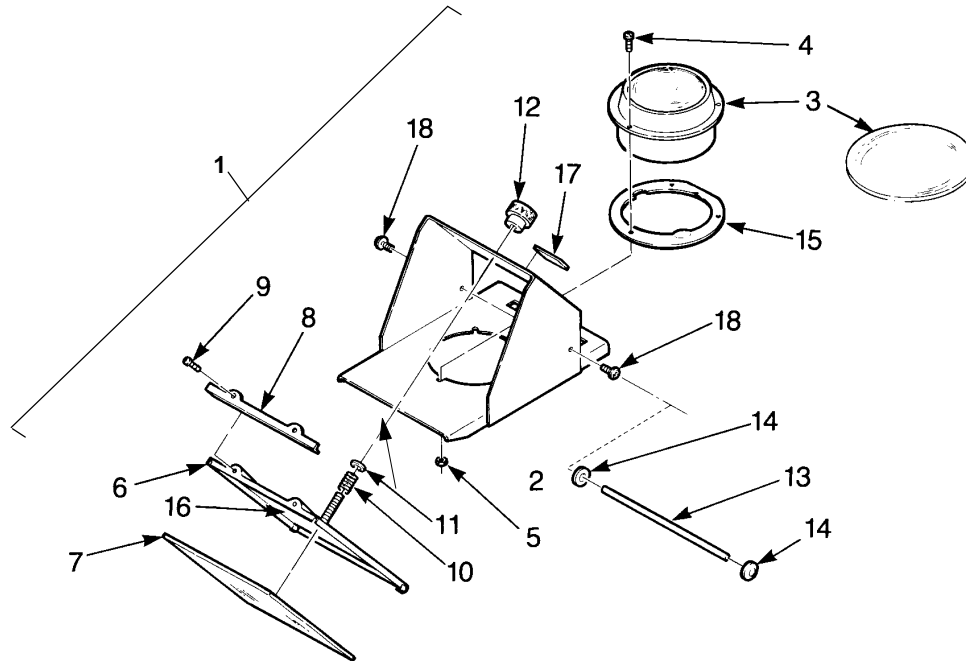
Item No.	Part Number	Description	Qty
1A	78-8011-1426-1	PROJECTION HEAD ASSEMBLY, Articulate, 355MM (14")	1
1B	78-8014-8997-8	PROJECTION HEAD ASSEMBLY, Articulate, 293MM (11.5" Wide Angle)	1
2	78-8011-1436-0	MIRROR HOLDER	1
3	78-8011-1444-4	MIRROR	1
4	78-8011-1442-8	HOUSING, Front, Exit Lens	1
5A	78-8014-8812-9	LENS, Exit, Front, Meniscus, 355MM (14")	2
5B	78-8054-1517-7	LENS, Exit, Front, Flat Glass, 293MM (11.5")	2
6	78-8014-8989-5	PIVOT, Support Bracket	1
7	78-8011-1445-1	PIVOT RUN	1
8A	26-1002-4859-5	SCREW PT, Bottom, 355MM (14"), 6.20 X 5/8, Self Tapping	1
8B	26-1000-0336-2	SCREW PT, Bottom, 293MM (11.5"), 6.20 X 3/8, Self Tapping	1
9	78-8011-1443-6	BASE HEAD	1
10A	78-8054-1083-0	SHIELD, Dust (Ivory)	1
10B	78-8064-1797-4	SHIELD, Dust (Black)	1
11	26-1000-0684-5	SCREW, 4.20 X 1/4, Taptite	3
12A	78-8011-1440-2	LENS, Entrance, Bottom, 355MM (14")	1
12B	78-8014-8951-5	LENS, Entrance, Bottom, 293MM (11.5")	1
13A	78-8014-9064-6	CLIP, Lens, 355MM (14")	3
13B	78-8052-8268-4	CLIP, Lens, 293MM (11.5")	3
14	26-1000-0684-5	SCREW (293MM) 4-20 X 5/16, Taptite	4
15A	78-8014-8993-7	BRACKET RETAINER [For 293MM (11.5")] Exit Lens Only, Top	1
15B	78-8014-8992-9	BRACKET RETAINER [For 293MM (11.5")] Exit Lens Only, Bottom	1
16	78-8011-1492-3	TRIM, Dinoc	1
17	78-8011-1439-4	COVER, Head	1
18	Not Available	LABEL, Focal Length [293MM (11.5") Only]	1
19	Not Available	LABEL, 3M Logo (Not Shown)	1
20	78-8014-8817-8	SPRING, Tension	1
21	26-1008-5596-9	SCREW (SPRING), M3 X .5 X 6, Taptite	1
22	Not Used		
23	78-8054-1696-9	CLIP, Lens [293MM (11.5") Only]	2
24	78-8014-8885-5	CLAMP, Dust Shield	1

**Section 6**  
**PROJECTION HEAD ASSEMBLY (NON-ARTICULATE)**



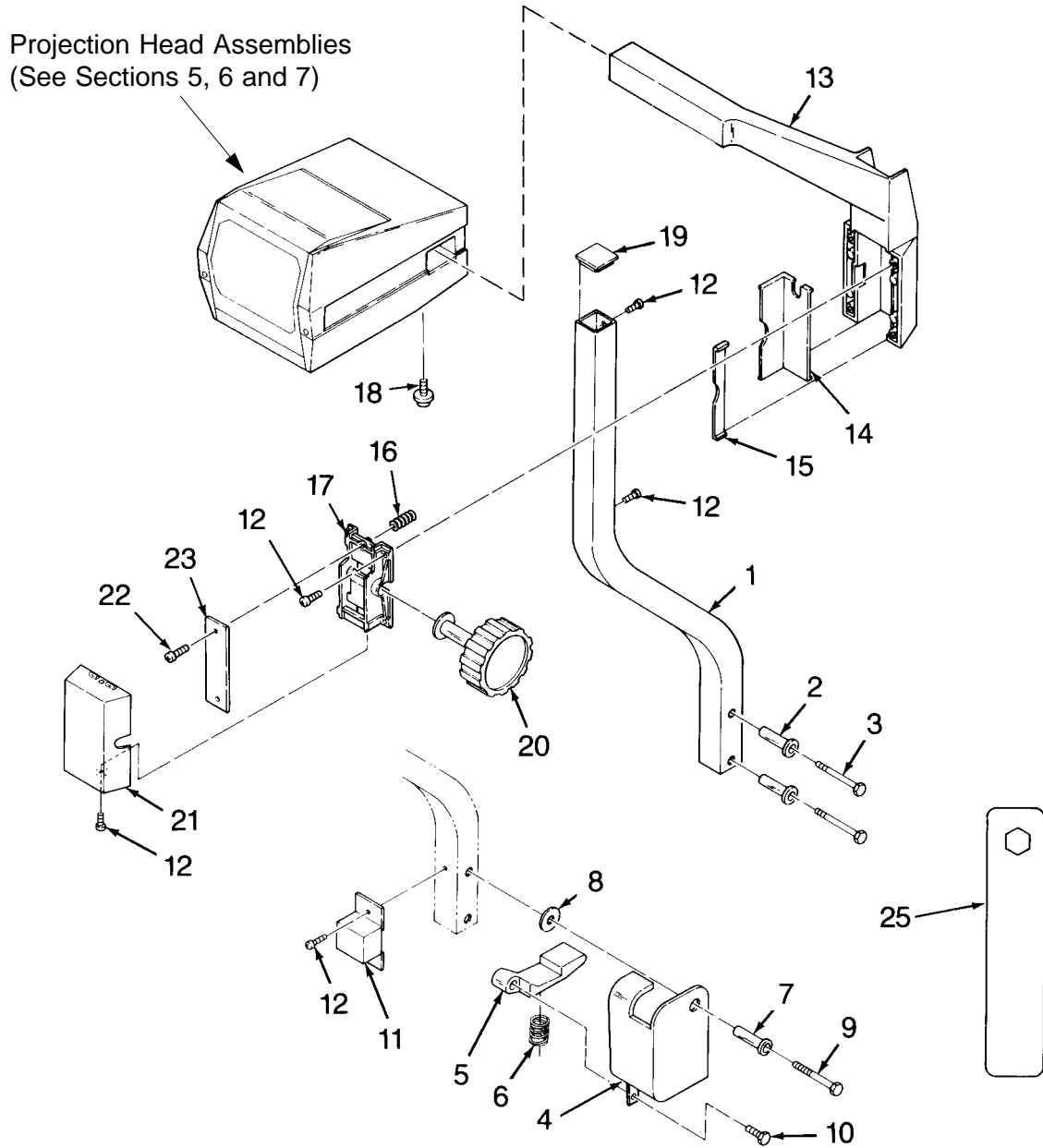
Item No.	Part Number	Description	Qty
1A	78-8005-2145-8	PROJECTION HEAD ASSEMBLY, Non-Articulate, 355MM (14") (Includes items 2-8)	1
1B	78-8005-2501-2	PROJECTION HEAD ASSEMBLY, Non-Articulate, 293MM (11.5") (Includes items 2-8)	1
2	78-8011-1491-5	CASE	1
3	78-8005-2147-4	COVER	1
4A	78-8704-6039-7	LENS, Entrance and Exit, Non-Articulate, 355MM (14")	2
4B	78-8014-8951-5	LENS, Entrance, Non-Articulate, 293MM (11.5")	1
4C	Not Available	LENS, Exit, Non-Articulate, 293MM (11.5")	1
5	78-8011-1203-4	MIRROR	1
6	78-8005-2149-0	CLIP, U Type	1
7	78-8005-2150-8	SCREW	1
8	Not Available	LABEL, 3M Logo	1
9	Not Available	HEAD HOLDER	1
10	78-8014-7299-0	SHAFT	1
11	HY-0000-3213-1	WASHER	2
12	78-8697-9729-6	SPACER	2
13	26-1004-9839-8	NUT	2

Section 7  
PROJECTION HEAD ASSEMBLY (OPEN)



Item No.	Part Number	Description	Qty
1A	Not Available	PROJECTION HEAD ASSEMBLY, Open, Triplet, 327MM (12.9")	1
1B	Not Available	PROJECTION HEAD ASSEMBLY, Open, Singlet, 293MM (11.5" Wide Angle)	1
2A	Not Available	HEAD HOLDER ASSEMBLY, 327MM Head	1
2B	Not Available	HEAD HOLDER ASSEMBLY, 293MM Head	1
3A	78-8014-8947-3	LENS ASSEMBLY, Triplet, 327MM (12.9")	1
3B	78-8014-8951-5	LENS ASSEMBLY, Single, 293MM (11.5" For Wide Angle)	1
4	Not Available	SCREW, M3 X .5 X 8	3
5	78-8010-7415-0	NUT, M3 X .5	3
6	78-8011-1486-5	MIRROR CASING	1
7	78-8011-1487-3	MIRROR	1
8	Not Available	MIRROR RETAINER BRACKET	1
9	Purchase Locally	SCREW	2
10	78-8011-1467-5	SPRING	1
11	18-9813-1403-4	WASHER	1
12	DY-1120-0530-0	KNOB	1
13	Not Available	PIN MIRROR PIVOT	1
14	Not Available	RETAINER	2
15	78-8015-2219-0	LENS RETAINER (For 293MM Singlet Lens Only)	1
16	77-8001-1515-4	FOAM TAPE	1
17	Not Available	LABEL, 3M Logo	1
18	Not Available	SCREW, Self Tapping, Thd Form, 8-18 X 1/2 Lg	2

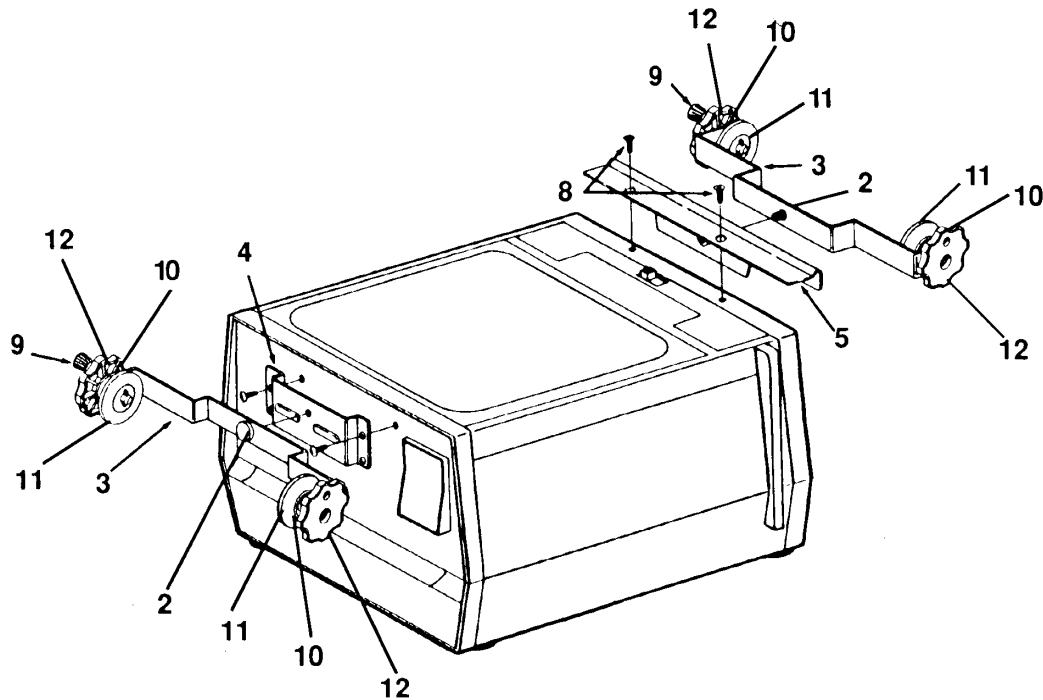
Section 8  
POST MOUNT ARM AND FOCUS ASSEMBLY



**Section 8**  
**POST MOUNT ARM AND FOCUS ASSEMBLY**

Item No.	Part Number	Description	Qty
1	78-8011-1154-9	POST	1
2	78-8011-1251-3	BUSHING, Guide, Non Portable Assembly	2
3	26-1000-4860-7	SCREW, M5 X .8 X 35, Non Portable Assembly	2
4	78-8011-1430-3	COVER ASSEMBLY, Hinge, Portable Assembly	1
5	78-8011-1248-9	LOCK, Portable Assembly	1
6	78-8011-1252-1	SPRING LOCK, Portable Assembly	1
7	78-8011-1250-5	BUSHING, Pivot, Portable Assembly	1
8	78-8011-1349-5	WASHER, Plastic, Portable Assembly	1
9	26-1000-4861-5	SCREW, M5 X .8 X 40, Portable Assembly	1
10	26-1000-2421-0	SCREW, M5 X .8 X 14, Portable Assembly	1
11	78-8011-1422-0	SHIELD, Post Locks, Portable Assembly	1
12	Not Available	SCREW, M3 X .5 X 10, Portable Assembly	5
13	78-8011-1352-9	ARM	1
14	78-8011-1220-8	WEAR PAD (Angle)	1
15	78-8011-1230-7	WEDGE	1
16	78-8014-8984-6	SPRING, Wedge	1
17A	78-8014-8983-8	BRACKET, Plastic	1
17B	78-8011-1231-5	BRACKET, Steel	1
18	26-1003-6669-4	SCREW, Head Mounting	1
19	78-8011-1420-4	PLUG, Post Cap	1
20A	78-8015-2358-6	KNOB AND ROLLER ASSEMBLY	1
20B	78-8011-1233-1	KNOB ONLY	1
20C	78-8011-1232-3	ROLLER ONLY	1
21	78-8011-1308-1	COVER, Roller	1
22	78-8005-8213-8	SCREW, 8-16 X 3/8	2
23	78-8011-1228-1	SPRING, Roller Pad	1
24	Not Used		
25	78-8011-1485-7	WRENCH	1

Section 9  
ROLLER ATTACHMENT



Item No.	Part Number	Description	Qty
1	Not Available	WASHER, Keeper (For thumb screw) (Not shown)	2
2	78-8015-2307-3	THUMB SCREW	2
3A	78-8015-2241-4	KNOB & BRACKET ASSEMBLY, 10 1/4" (260.4MM)	2
3B	78-8015-2240-6	KNOB & BRACKET ASSEMBLY, 11 1/4" (285.8MM)	2
4	Not Available	MOUNTING BRACKET ASSEMBLY	2
5	Not Available	REAR MOUNTING BRACKET ASSEMBLY	1
6A	78-8052-8348-4	TAKE UP ROLL, 10 1/4" (260.4MM) (Not shown)	1
6B	78-8052-8347-6	TAKE UP ROLL, 11 1/4" (285.8MM) (Not shown)	1
7	26-0000-1167-1	SCREWS, Pan Head, 8-16 X 3/8, Lg	6
8	26-1000-7472-8	SCREWS, Flat Head, 8-16 X 3/8, Lg	2
9	78-8613-8300-4	HANDLE	2
10	78-8015-2206-7	SPRING	4
11	78-8064-1576-2	DRIVER SPINDLE	4
12	78-8011-1391-7	KNOB, Driver	4
13	18-4712-5403-9	SCREW (For Handle) (Not shown)	2
14	12-7991-1506-3	NUT (For Handle) (Not shown)	2
15	78-8697-9653-8	SPACER (For Handle) (Not shown)	2



**Visual Systems**

6801 River Place Boulevard  
Austin, Texas 78726-9000



*Printed on 50% recycled  
waste paper, including 10%  
post-consumer waste paper.*

Printed in U.S.A.

©3M 6/96 78-6970-4959-7 Rev. B