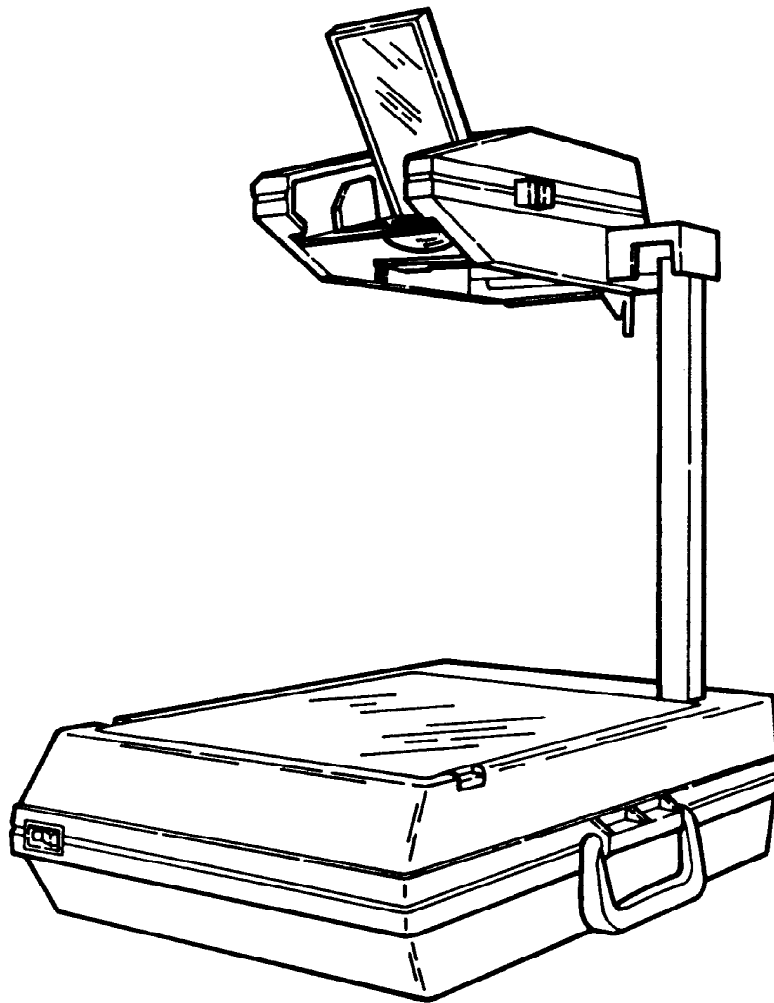


3M

2000 Overhead Projector

Illustrated Parts Breakdown



Revision History

Revision bars (■) are **not** used in this update.

The original issue of this manual and subsequent revisions are identified as follows:

Issue date: 3/92

Revision	Date	Page(s) Changed	Change
Original	March 1992	All pages	
	November 1995	All pages	
	March 1997	All pages	Globally introduce kit formatting on all pages. M2000 Hardware Repair Kit (78-8062-1150-0) appears in all illustrations.
	2000	Cover, footers, page 7-17	Changed part number on page 7-17, item 1.

This page intentionally left blank

Introduction	iii
Part Numbers	iii
Locating and Identifying a Part	iii
Machine Identification Plate	1
Section 0 OVERVIEW	2
Section 1 MIRROR HOUSING ASSEMBLY SPARE PART KIT	3
Section 2 BASE AND BASE TOP ASSEMBLY SPARE PART KIT	4
Section 3 LAMP ASSEMBLY-EVW SPARE PART KIT	5
Section 4 LAMP MODULE ASSEMBLY-FSY SPARE PART KIT	6
Section 5 LAMP MODULE ASSEMBLY-FSX SPARE PART KIT	7
Section 6 TOP SHROUD ASSEMBLY-EVW SPARE PART KIT	8
Section 7 TOP SHROUD ASSEMBLY-FSX/FSY SPARE PART KIT	9
Section 8 PROJECTION LENS ASSEMBLY-SINGLET SPARE PART KIT	10
Section 9 PROJECTION LENS ASSEMBLY-TRIPLLET SPARE PART KIT	11
Section 10 FOCUS MECHANISM ASSEMBLY SPARE PART KIT	12
Section 11 POST AND PIVOT ASSEMBLY-DOMESTIC SPARE PART KIT	13
Section 12 POST AND PIVOT ASSEMBLY-INTERNATIONAL SPARE PART KIT	14
Section 13 RESISTOR KIT	16
Section 14 STAGE COVER ASSEMBLY-DOMESTIC SPARE PART KIT	17
Section 15 WIRE JUMPERS	18
Appendix A SPECIFICATIONS	21

Introduction

This Illustrated Parts Breakdown (IPB) contains the information necessary to locate and identify specific parts of the 2000 Overhead Projector.

Part Numbers

All components available on a replacement basis are listed with their 3M identification number. The parts identification list opposite each illustration provides the description adequate to identify components.

Locating and Identifying a Part

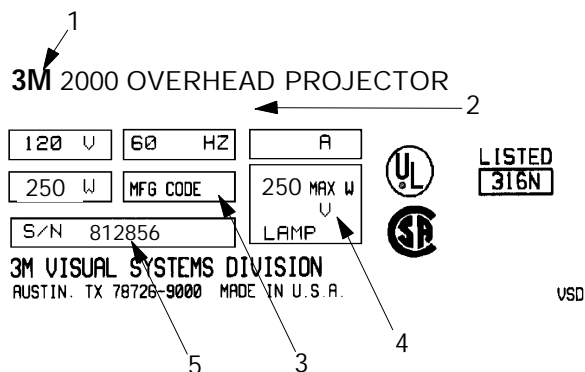
If physical appearance and general location of an item are known:

1. Use the Overview illustration to determine which section includes the item.
2. Refer to the section and locate the item on the exploded view illustration.
 - S Dashed line box defines assembled kits.
 - S Common fasteners are only available by ordering the hardware kit.
 - S Items outside the dashed line box are available separately.

The part identification numbers provided in this manual are from the most current data available. Make sure part identification numbers for your component have not been amended by changes and updates made to your 2000 Overhead Projector.

Machine Identification Plate

The Machine Identification Plate is located on the inside wall of each projector and lists specific information that is needed when calling for technical assistance or ordering parts.



When ordering parts, include part identification number, description, quantity and the following information:

1. Product Name: The specific version number of the projector.
2. Model Number/Alpha Code: The series number of the projector followed by a three or four character alpha code identifier. The Alpha Code indicates the design level, specific product characteristics, power cord or distribution specific to a country.
3. MFG Code: The MFG Code indicates the year and quarter the projector was built. See example below:

MFG Code			
Letter		Digit	
L	1992	1	Jan - Mar
M	1993	2	Apr - Jun
A	1994	3	Jul - Sep
C	1995	4	Oct - Dec
D	1996	1	Jan - Mar
E	1997	2	Apr - Jun

4. Lamp: The electrical rating of the lamp.
5. S/N: The serial number assigned to this projector.

For part orders contact:

Dealers:	Refer to Dealers Guide
3M Subsidiaries:	Contact Export Operations
Retail Customers:	
FAX:	1-800-852-3917
Telephone:	1-800-328-2883

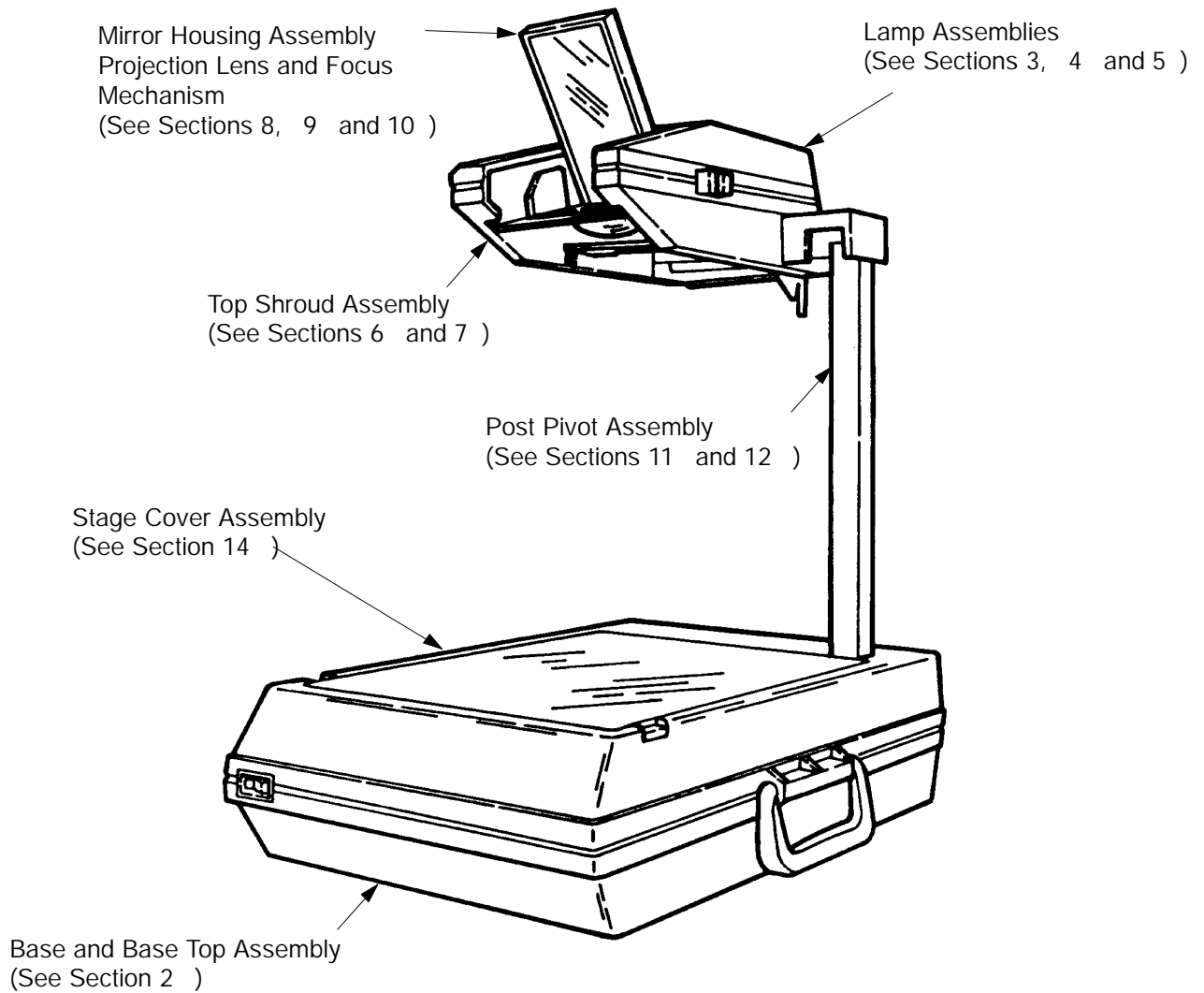
Figure 1-1. Machine Identification Plate

Quick Reference Parts Index

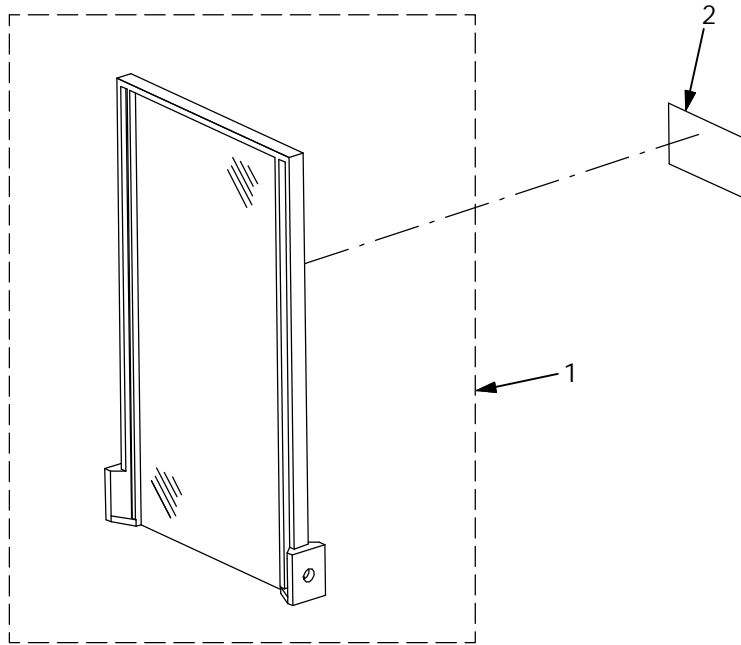
Description	Part Number	Section No.	Item No.
FRESNEL LENS, Reflective, 10.5 S, 187.1mm, FL	78-8014-7442-6	14	2A
FRESNEL LENS, Reflective, 10.5 T, 187.1mm, FL	78-8014-6798-2	14	2B
FRESNEL LENS, Reflective, A4 S, 187.1mm, FL (For Japanese models also)	78-8014-7443-4	14	2C
FRESNEL LENS, Reflective, A4 T, 187.1mm, FL	78-8014-6799-0	14	2D
FRESNEL LENS, Reflective, A4, 187.1mm, FL, Japan	78-8065-8588-7	14	2F
FUSE, 5 Amp, 5 X 20mm, Slow Acting (All except ABJ and ABJT)	26-1005-9599-5	2	6A
FUSE, 5 Amp, Japan (ABJ, ABJT)	JJ-9960-0007-8	2	6B
LAMP, Projection, EVW, 82V	78-8014-6796-6	3	2
LAMP, Projection, FSY, 400W, 240V	78-8057-4163-0	4	2
LAMP, Projection, FSX, 400W, 230V	78-8057-4162-2	5	2
POWER CORD, Australia	78-8057-4196-0	12	4A
POWER CORD, Europe	78-8057-4170-5	12	4H
POWER CORD, Italy	78-8062-1368-8	12	4D
POWER CORD, Japan	JY-2000-0001-8	12	4B
POWER CORD, South Africa	78-8057-4204-2	12	4E
POWER CORD, Switzerland	78-8057-4199-4	12	4G
POWER CORD, United Kingdom	78-8057-4191-1	12	4I
POWER CORD, United States, 10'	78-8064-1536-6	11	4A
POWER CORD, 3M Logo, 2 Blade With Ground, 10'	78-8062-1378-7	11	4B

**Section 0
OVERVIEW**

To Section One



Section 1
MIRROR HOUSING ASSEMBLY SPARE PART KIT

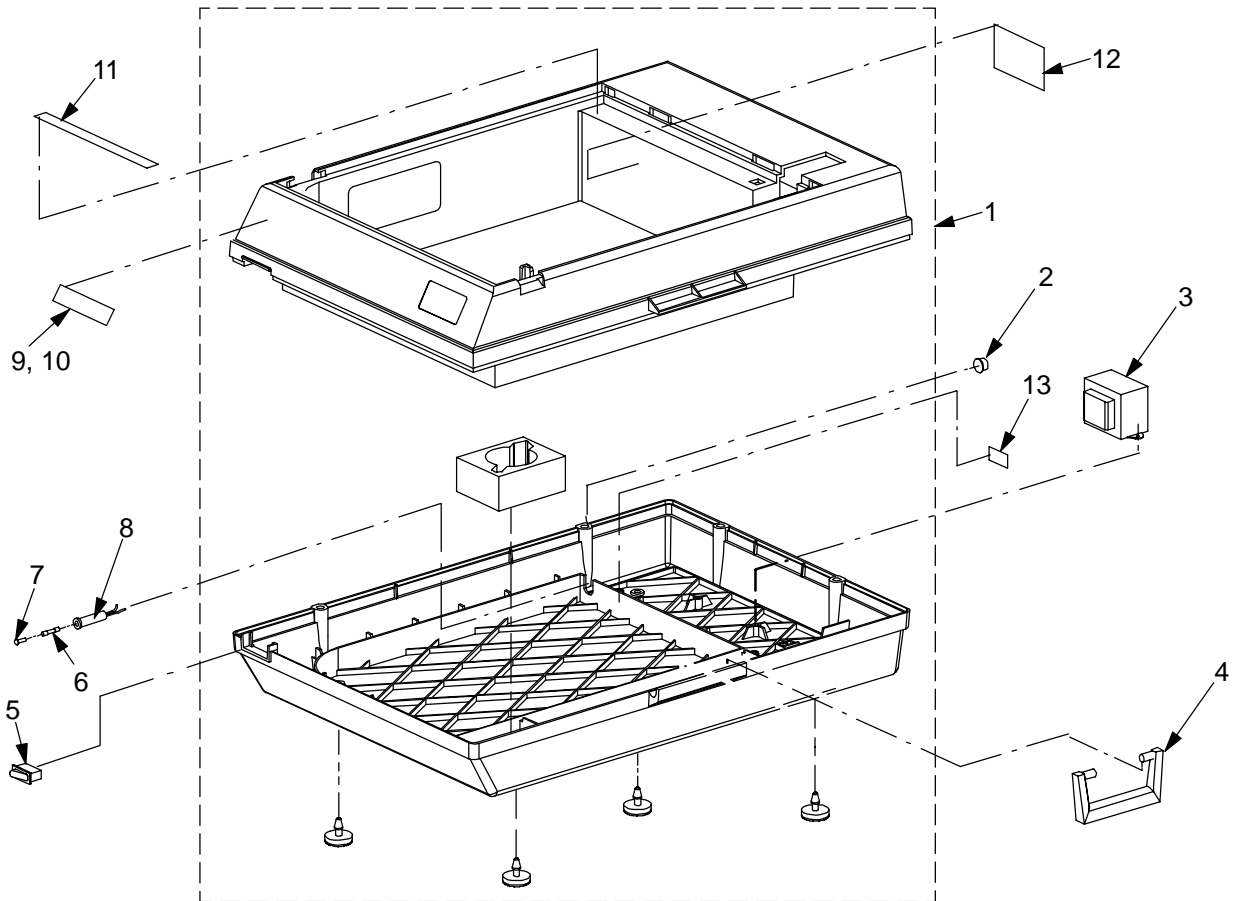


NOTE: Screws, Nuts, Bolts, Clips, and etc. are contained in Hardware Kit **78-8062-1150-0**.

Section 1
MIRROR HOUSING ASSEMBLY SPARE PART KIT

Item No.	Part Number	Description	Qty
1	78-8057-4230-7	MIRROR HOUSING ASSEMBLY Spare Part Kit	1
2	JV-1890-0234-6	LABEL, Caution, Mirror, Japan	1

Section 2
BASE AND BASE TOP ASSEMBLY SPARE PART KIT

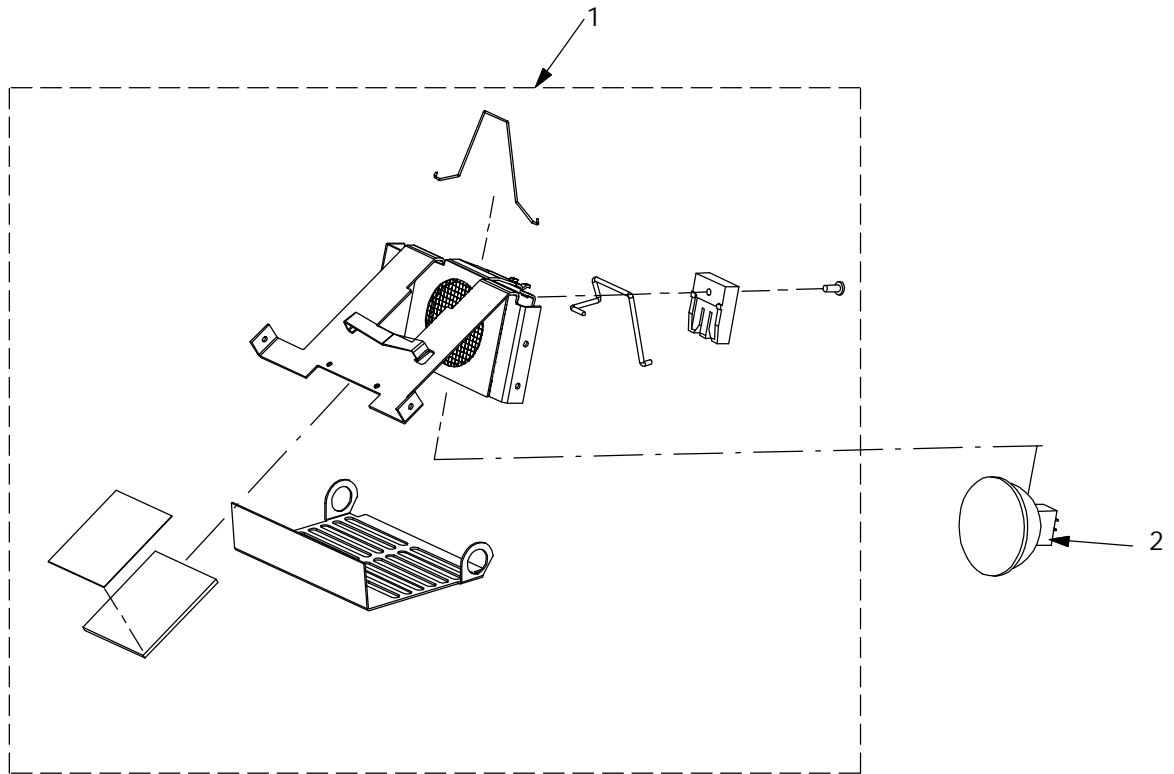


NOTE: Screws, Nuts, Bolts, Clips, and etc. are contained in Hardware Kit 78-8062-1150-0.

Section 2
BASE AND BASE TOP ASSEMBLY SPARE PART KIT

Item No.	Part Number	Description	Qty
1	78-8062-1114-6	BASE AND BASE TOP ASSEMBLY Spare Part Kit	1
2	26-1002-4730-8	PLUG, Hole, Black	1
3	78-8044-6919-1	TRANSFORMER, Japan (ABJ, ABJT)	1
4	26-1005-7653-2	HANDLE, Plastic, Molded	1
5A	78-8057-4158-0	SWITCH, ON/OFF (S/N 860256 and below)	1
5B	78-8057-0959-5	SWITCH, ON/OFF (S/N 860257 and above)	1
6A	26-1005-9599-5	FUSE, 5 Amp, 5 X 20mm, Slow Acting (All except ABJ and ABJT)	1
6B	JJ-9960-0007-8	FUSE, 5 Amp, Japan (ABJ, ABJT)	1
7A	26-1001-6189-7	FUSEHOLDER, Panel Mounted (All except ABJ and ABJT)	1
7B	26-1001-6190-5	FUSEHOLDER, Panel Mounted (ABJ, ABJT)	1
8	78-8057-4166-3	FUSEHOLDER ASSEMBLY	1
9	78-8062-1362-1	LABEL, M2000T, Japan	1
10	78-8062-1361-3	LABEL, M2000S, Japan	1
11	78-8057-4186-1	LABEL, General Instructions	1
12	JV-0890-0183-6	LABEL, Caution, Japan	1
13	78-8057-4184-6	LABEL, Fuse Replacement, 5 Amp	1

Section 3
LAMP ASSEMBLY-EVW SPARE PART KIT

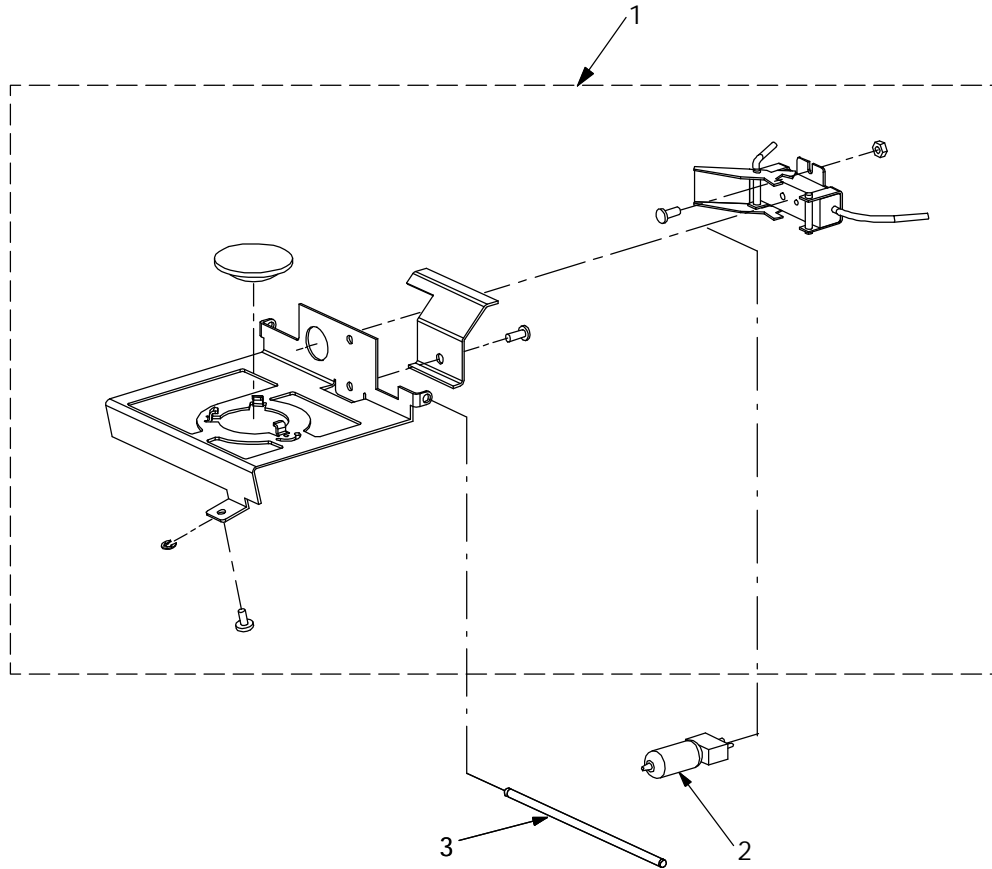


NOTE: Screws, Nuts, Bolts, Clips, and etc. are contained in Hardware Kit **78-8062-1150-0**.

Section 3
LAMP ASSEMBLY-EVW SPARE PART KIT

Item No.	Part Number	Description	Qty
1	78-8062-1090-8	LAMP ASSEMBLY-EVW Spare Part Kit	1
2	78-8014-6796-6	LAMP, Projection, EVW, 82V	1

Section 4
LAMP MODULE ASSEMBLY-FSY SPARE PART KIT

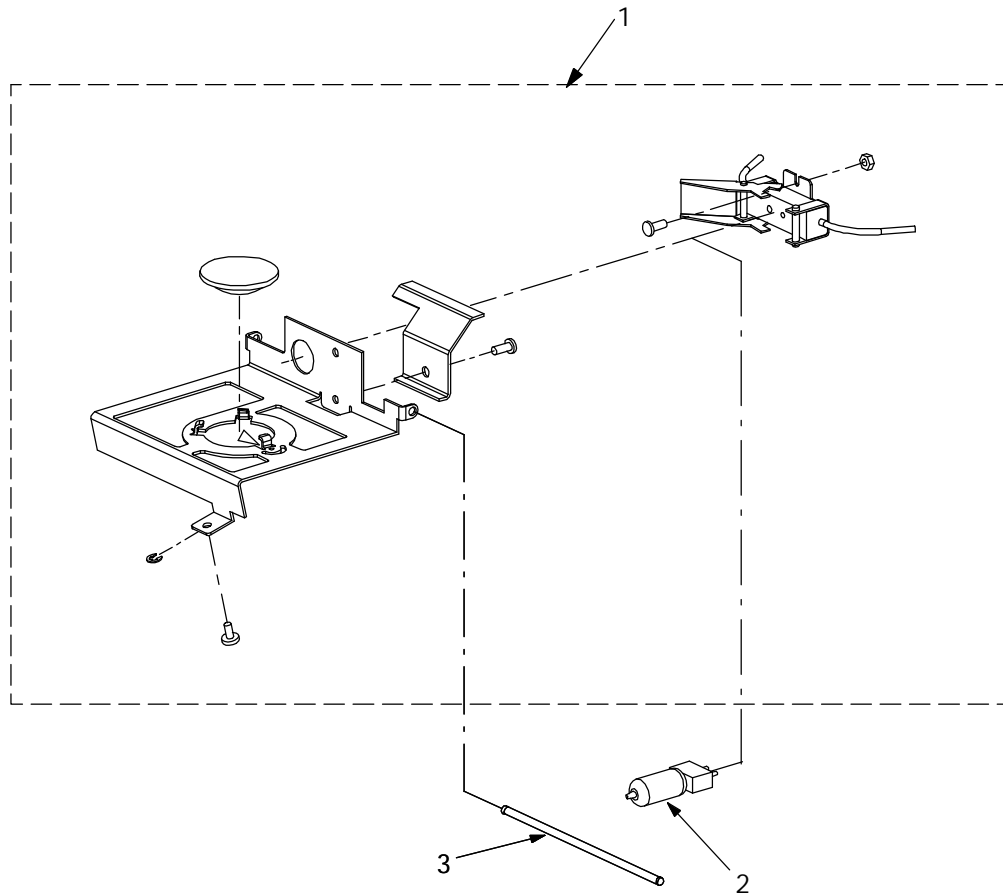


NOTE: Screws, Nuts, Bolts, Clips, and etc. are contained in Hardware Kit **78-8062-1150-0**.

Section 4
LAMP MODULE ASSEMBLY-FSY SPARE PART KIT

Item No.	Part Number	Description	Qty
1	78-8062-1115-3	LAMP MODULE ASSEMBLY-FSY Spare Part Kit	1
2	78-8057-4163-0	LAMP, Projection, FSY, 400W, 240V	1
3	78-8057-4056-6	SHAFT, Lampholder	1

Section 5
LAMP MODULE ASSEMBLY-FSX SPARE PART KIT

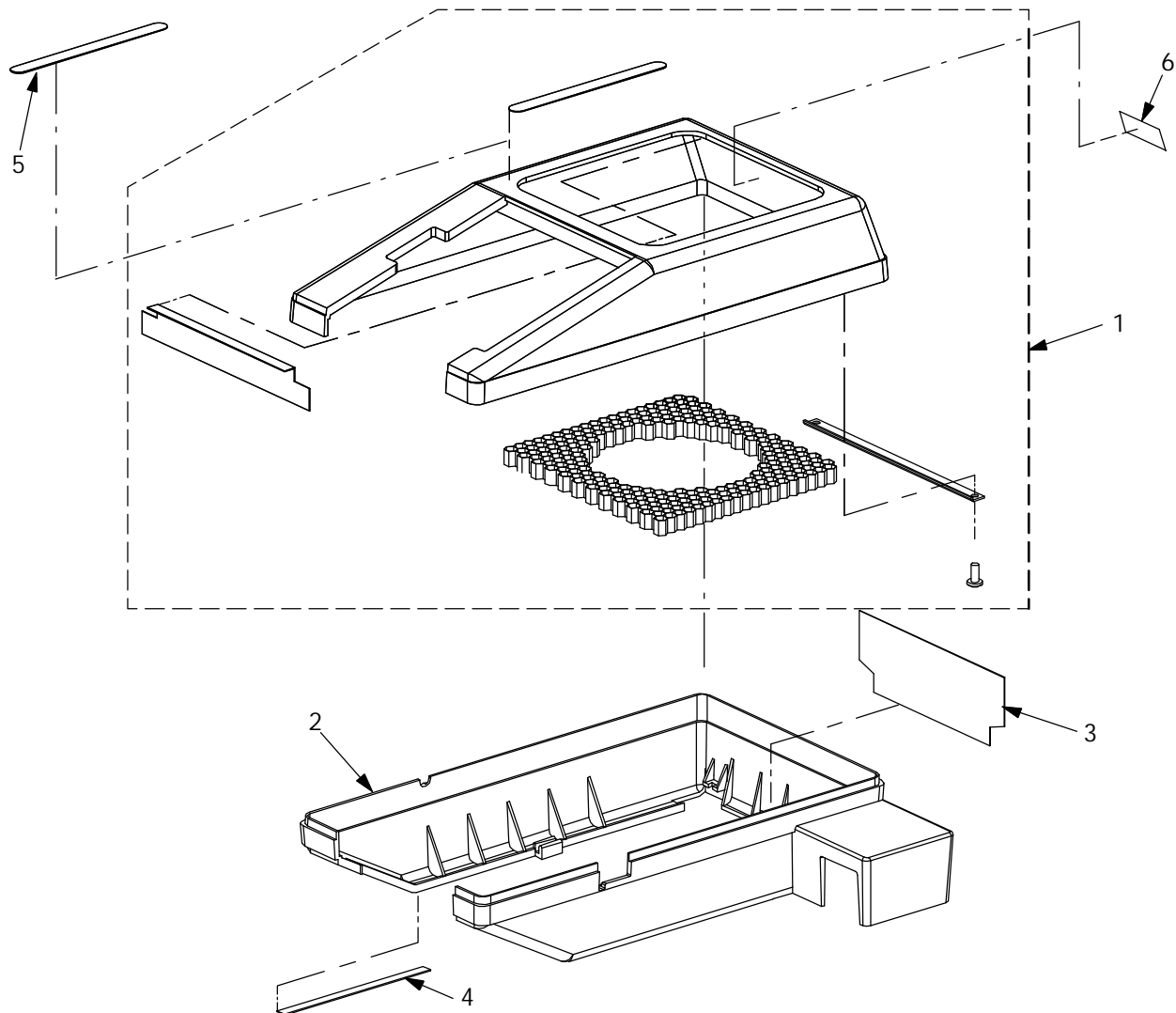


NOTE: Screws, Nuts, Bolts, Clips, and etc. are contained in Hardware Kit **78-8062-1150-0**.

Section 5
LAMP MODULE ASSEMBLY-FSX SPARE PART KIT

Item No.	Part Number	Description	Qty
1	78-8062-1116-1	LAMP MODULE ASSEMBLY-FSX Spare Part Kit	1
2	78-8057-4162-2	LAMP, Projection, FSX, 400W, 230V	1
3	78-8057-4056-6	SHAFT, Lampholder	1

Section 6
TOP SHROUD ASSEMBLY-EVW SPARE PART KIT

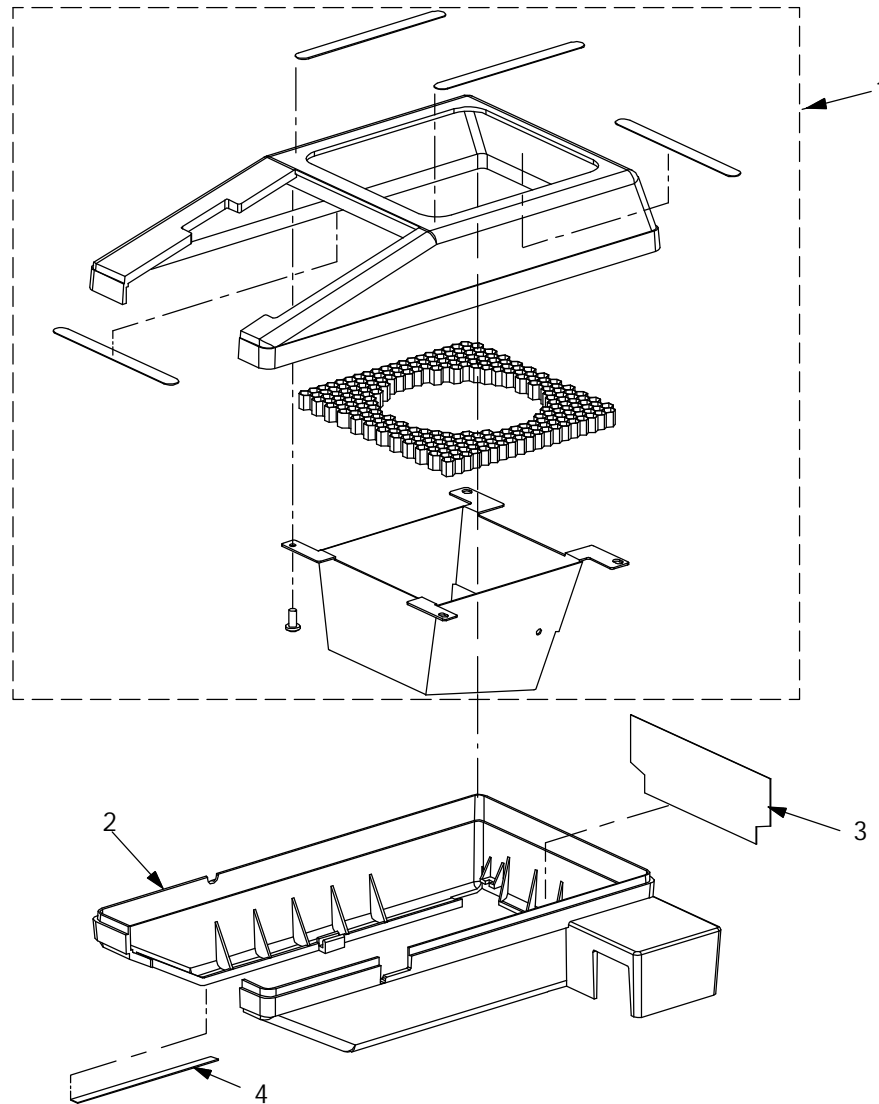


NOTE: Screws, Nuts, Bolts, Clips, and etc. are contained in Hardware Kit 78-8062-1150-0.

Section 6
TOP SHROUD ASSEMBLY-EVW SPARE PART KIT

Item No.	Part Number	Description	Qty
1	78-8057-4285-1	TOP SHROUD ASSEMBLY Spare Part Kit	1
2	78-8057-4275-2	COVER, Head, Bottom	1
3	70-0000-5264-0	TAPE, Reflective, 1.75" X 3.5" X 60 YDS	AR
4	78-8057-4161-4	LABEL, Lamp Replacement, EVW	1
5	78-8065-8492-2	LABEL, Caution, Japan	1
6	JV-0891-0182-6	LABEL	1

**Section 7
TOP SHROUD ASSEMBLY-FSX/FSY SPARE PART KIT**

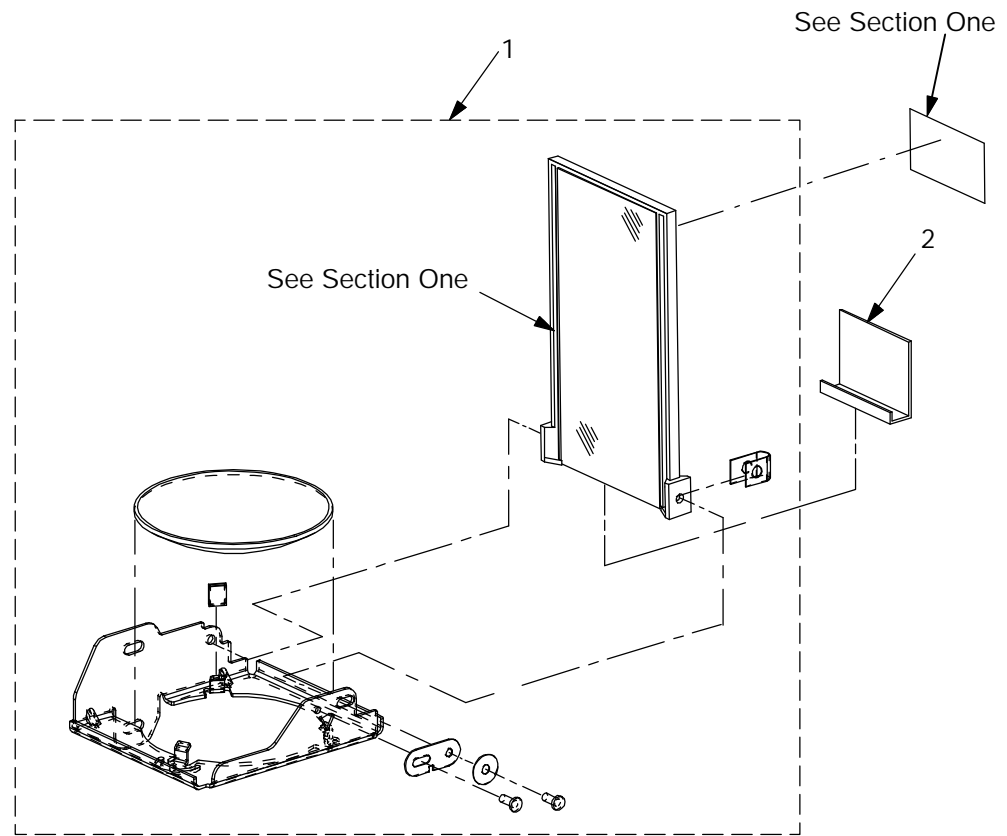


NOTE: Screws, Nuts, Bolts, Clips, and etc. are contained in Hardware Kit **78-8062-1150-0**.

**Section 7
TOP SHROUD ASSEMBLY-FSX/FSY SPARE PART KIT**

Item No.	Part Number	Description	Qty
1	78-8057-4286-9	TOP SHROUD ASSEMBLY-FSX/FSY Spare Part Kit	1
2	See Section 6	COVER, Head, Bottom	1
3	See Section 6	TAPE, Reflective, 1.75" X 3.5" X 60 YDS	AR
4	78-8062-0954-6	LABEL, Lamp Replacement, FSX/FSY	1

Section 8
PROJECTION LENS ASSEMBLY-SINGLET SPARE PART KIT

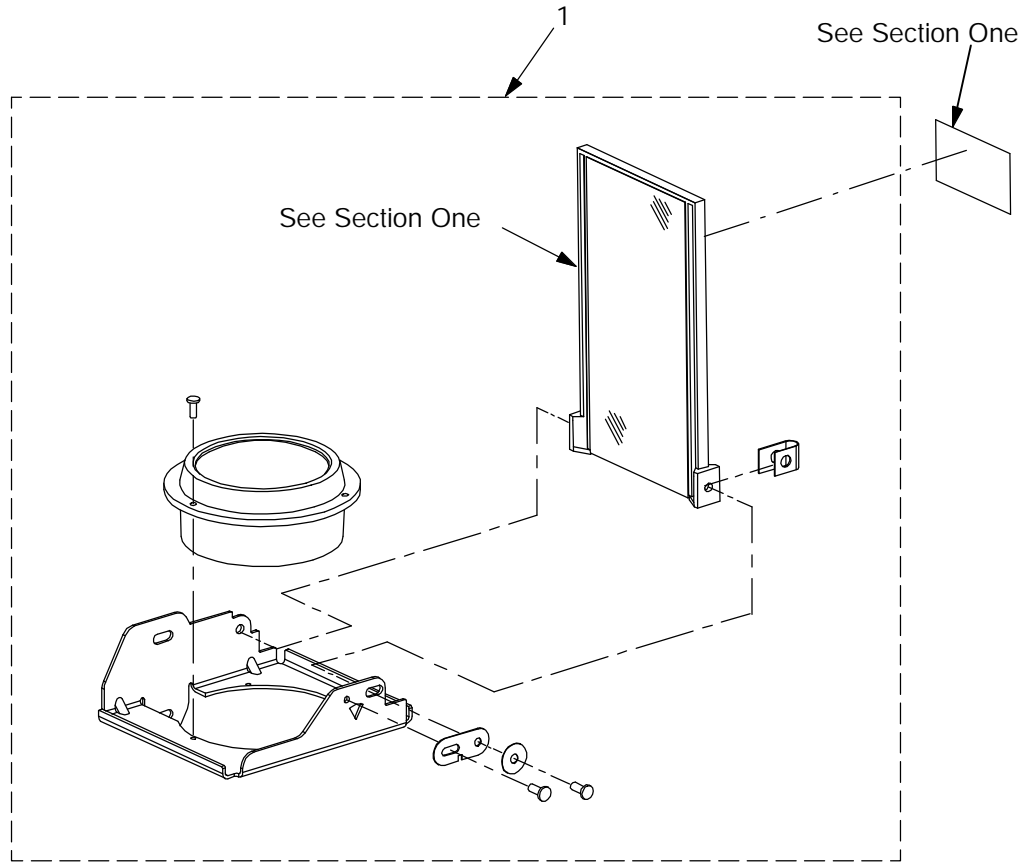


NOTE: Screws, Nuts, Bolts, Clips, and etc. are contained in Hardware Kit **78-8062-1150-0**.

Section 8
PROJECTION LENS ASSEMBLY-SINGLET SPARE PART KIT

Item No.	Part Number	Description	Qty
1	78-8057-4167-1	PROJECTION LENS ASSEMBLY-Singlet Spare Part Kit	1
2	78-8057-4165-5	SHIELD, Protection	1

**Section 9
PROJECTION LENS ASSEMBLY-TRIPLET SPARE PART KIT**

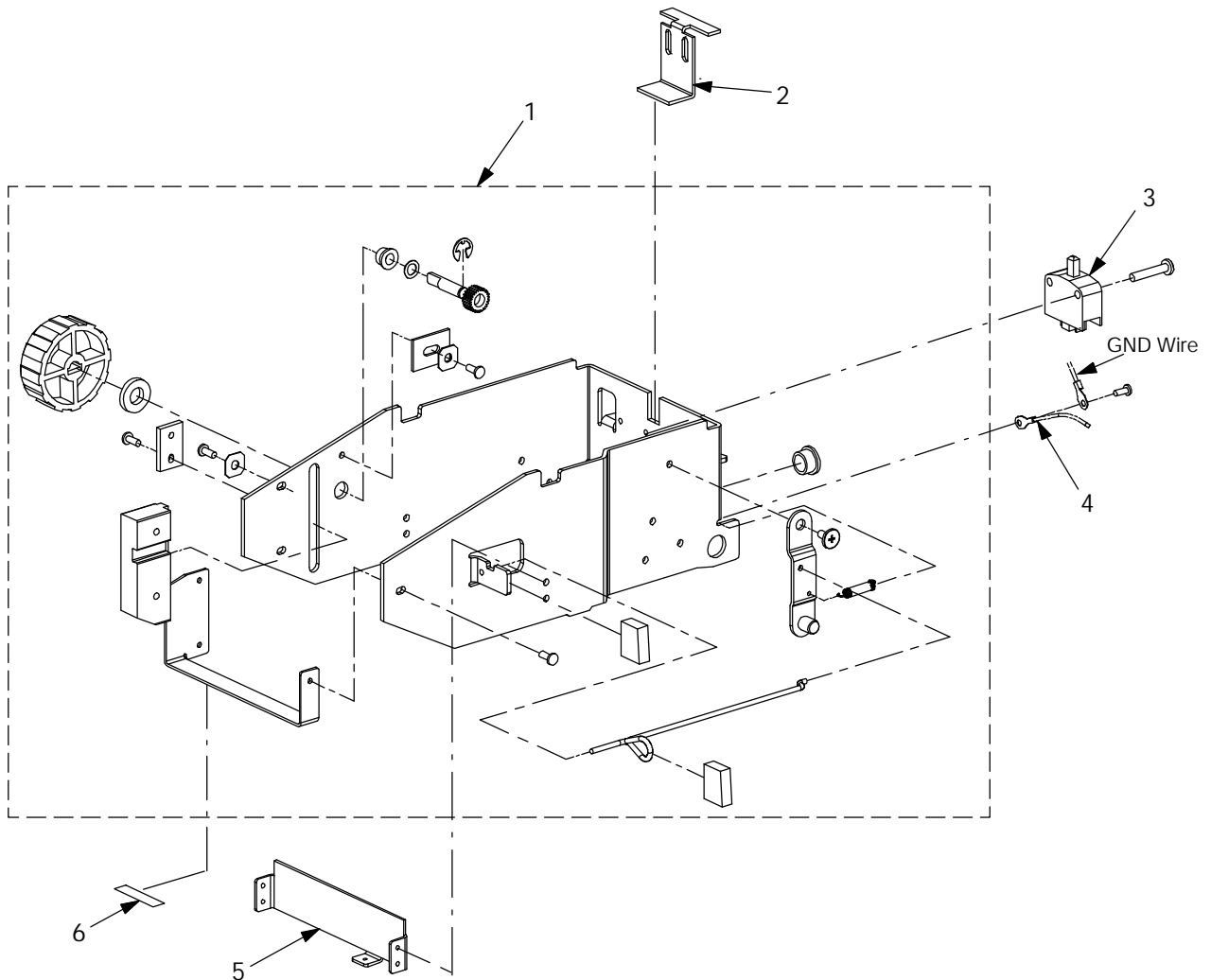


NOTE: Screws, Nuts, Bolts, Clips, and etc. are contained in Hardware Kit **78-8062-1150-0**.

**Section 9
PROJECTION LENS ASSEMBLY-TRIPLET SPARE PART KIT**

Item No.	Part Number	Description	Qty
1	78-8057-4130-9	PROJECTION LENS ASSEMBLY-Triples Spare Part Kit	1

Section 10
FOCUS MECHANISM ASSEMBLY SPARE PART KIT

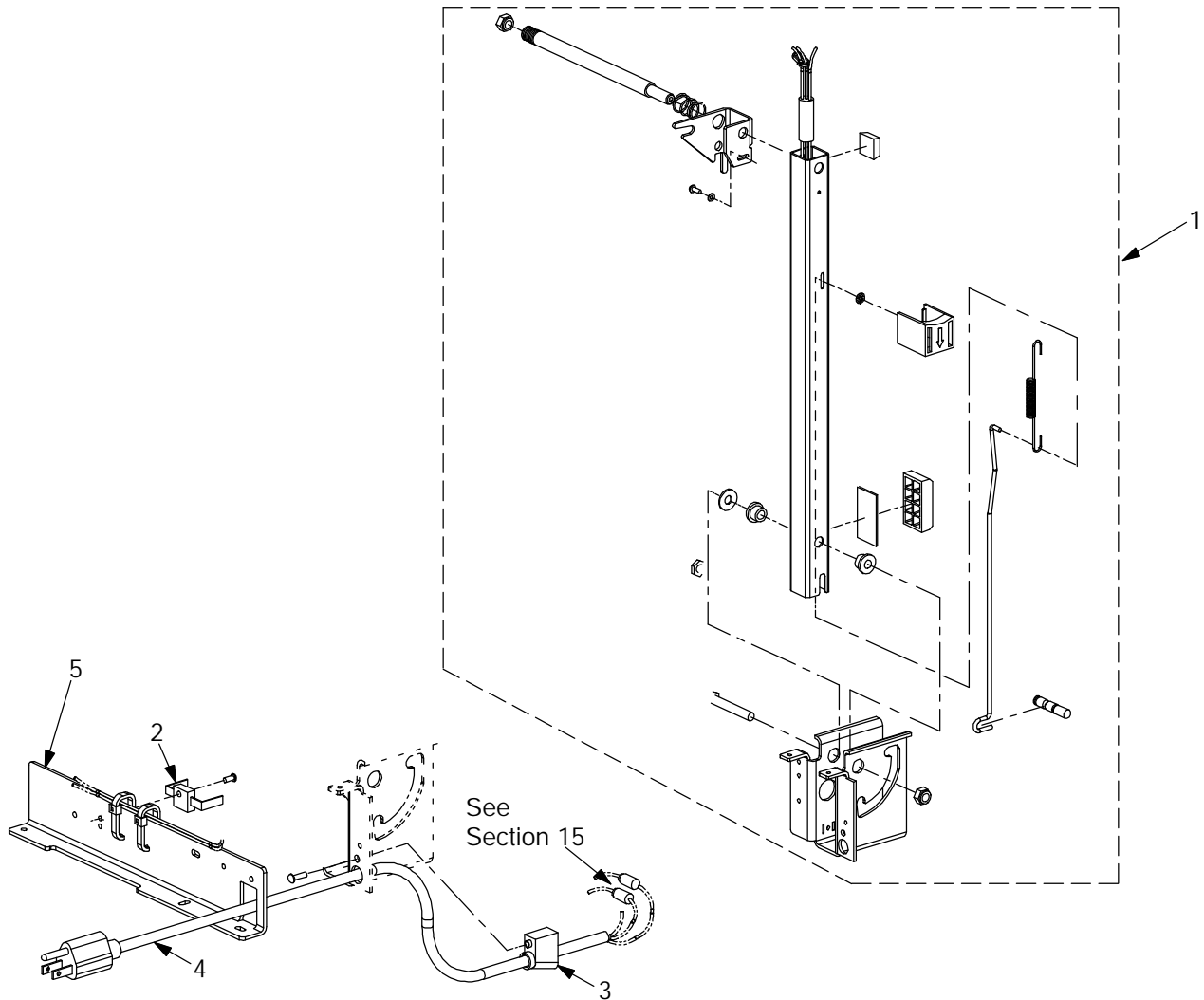


NOTE: Screws, Nuts, Bolts, Clips, and etc. are contained in Hardware Kit **78-8062-1150-0**.

Section 10
FOCUS MECHANISM ASSEMBLY SPARE PART KIT

Item No.	Part Number	Description	Qty
1	78-8057-4035-0	FOCUS MECHANISM ASSEMBLY Spare Part Kit	1
2	78-8057-4111-9	ACTUATOR, Interlock Switch (AHA, AHAT, AHNT, AHNV, AHR, AHSC, AHST, AHSV, AHUT, AHUU, AHUV, AHZT)	1
3	78-8057-4102-8	SWITCH, Interlock (AHA, AHAT, AHNT, AHNV, AHR, AHSC, AHST, AHSV, AHUT, AHUU, AHUV, AHZT)	1
4	78-8065-8232-2	WIRE, Ground	1
5	78-8057-4094-7	BRACKET, Tie (Lampholder)	1
6	JV-0890-0185-1	LABEL, Caution, Japan, Head	1

**Section 11
POST AND PIVOT ASSEMBLY-DOMESTIC SPARE PART KIT**



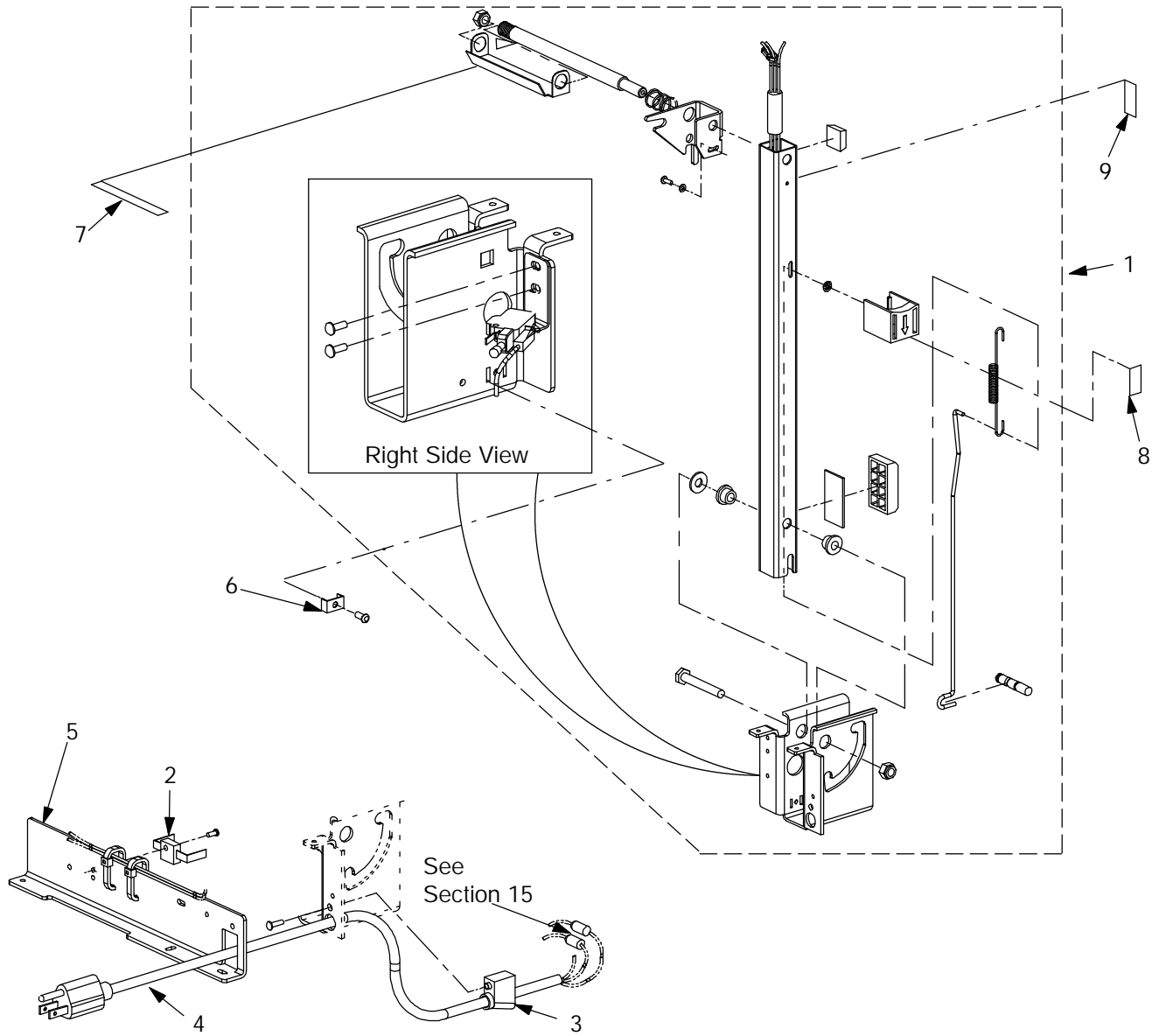
NOTE: Screws, Nuts, Bolts, Clips, and etc. are contained in Hardware Kit **78-8062-1150-0**.

**Section 11
POST AND PIVOT ASSEMBLY-DOMESTIC SPARE PART KIT**

Item No.	Part Number	Description	Qty
1	78-8062-1117-9	POST AND PIVOT ASSEMBLY-Domestic Spare Part Kit	1
2	78-8064-1891-5	DIODE, Surface Mount	1
3	DY-1160-2020-6	STRAIN RELIEF	1
4A	78-8064-1536-6	POWER CORD, United States, 10'	1
4B	78-8062-1378-7	POWER CORD, 3M Logo, 2 Blade With Ground, 10'	1
5	78-8062-1367-0	BRACKET, Post Tie	1

Section 12
POST AND PIVOT ASSEMBLY-INTERNATIONAL SPARE PART KIT

To Parts List

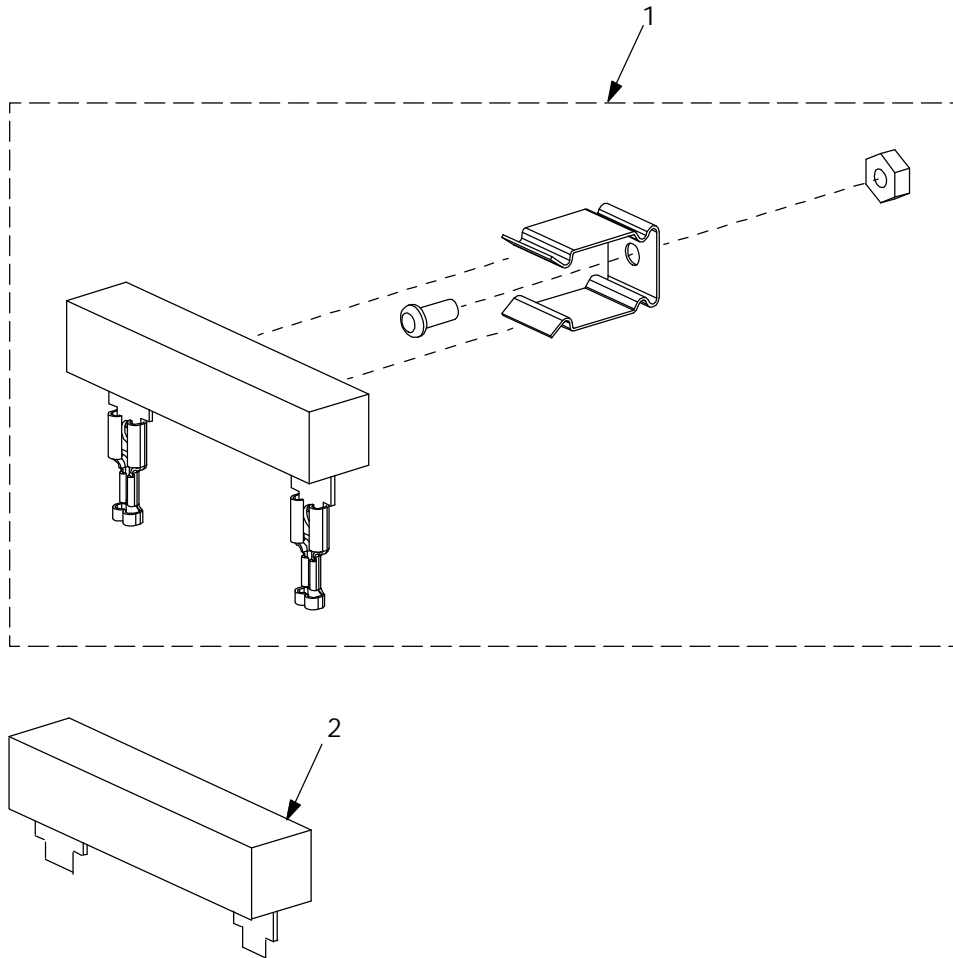


NOTE: Screws, Nuts, Bolts, Clips, and etc. are contained in Hardware Kit **78-8062-1150-0**.

Section 12
POST AND PIVOT ASSEMBLY-INTERNATIONAL SPARE PART KIT

Item No.	Part Number	Description	Qty
1	78-8062-1118-7	POST AND PIVOT ASSEMBLY-International Spare Part Kit	1
2	See Section 11	DIODE, Surface Mount	1
3	See Section 11	STRAIN RELIEF	1
4A	78-8057-4196-0	POWER CORD, Australia	1
4B	78-8057-4170-5	POWER CORD, Europe	1
4C	78-8062-1368-8	POWER CORD, Italy	1
4D	JY-2000-0001-8	POWER CORD, Japan	1
4E	78-8057-4204-2	POWER CORD, South Africa	1
4F	78-8057-4199-4	POWER CORD, Switzerland	1
4G	78-8057-4191-1	POWER CORD, United Kingdom	1
5	See Section 11	BRACKET, Post Tie	1
6	78-8010-0131-0	CLAMP, Ground	1
7	78-8062-1364-7	LABEL, Lamp Replacement, 82V-250W	1
8	78-8054-1713-2	LABEL, Post, Japan	1
9	JV-1890-0232-0	LABEL, Caution, Post, Japan	1

**Section 13
RESISTOR KIT**

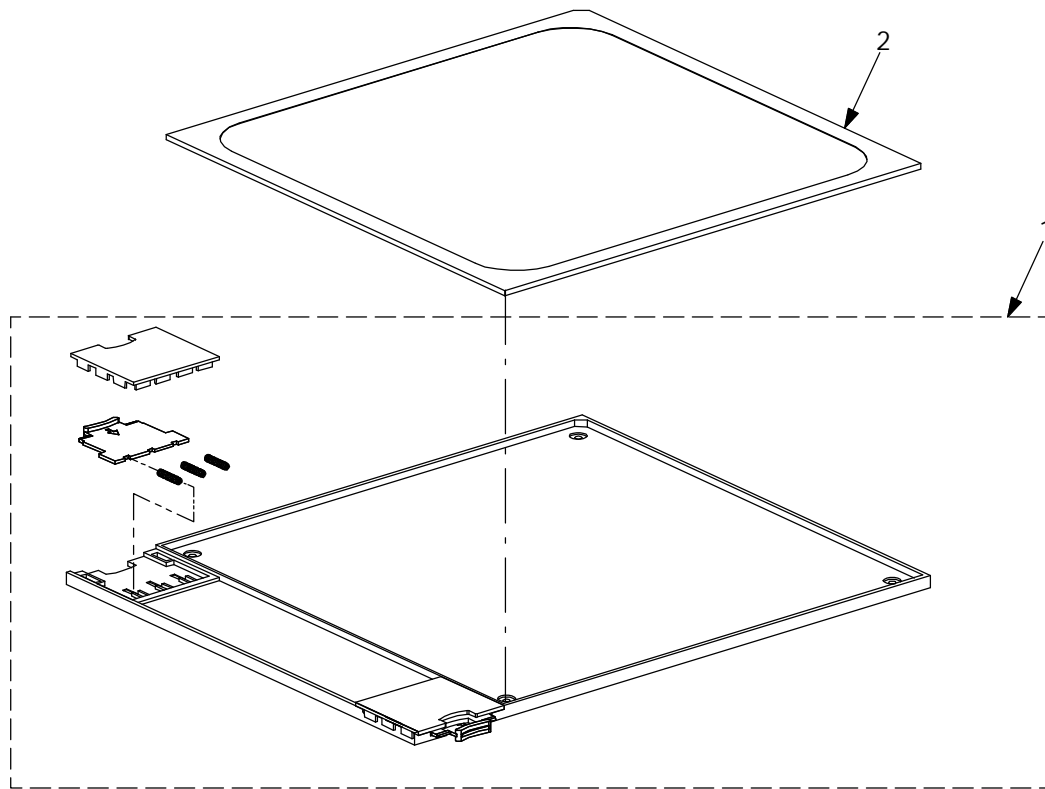


NOTE: Screws, Nuts, Bolts, Clips, and etc. are contained in Hardware Kit **78-8062-1150-0**.

**Section 13
RESISTOR KIT**

Item No.	Part Number	Description	Qty
1	78-8057-4293-5	RESISTOR KIT (All except for AAB, AAD, AADM, AAM)	1
2	78-8011-1198-6	RESISTOR, 1.2 OHM, .187 TAB (AAB, AAD, AADM, AAM)	1

Section 14
STAGE COVER ASSEMBLY-DOMESTIC SPARE PART KIT



NOTE: Screws, Nuts, Bolts, Clips, and etc. are contained in Hardware Kit **78-8062-1150-0**.

Section 14
STAGE COVER ASSEMBLY-DOMESTIC SPARE PART KIT

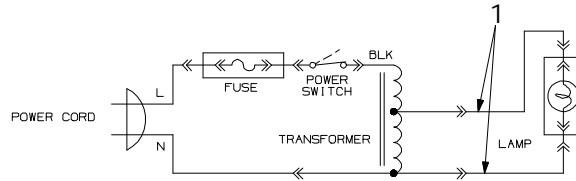
Item No.	Part Number	Description	Qty
1	78-8057-4282-8	STAGE COVER ASSEMBLY-Domestic Spare Part Kit	1
2A	78-8014-7442-6	FRESNEL LENS, Reflective, 10.5 S, 187.1mm, FL	1
2B	78-8014-6798-2	FRESNEL LENS, Reflective, 10.5 T, 187.1mm, FL	1
2C	78-8014-7443-4	FRESNEL LENS, Reflective, A4 S, 187.1mm, FL (For Japanese models also)	1
2D	78-8014-6799-0	FRESNEL LENS, Reflective, A4 T, 187.1mm, FL	1
2F	78-8065-8588-7	FRESNEL LENS, Reflective, A4, 187.1mm, FL, Japan	1

Section 15
WIRE JUMPERS

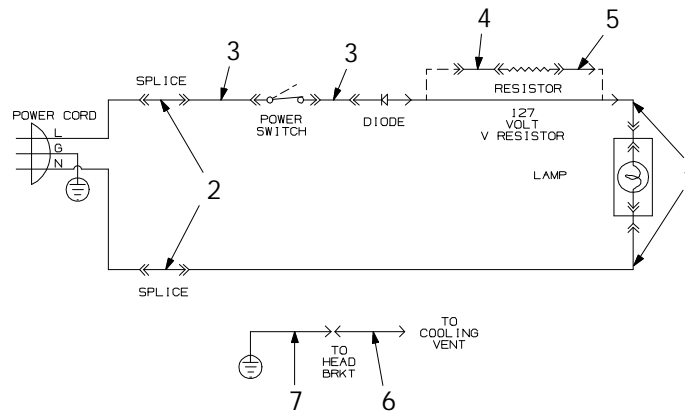
I

EVW - Japan

To Parts List

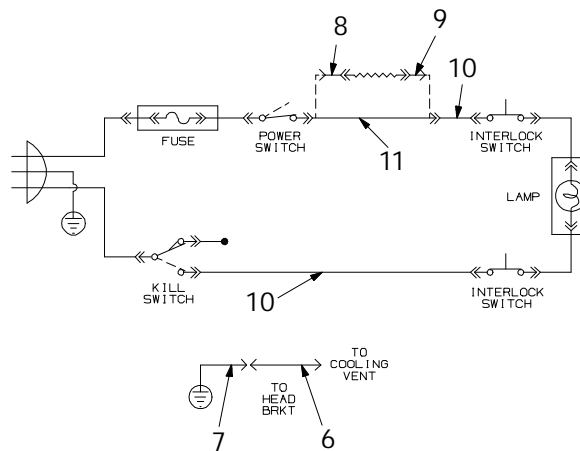


EVW



To Appendix

FSX/FSY



Section 15
WIRE JUMPERS

Item No.	Part Number	Description	Qty
1	78-8044-6810-2	LEAD ASSEMBLY, Post	1
2	26-1003-7267-6	SPLICE, Line, Insulated	2
3	78-8057-4088-9	SWITCH LEAD ASSEMBLY	1
4	78-8057-4202-6	LEAD ASSEMBLY, Resistor To Power Cord	1
5	78-8057-4201-8	LEAD ASSEMBLY, Resistor To Power Cord	1
6	78-8065-8232-2	WIRE, Ground	1
7	78-8044-6805-2	LEAD ASSEMBLY, Ground	1
8	78-8057-4267-9	LEAD ASSEMBLY, Resistor To On/Off Switch	1
9	78-8057-4266-1	LEAD ASSEMBLY, Resistor To Post Lead	1
10	78-8057-4243-0	LEAD ASSEMBLY, Post	1
11	78-8057-4187-9	LEAD ASSEMBLY, Switch	1

This page intentionally left blank

Appendix A SPECIFICATIONS

Model Description	Country	Power Cord	Model Alpha	Stock Number	Voltage	Agency	Stage Size	Head Type	Lampchanger	Color Tuning	Post Type	Lamp Type	Handle	Lamp Control	Lamps Installed	Fresnel	Power	Fuse	Cord Storage
M2000 Overhead Projector		Australian	2000 AHA	78-9236-3732-2	240V 50 Hz	SAA	A4	Open Singlet	No	None	Folding	FSY	Yes	None	1	2000 RF A4	Line	2.5	Yes
M2000 Overhead Projector		Australian	2000 AHAT	78-9236-3737-1	240V 50 Hz	SAA	A4	Open Triplet	No	None	Folding	FSY	Yes	None	1	2000 RF A4	Line	2.5	Yes
M2000 Overhead Projector		Australian	2000 AHNT	78-9236-3739-7	240V 50 Hz		A4	Open Triplet	No	None	Folding	FSY	Yes	None	1	2000 RF A4	Line	2.5	Yes
M2000 Overhead Projector		Australian	2000 AHNV	78-9236-3927-8	240V 50 Hz		A4	Open Singlet	No	None	Folding	FSY	Yes	None	1	2000 RF A4	Line	2.5	Yes
M2000 Overhead Projector		European	2000 AHST	78-9236-3928-6	230V 50 Hz	European	A4	Open Triplet	No	None	Folding	FSX	Yes	None	1	2000 RF A4	Line	2.5	Yes
M2000 Overhead Projector		European	2000 AHSV	78-9236-3929-4	230V 50 Hz	European	A4	Open Singlet	No	None	Folding	FSX	Yes	None	1	2000 RF A4	Line	2.5	Yes
M2000 Overhead Projector		Italian	2000 AHSC	78-9236-3930-2	230V 50 Hz		A4	Open Singlet	No	None	Folding	FSX	Yes	None	1	2000 RF A4	Line	2.5	Yes
M2000 Overhead Projector		Japan	2000 AAT	78-9236-3931-0	120V 60 Hz		10.5	Open Singlet	No	None	Folding	FSY	Yes	None	1	2000 RF A4	Line	3.0	Yes
M2000 Overhead Projector		Japan	2000 ABJ	78-9236-3932-8	100V 50/60 Hz	MITI	A4	Open Singlet	No	None	Folding	EVW	Yes	None	1	2000 RF A4	Line	3.0	Yes
M2000 Overhead Projector		Japan	2000 ABJT	78-9236-3973-2	100V 50/60 Hz	MITI	A4	Open Triplet	No	None	Folding	EVW	Yes	None	1	2000 RF A4	Line	3.0	Yes
M2000 Overhead Projector		South Africa	2000 AHR	78-9236-3975-7	240V 50 Hz	SABS	A4	Open Singlet	No	None	Folding	FSY	Yes	None	1	2000 RF A4	Line	2.5	Yes
M2000 Overhead Projector		Swiss	2000 AHZT	78-9236-4008-6	230V 50 Hz	SEV	A4	Open Triplet	No	None	Folding	FSX	Yes	None	1	2000 RF A4	Line	2.5	Yes
M2000 Overhead Projector		United Kingdom	2000 AHUT	78-9236-4034-2	240V 50 Hz	European	A4	Open Triplet	No	None	Folding	FSY	Yes	None	1	2000 RF A4	Line	2.5	Yes
M2000 Overhead Projector		United Kingdom	2000 AHUU	78-9236-4035-9	240V 50 Hz	European	A4	Open Singlet	No	None	Folding	FSY	Yes	None	1	2000 RF A4	Line	2.5	Yes
M2000 Overhead Projector		United States	2000 AHUV	78-9236-5391-5	240V 50 Hz	European	A4	Open Singlet	No	None	Folding	FSY	Yes	None	1	2000 RF A4	Line	2.5	Yes
M2000 Overhead Projector		United States	2000 AAD	78-9236-5485-5	127V 60 Hz		10.5	Open Triplet	No	None	Folding	EVW	Yes	None	1	2000 RF 10.5	Diode	3.0	Yes
M2000 Overhead Projector		United States	2000 AAM	78-9236-5827-8	127V 60 Hz		10.5	Open Singlet	No	None	Folding	EVW	Yes	None	1	2000 RF 10.5	Diode	None	Yes
M2000 Overhead Projector		United States	2000 AG	78-9236-6015-9	120V 60 Hz	UL/CSA	10.5	Open Singlet	No	None	Folding	EVW	Yes	None	1	2000 RF 10.5	Diode	3.0	Yes
M2000 Overhead Projector		United States	2000 AAB	78-9236-6174-4	127V 60Hz	UL/CSA	10.5	Open Singlet	No	None	Folding	EVW	Yes	None	1	2000 RF	Diode	None	Yes
M2000 Overhead Projector		United States	2000 AADM	78-9236-6175-1	127V 60Hz	UL/CSA	10.5	Open Singlet	No	None	Folding	EVW	Yes	None	1	2000 RF	Diode	None	Yes
M2000 Overhead Projector		European	2000 BHQS	78-9236-6224-7	24VDC 50Hz 220VAC	UL/CSA	A4	Open Singlet	No	None	Folding	EWV	Yes	None	1	2000 RF A4	Transformer	5.0	Yes
M2000 Overhead Projector		United States	2000 AK	78-9236-6228-8	120V 60Hz	UL/CSA	10.5	Closed Singlet	No	None	Folding	EVW	Yes	None	1	2000 RF 10.5	Diode	None	Yes

This page intentionally left blank